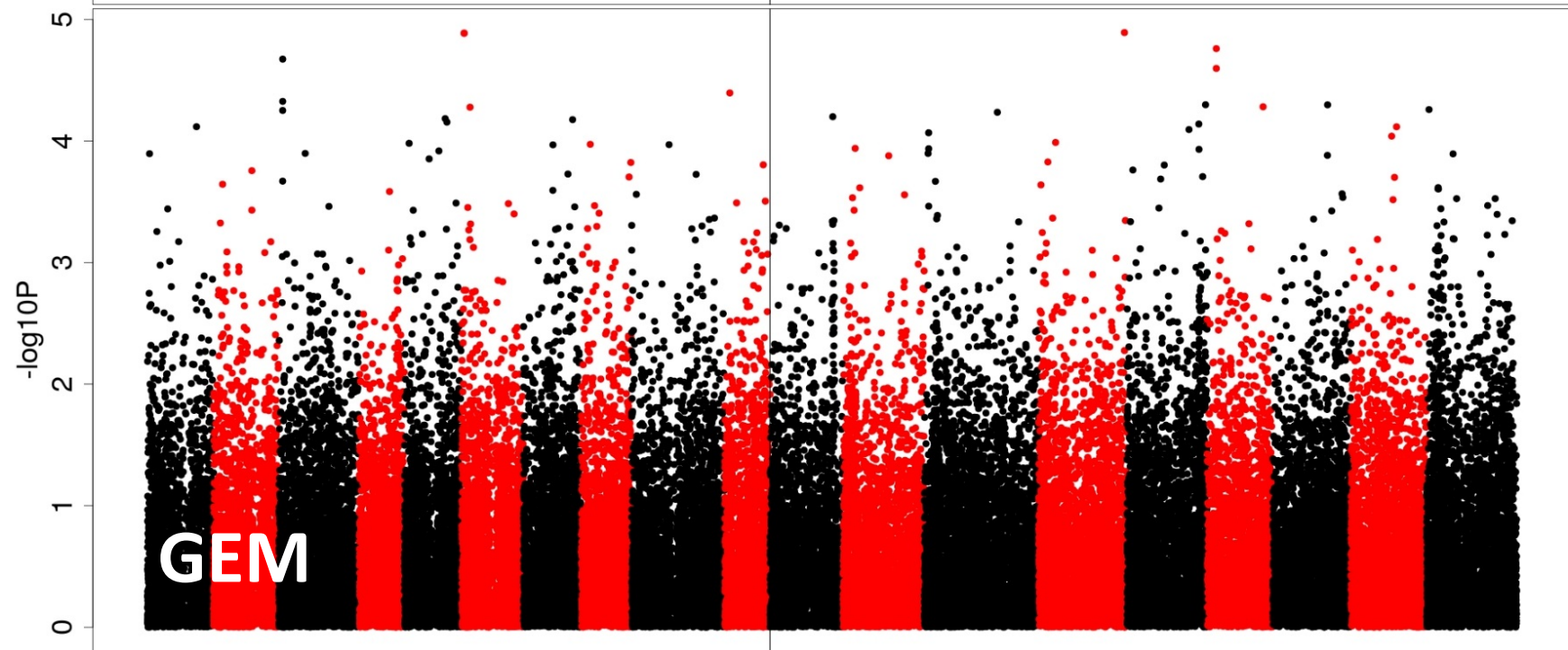
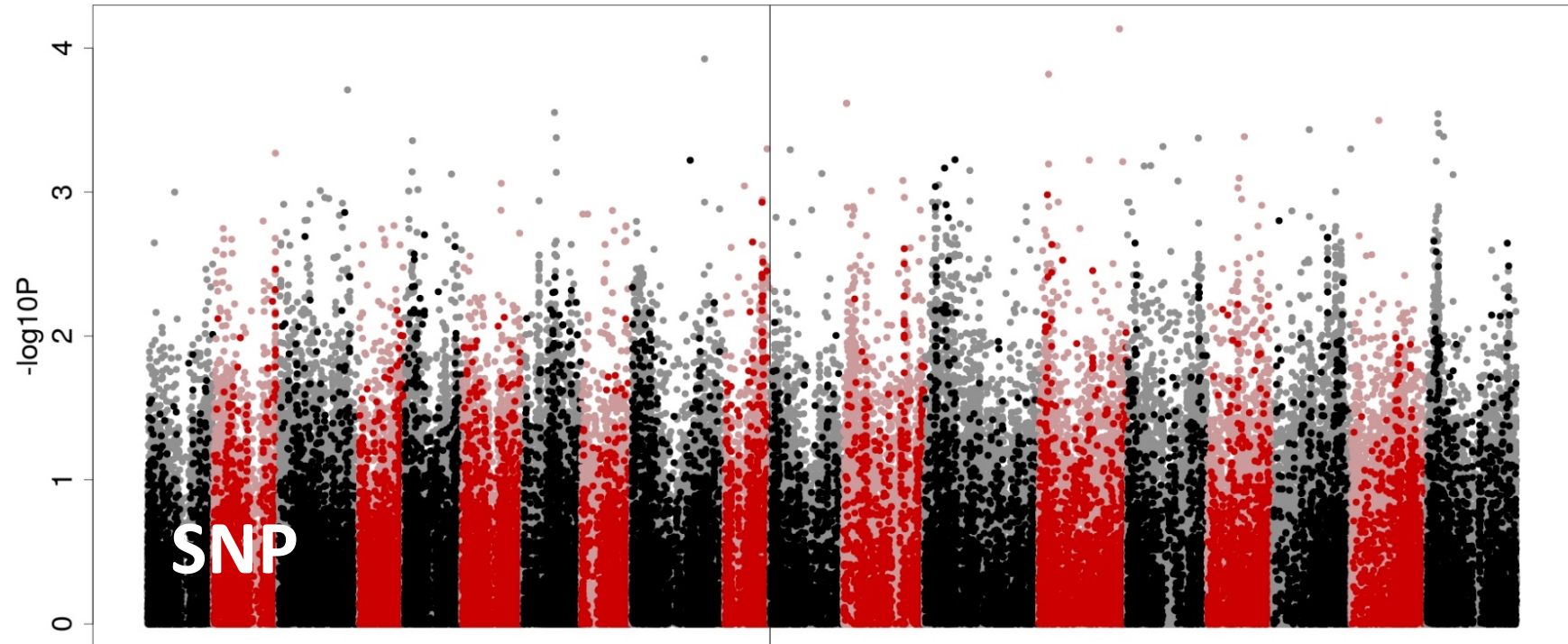


Results of associative genomic/transcriptomic analysis, illustrated by Manhattan plots

Each slide shows the SNP (single nucleotide polymorphisms) and GEM (gene expression markers) for one trait, as well as the number of lines analysed. The notes for each slide contain the file names of the Manhattan plots for SNP and GEM. Slides are ordered as indicated in the “results.slide.no” column of the readme file. Dotted lines on Manhattan plots: purple, 5% FDR (false discovery rate); light blue, Bonferroni-corrected 5% FDR.

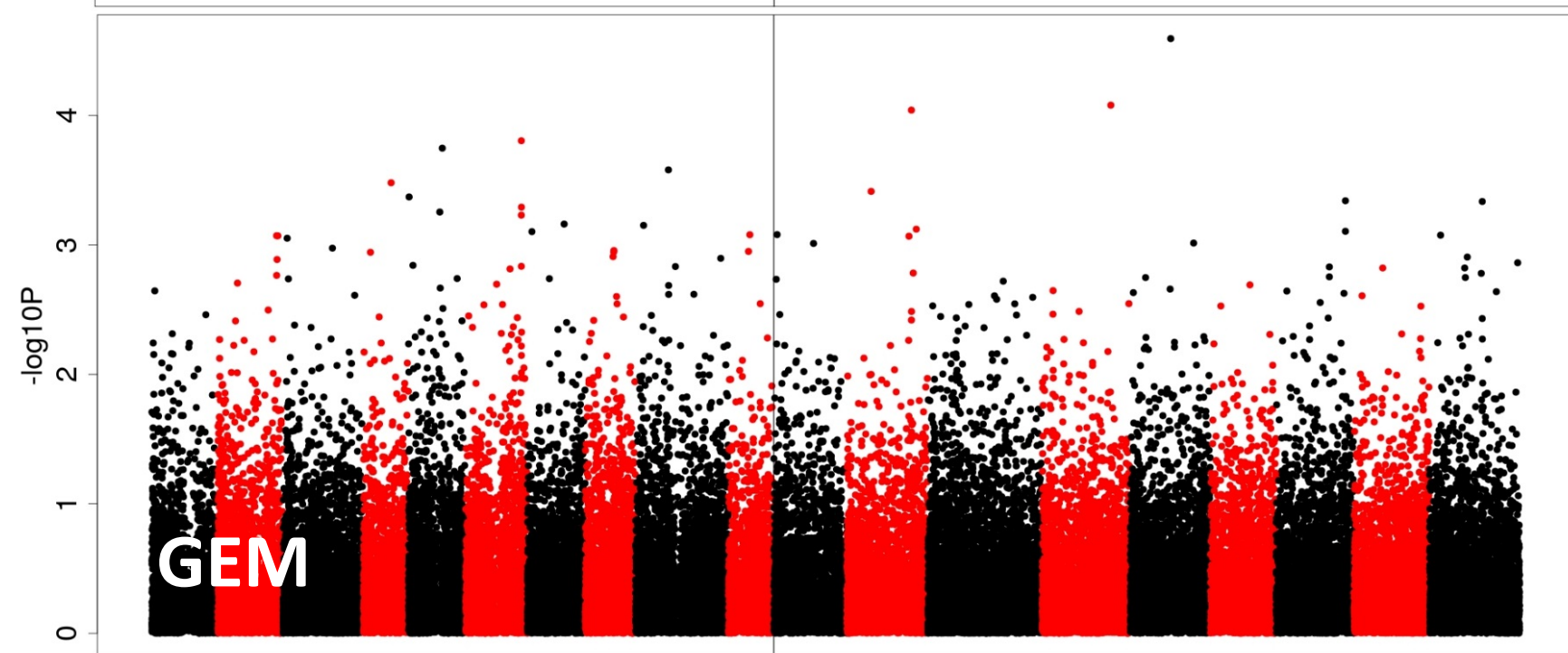
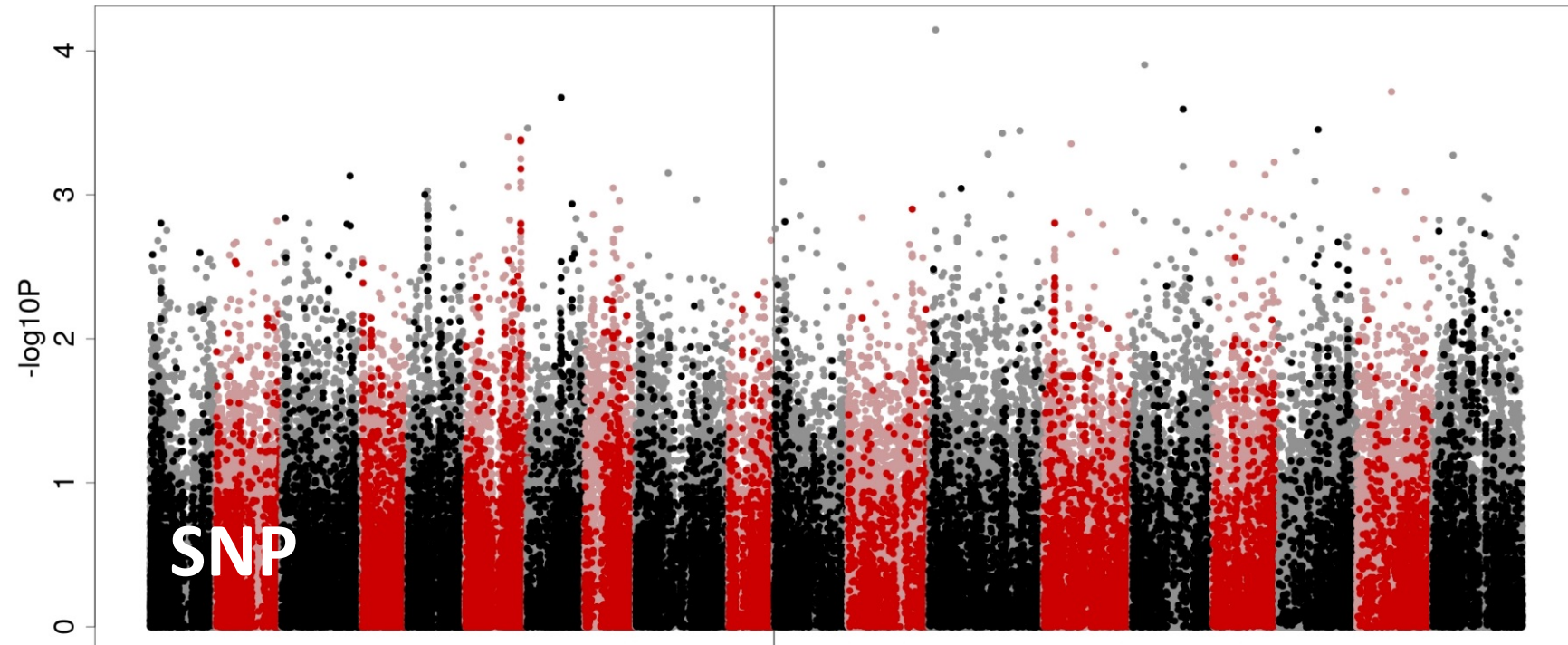
LLS % (Hinxtton 2016)

66 lines analysed



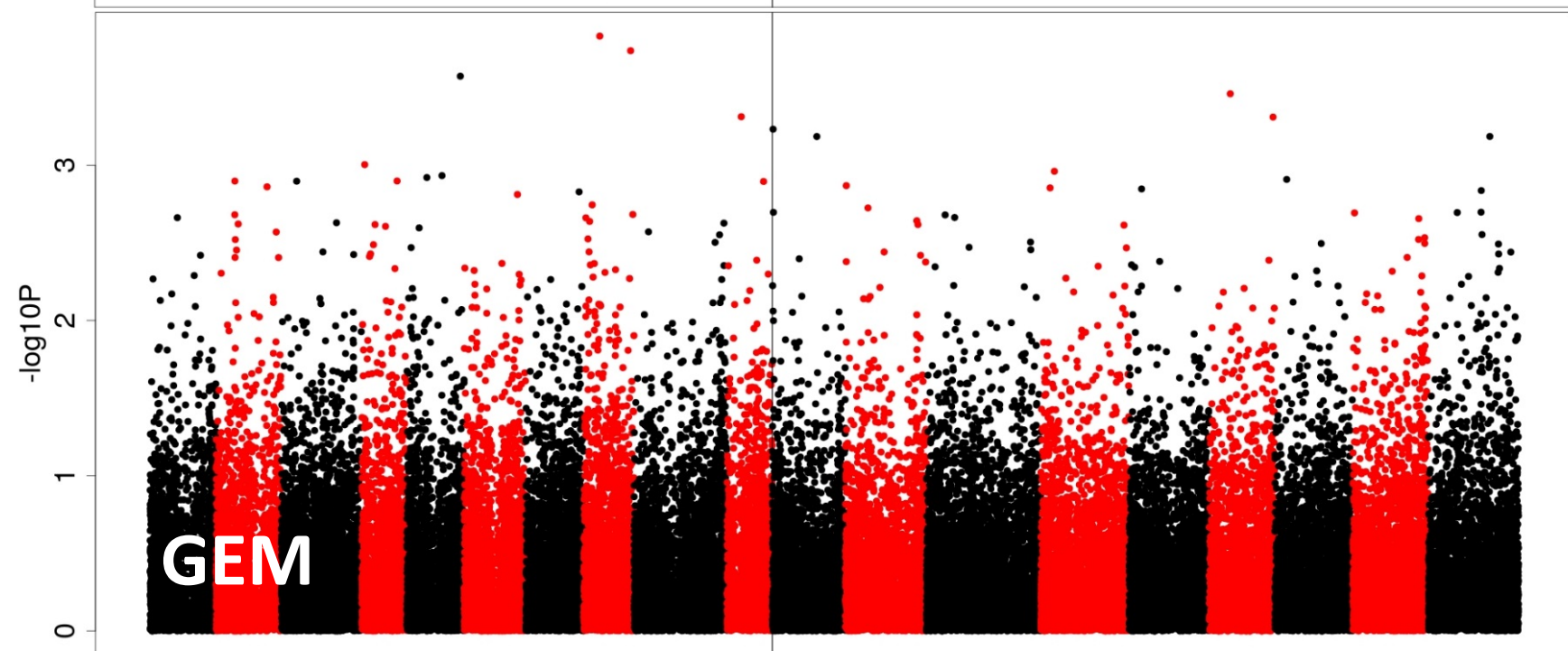
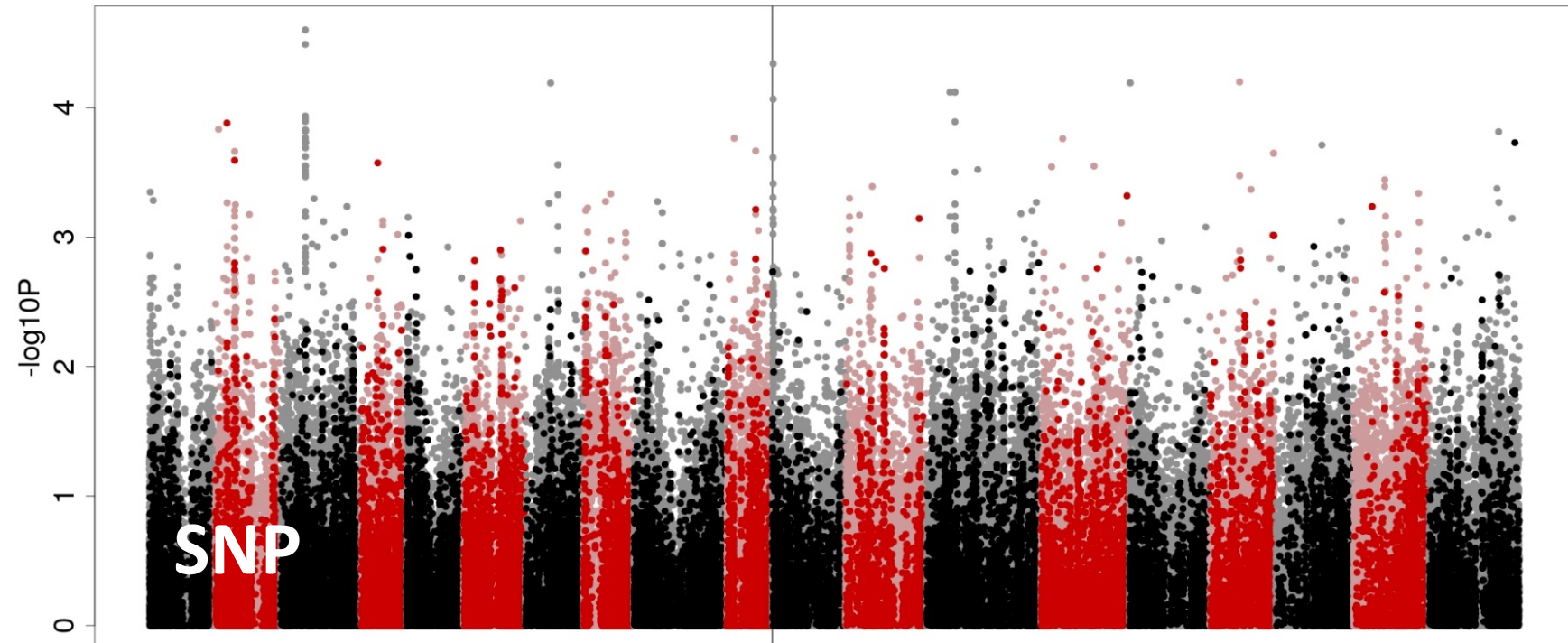
Phoma score 0-7 (Hinxton 2016)

77 lines analysed



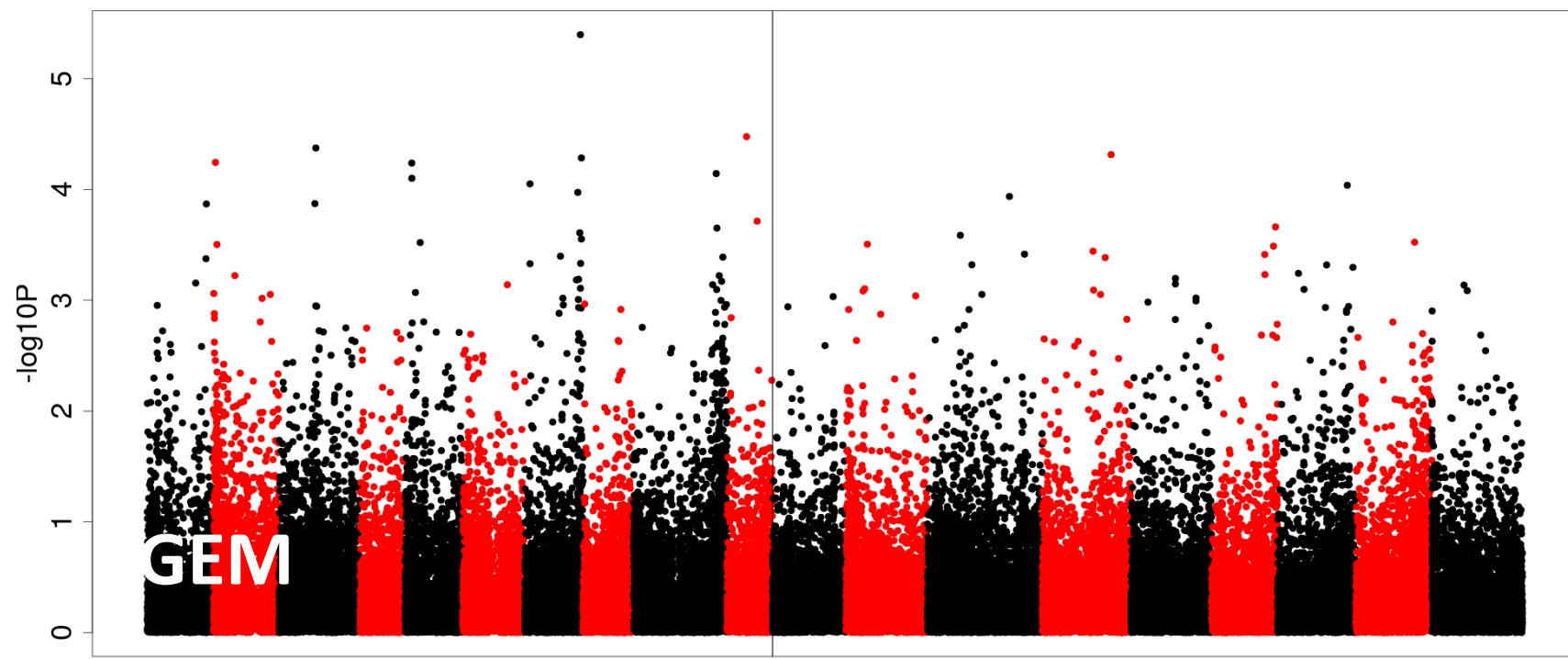
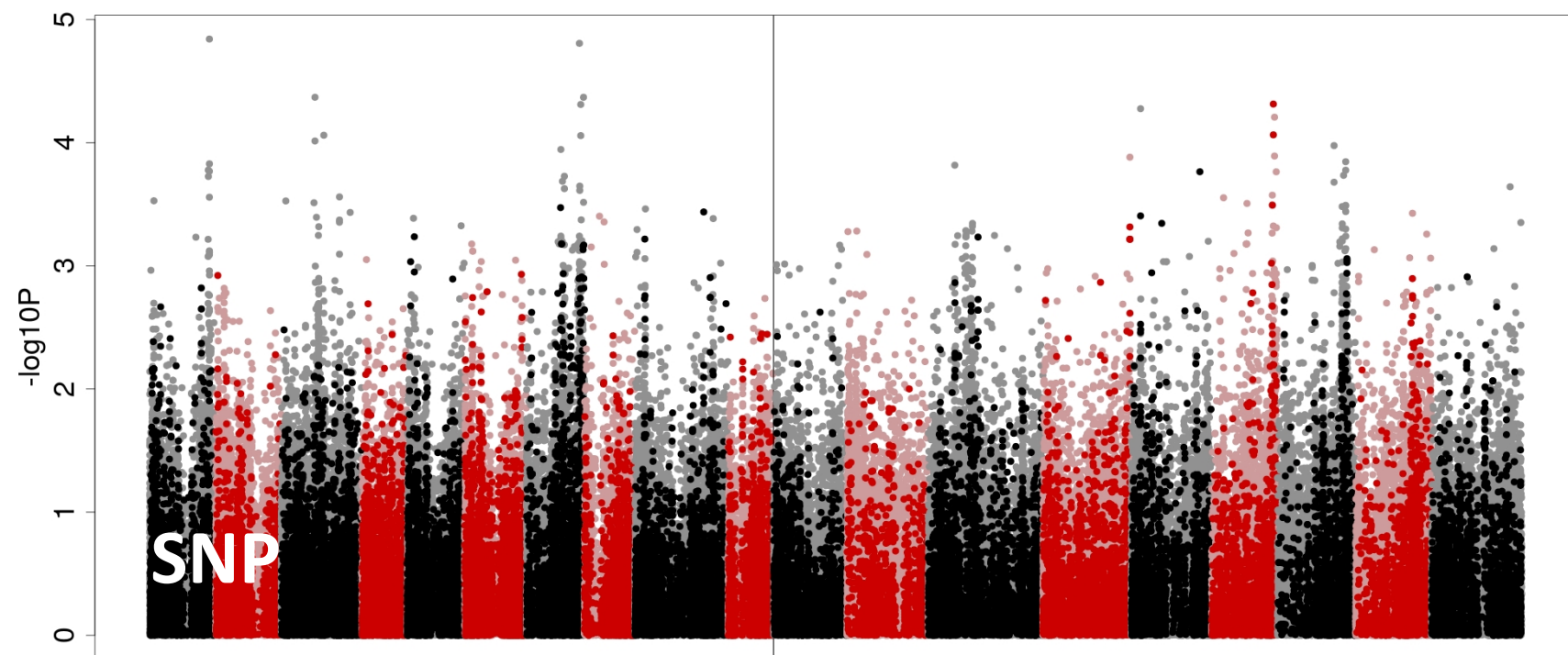
Verticillium (Hinxton 2016)

74 lines analysed



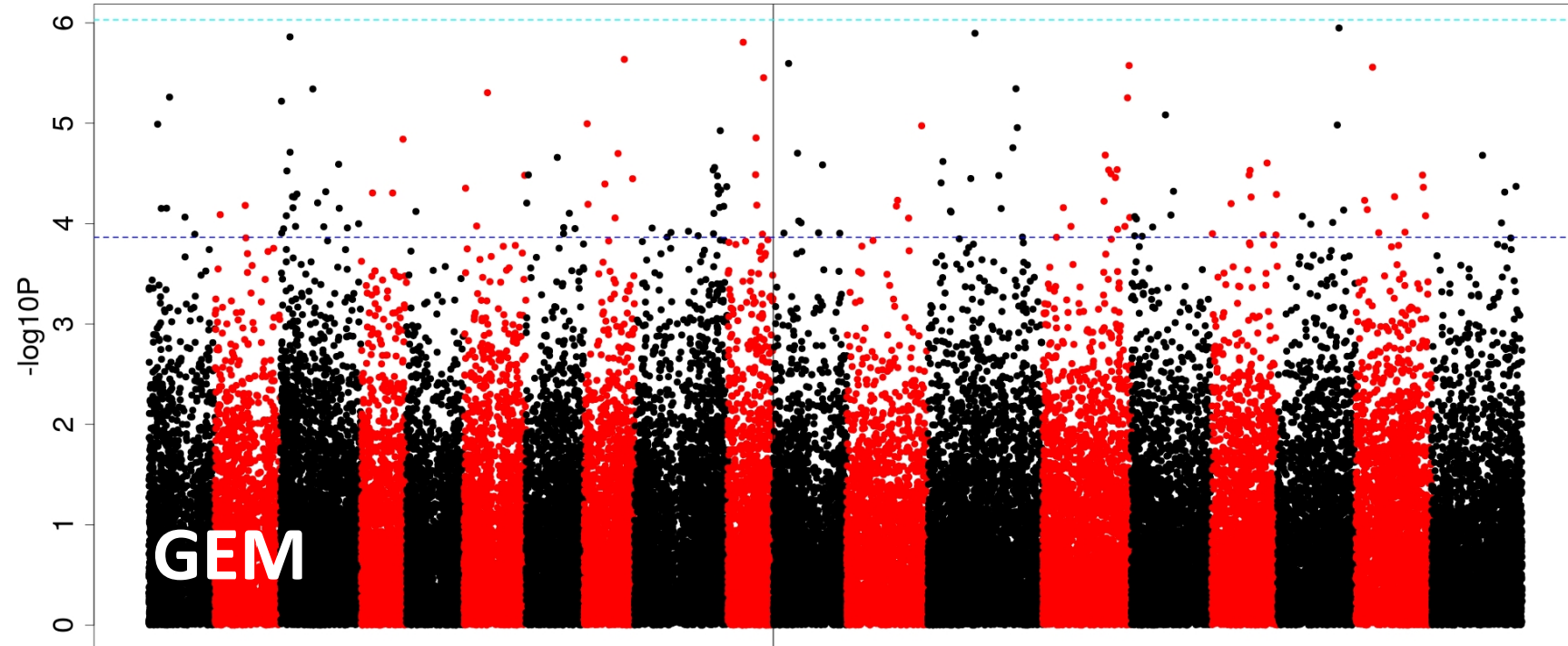
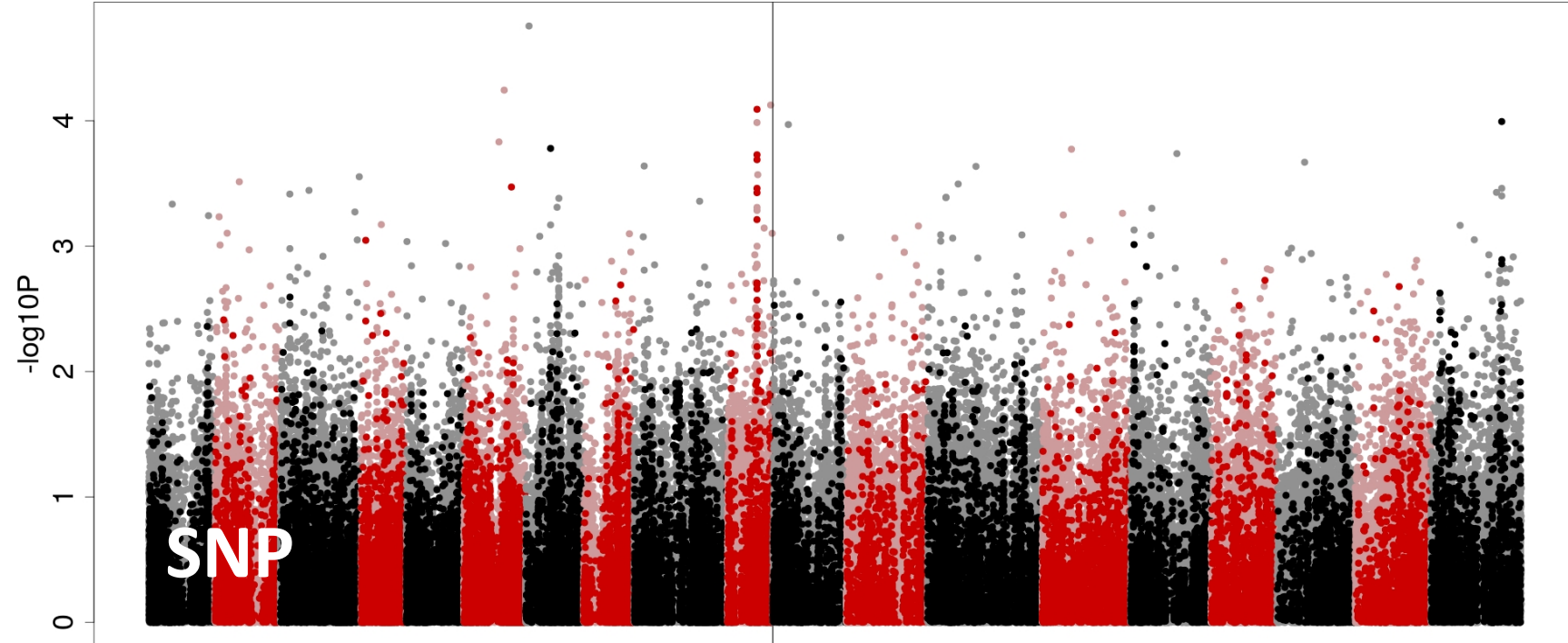
No. of plants with Phoma (2015)

158 lines analysed



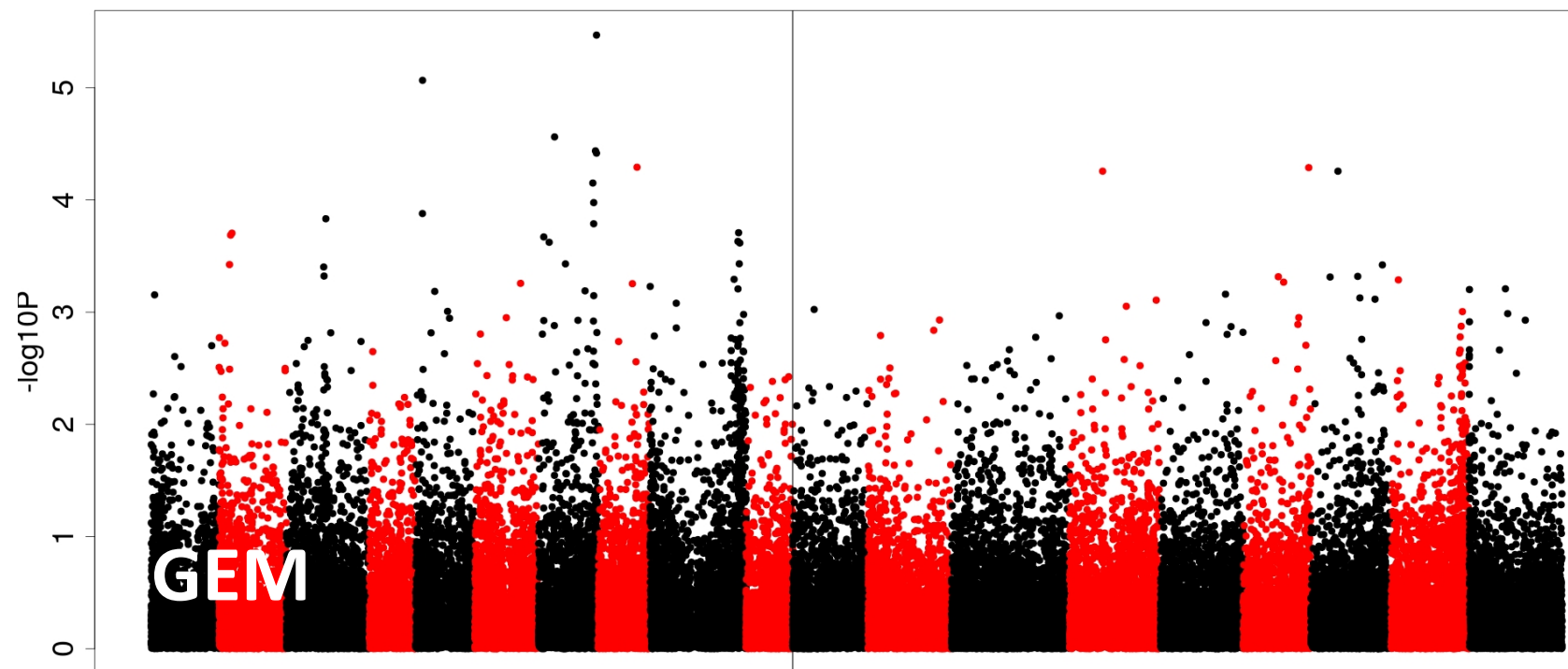
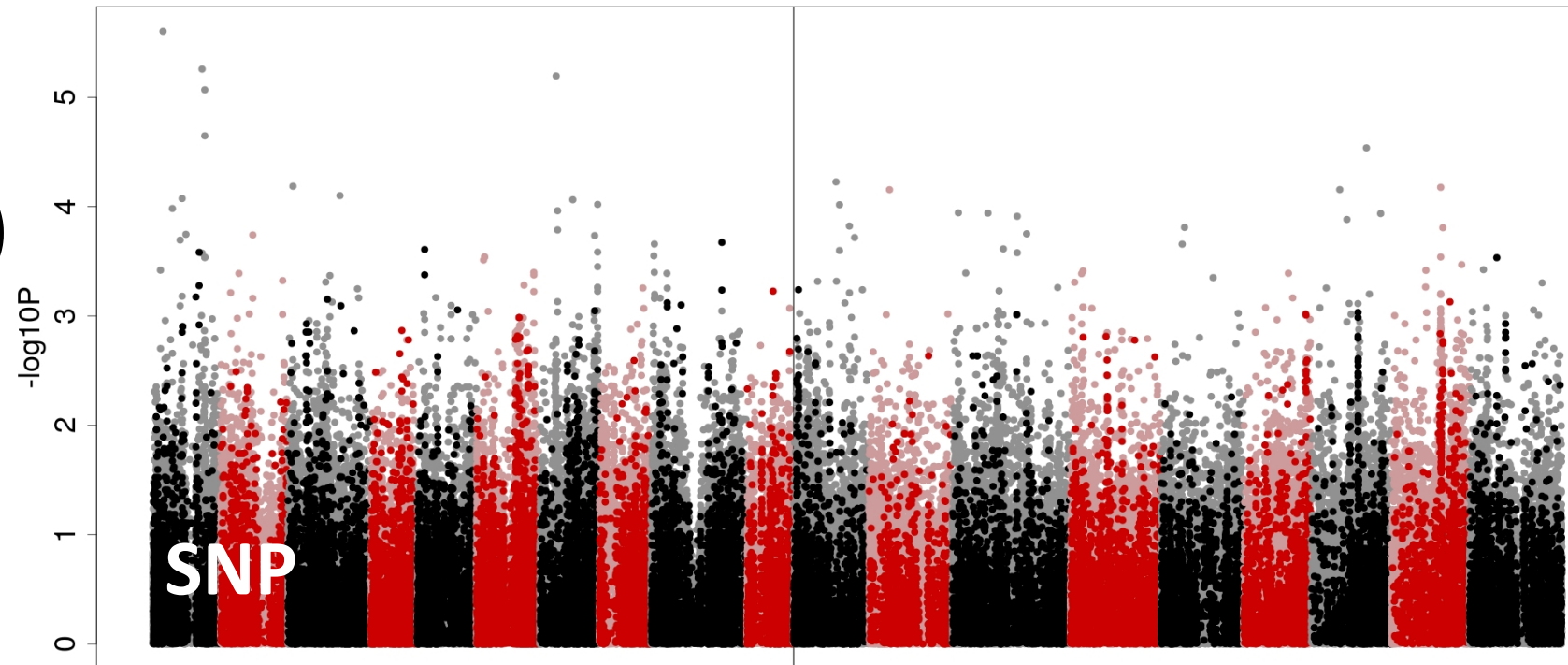
% Cover (2015)

131 lines analysed



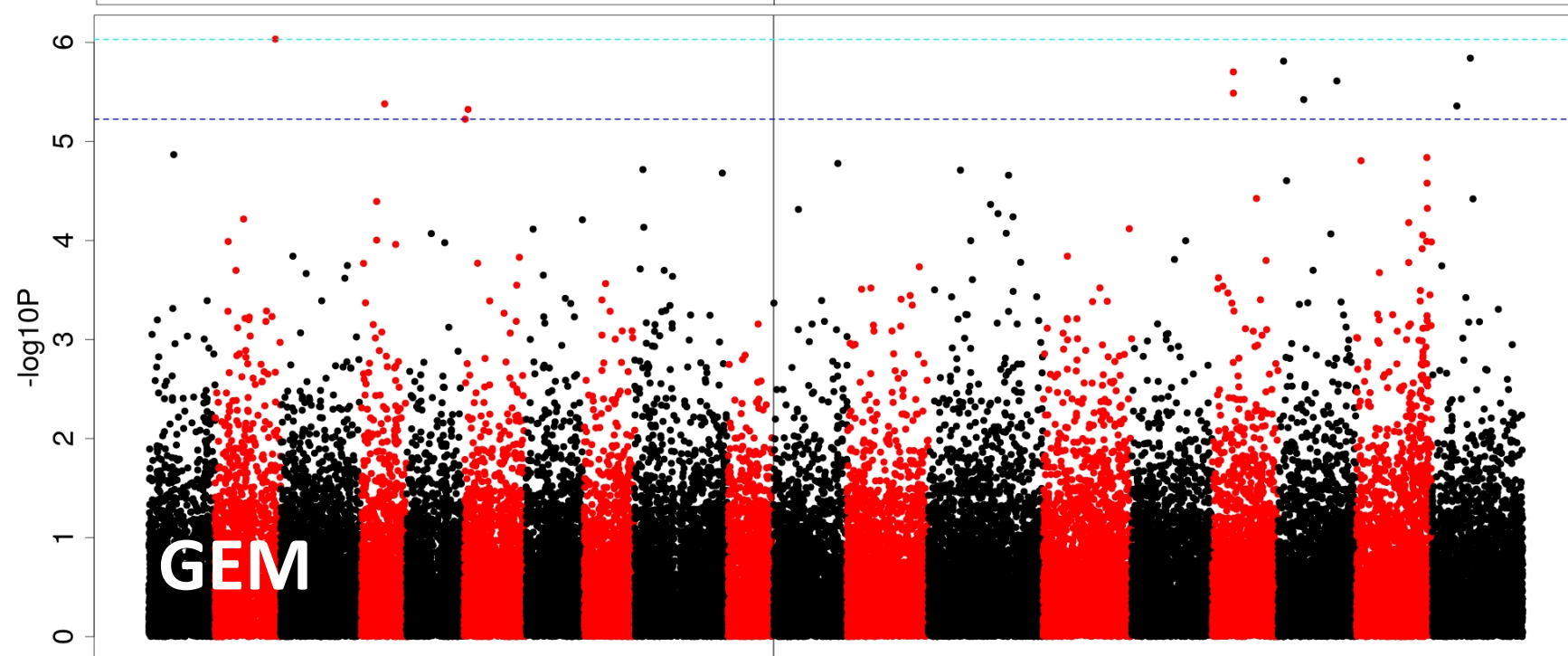
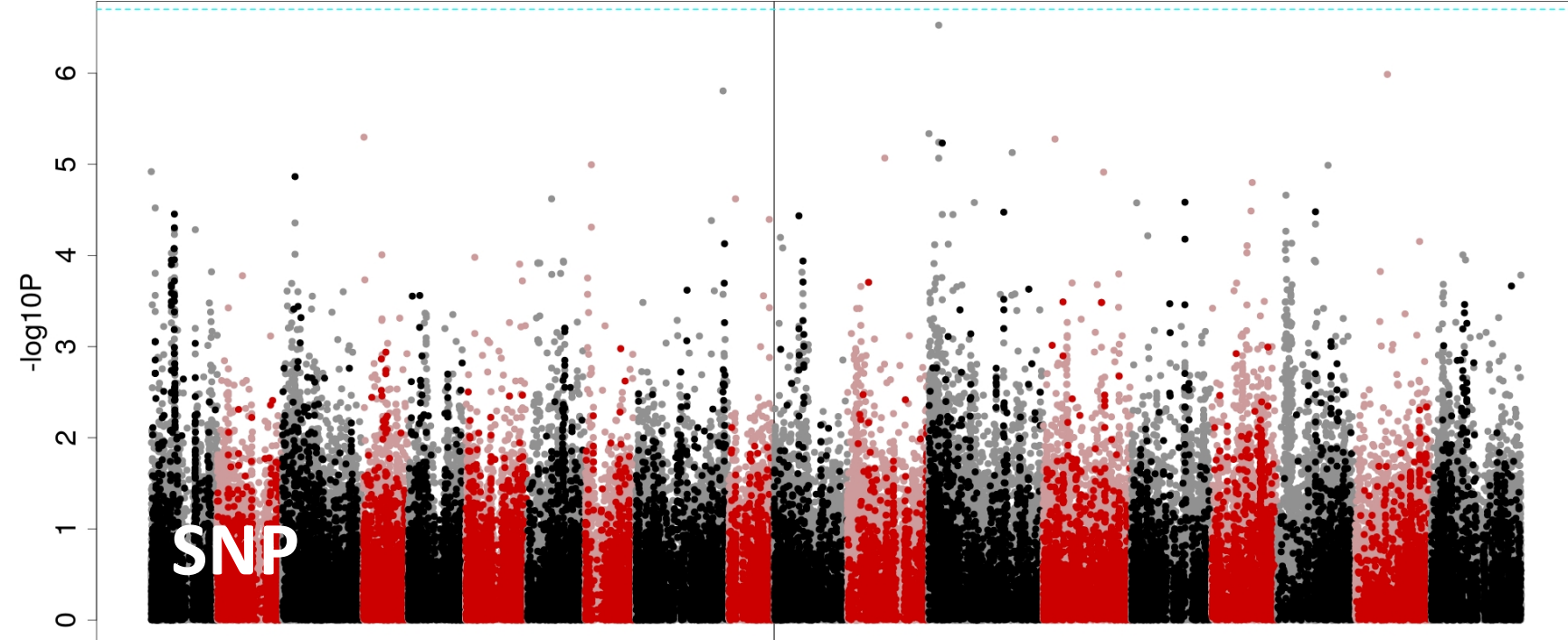
Severity score (2015)

161 lines analysed



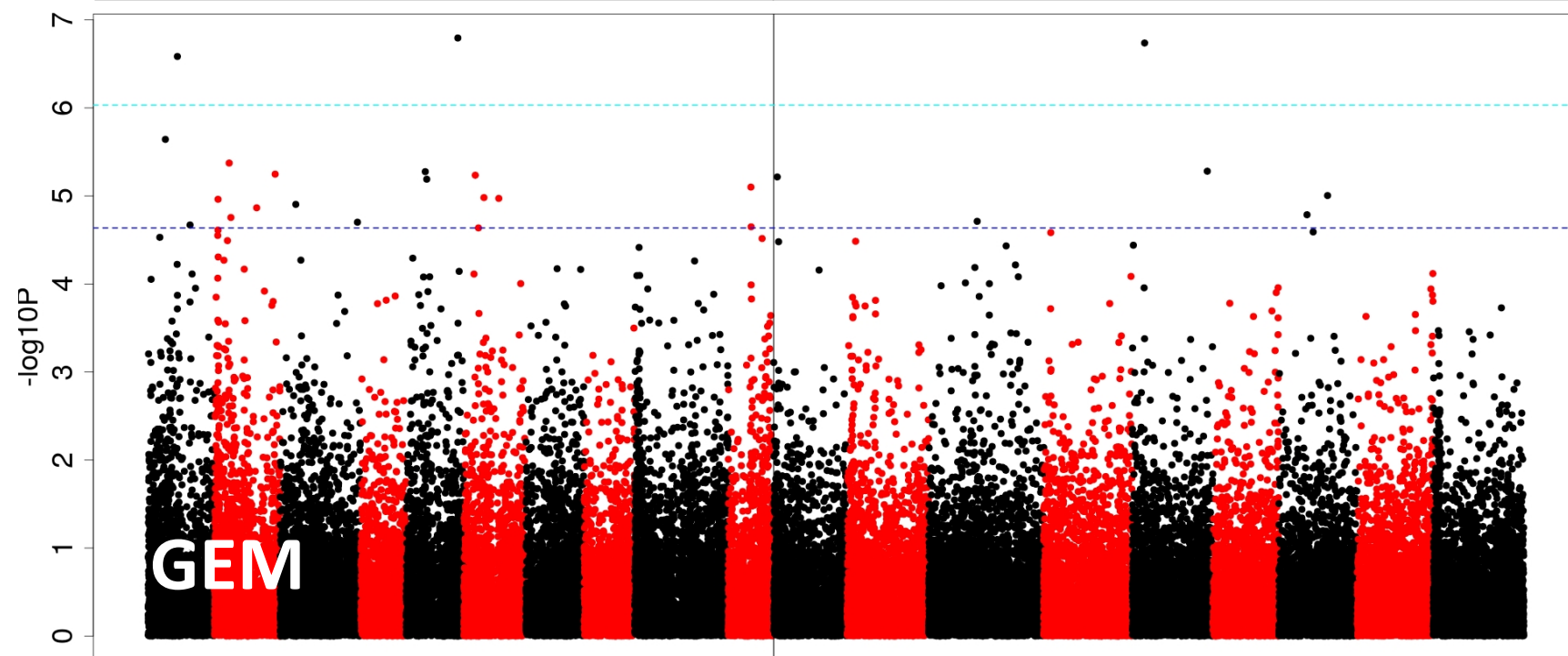
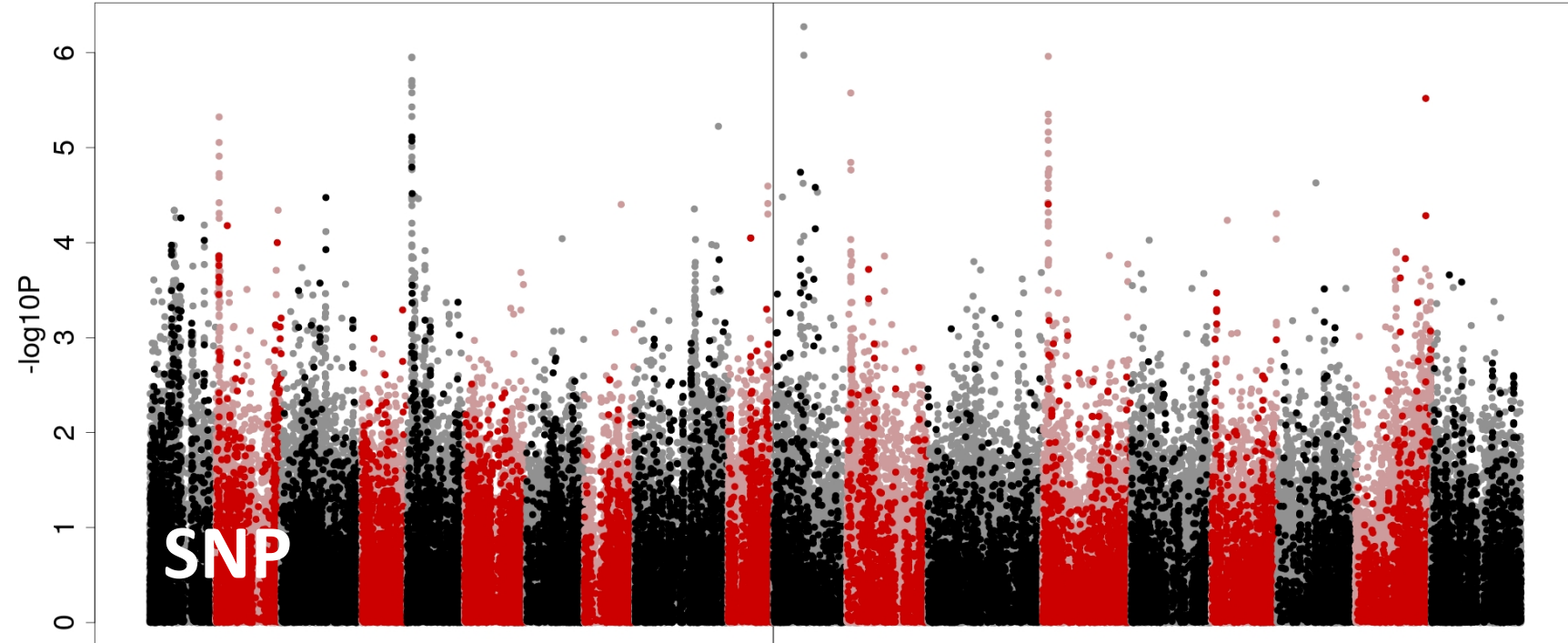
EST (Aberdeen 2016)

240 lines analysed



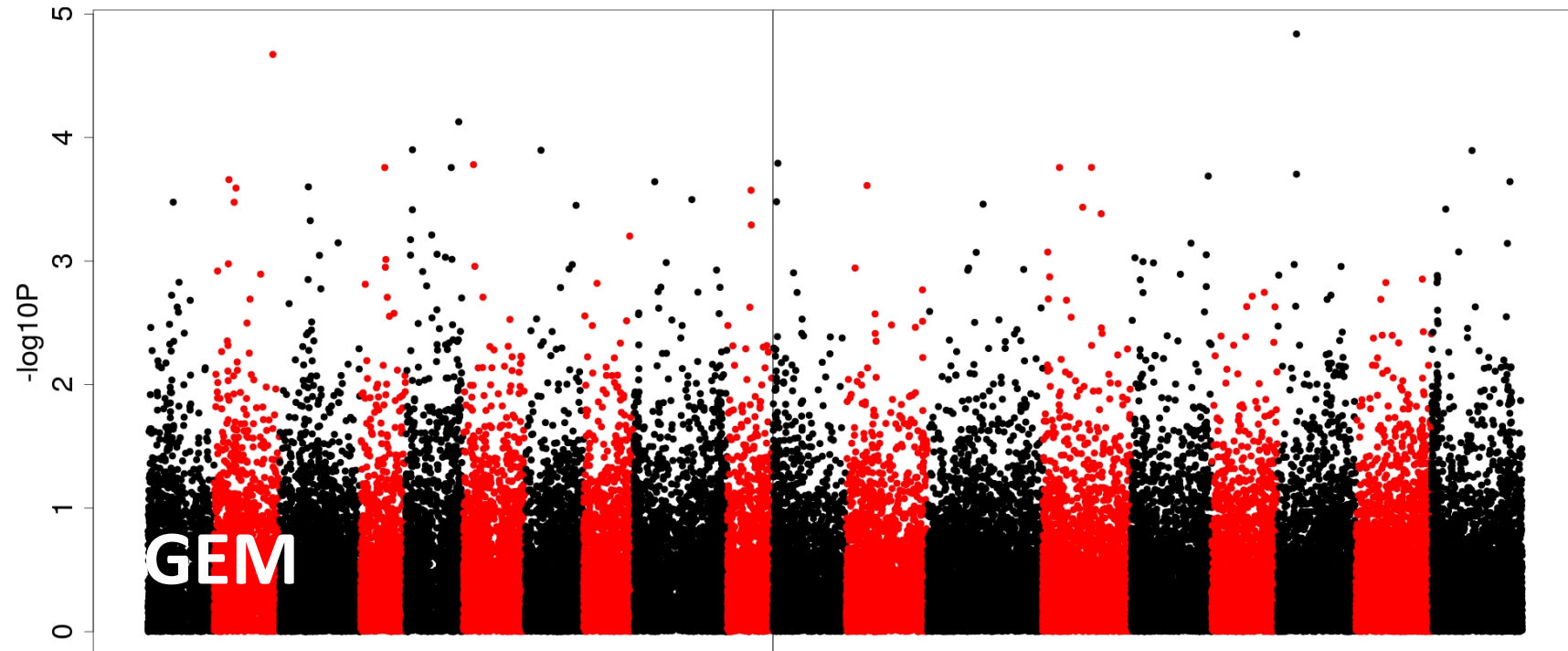
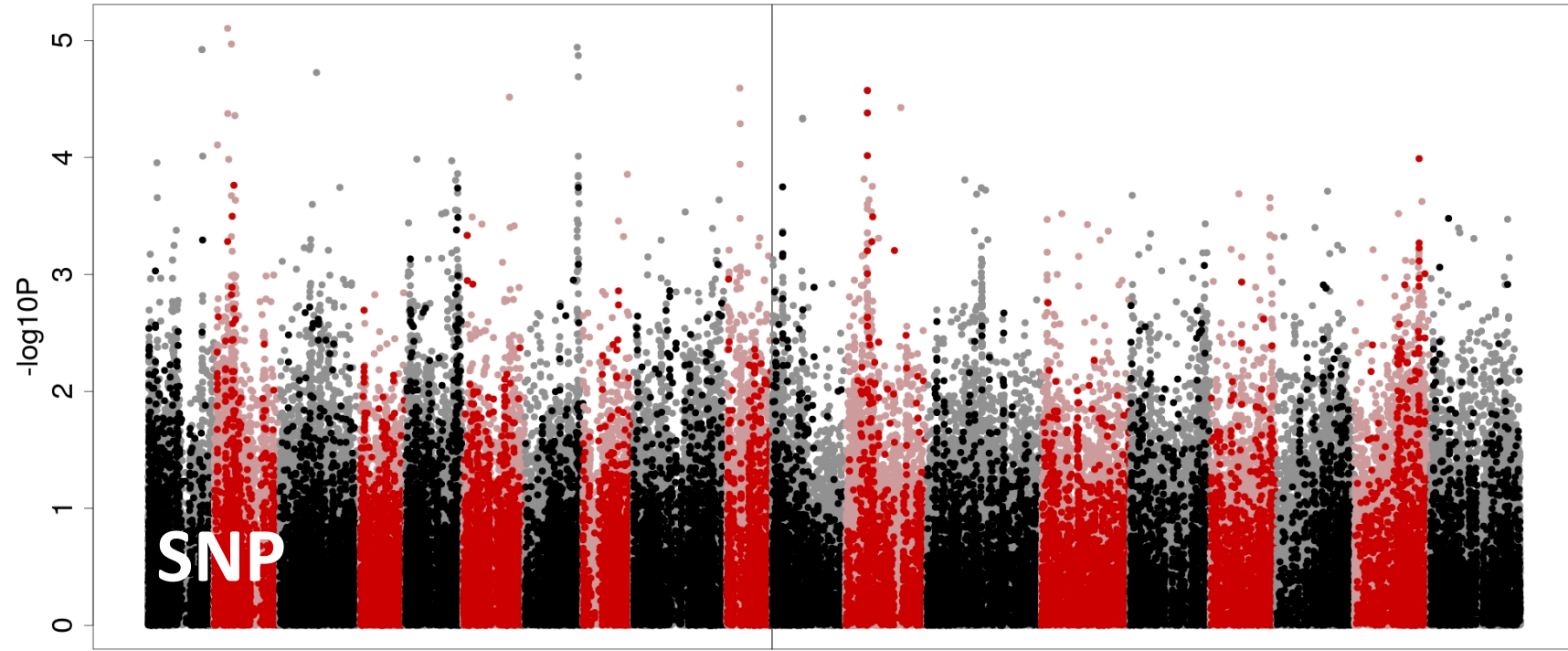
LLS. 1.6 (Aberdeen 2016)

239 lines analysed



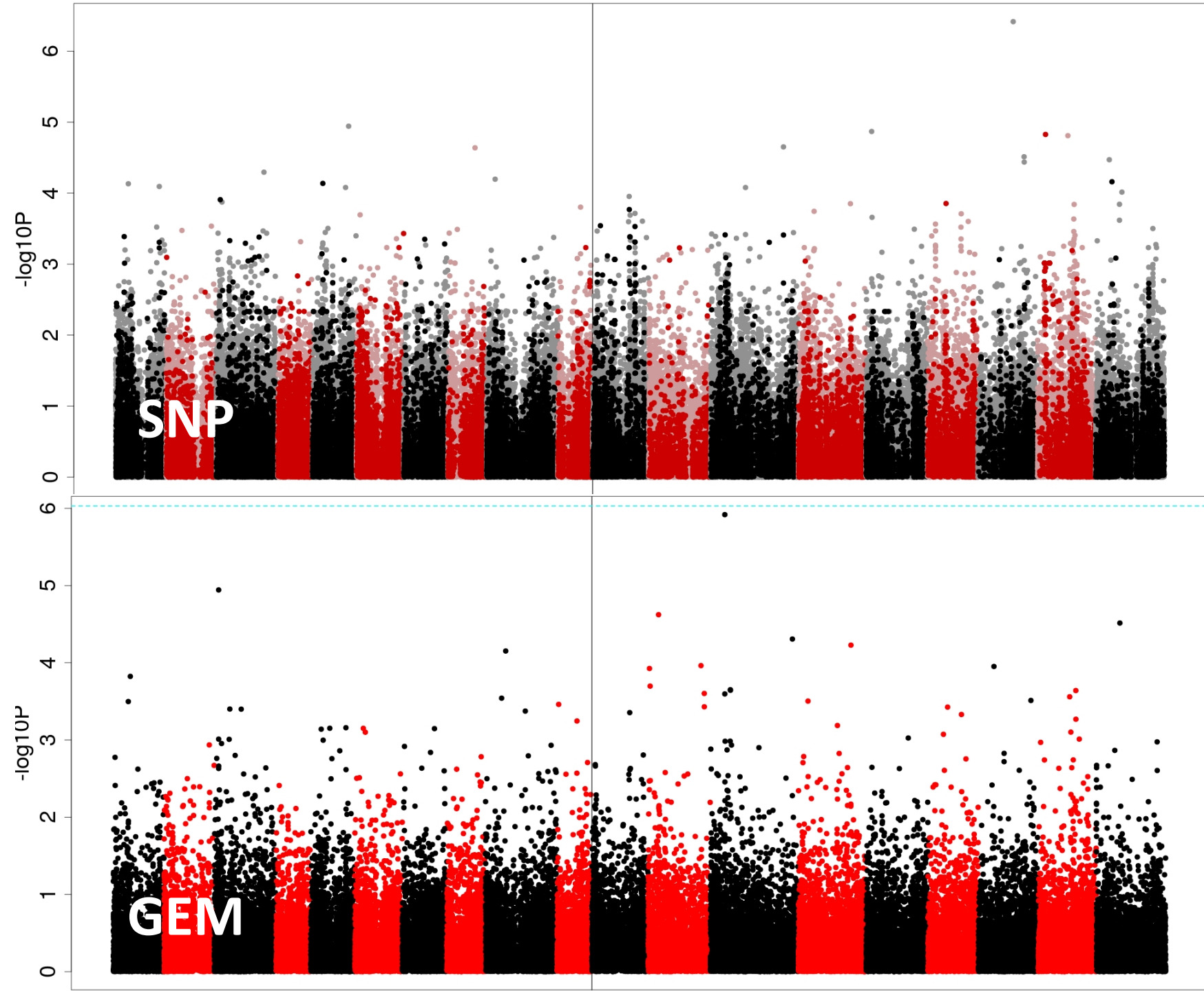
LLS 3.5 (Aberdeen 2016)

238 lines analysed



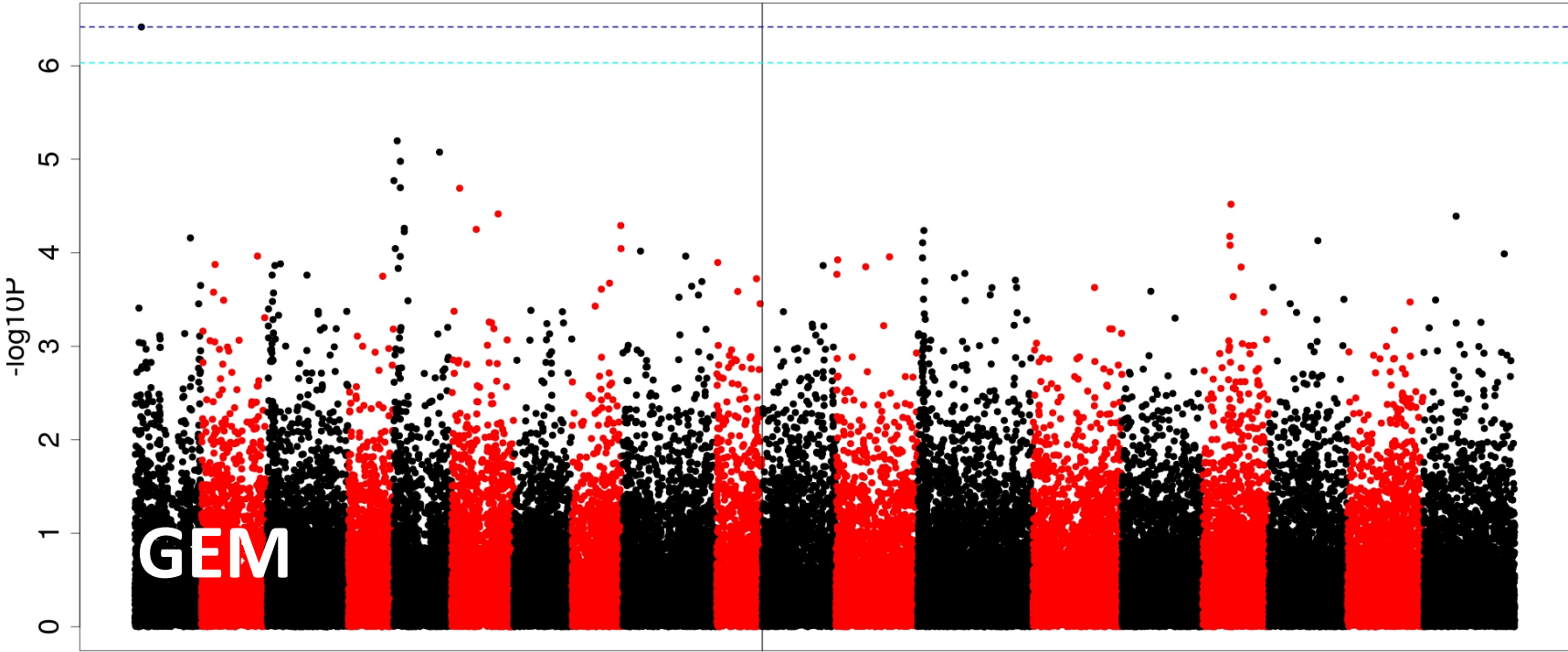
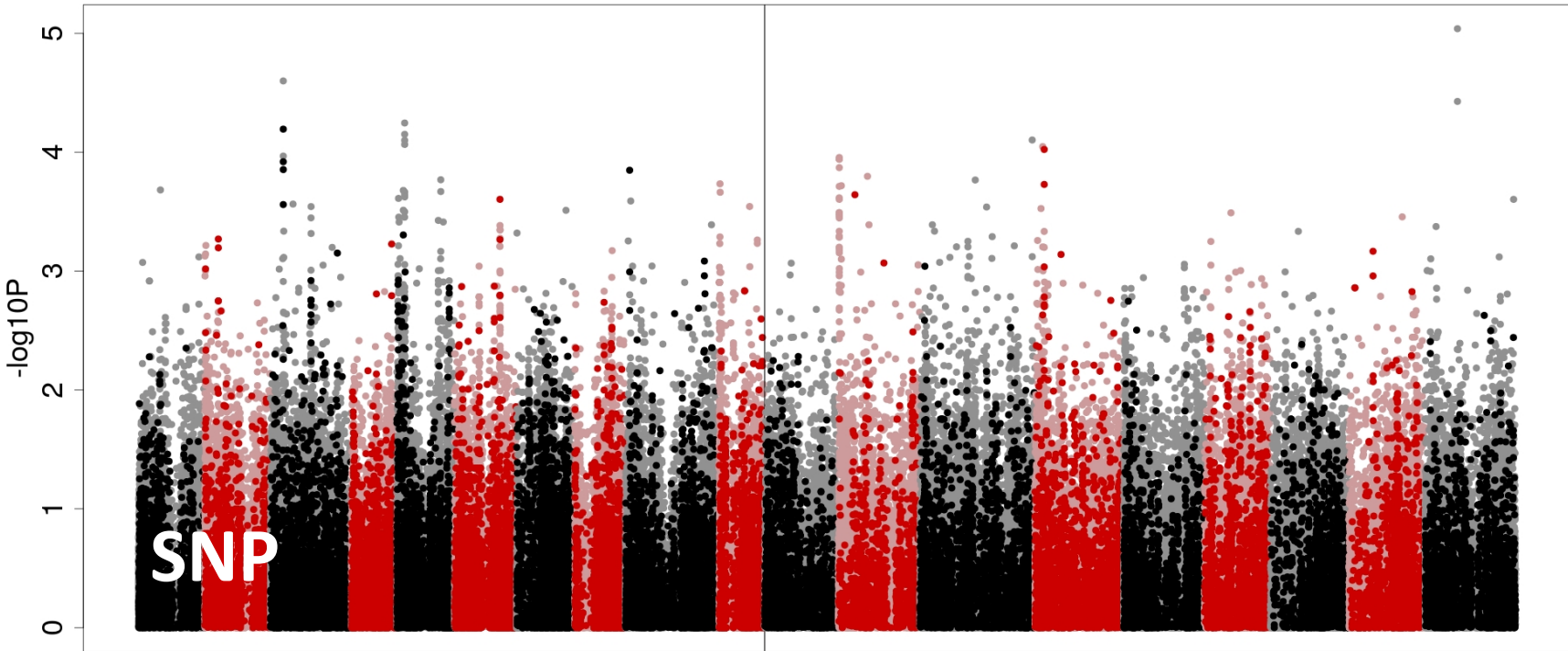
Vigour (Aberdeen 2016)

238 lines analysed



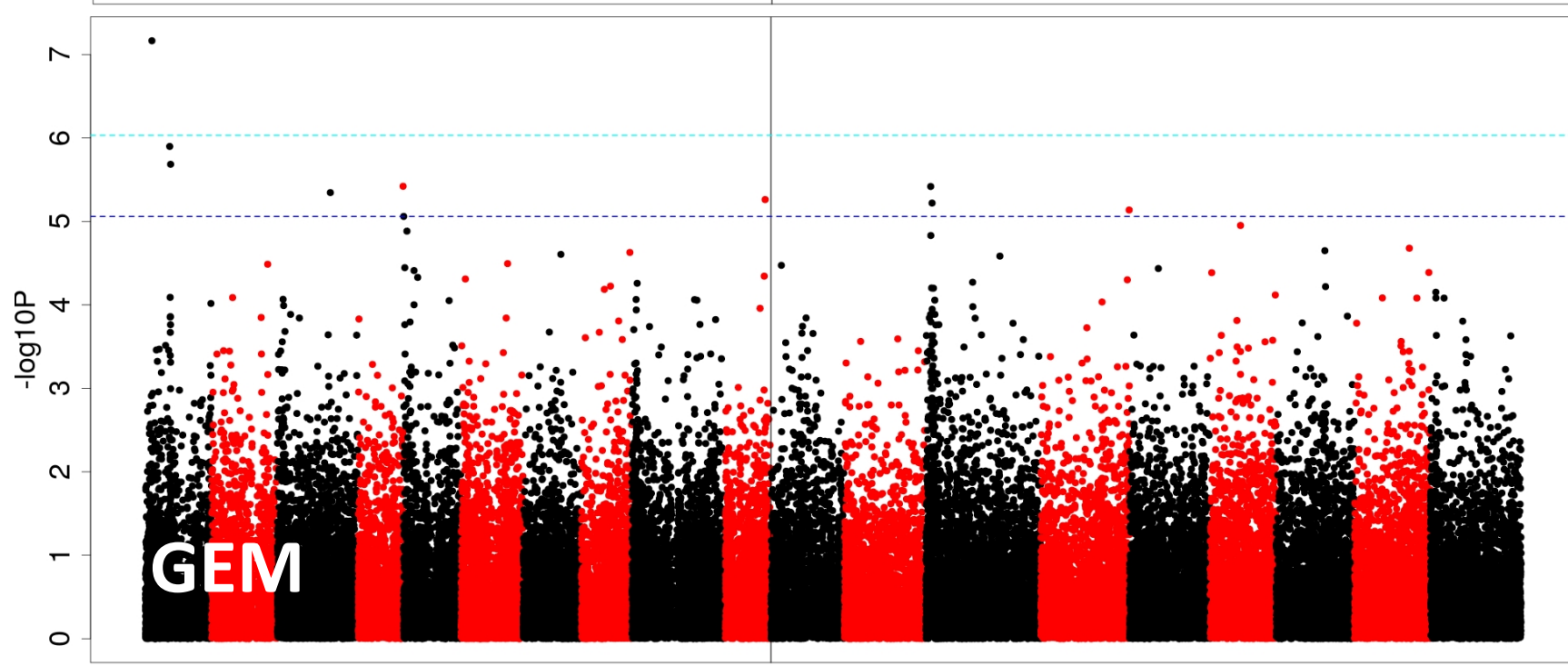
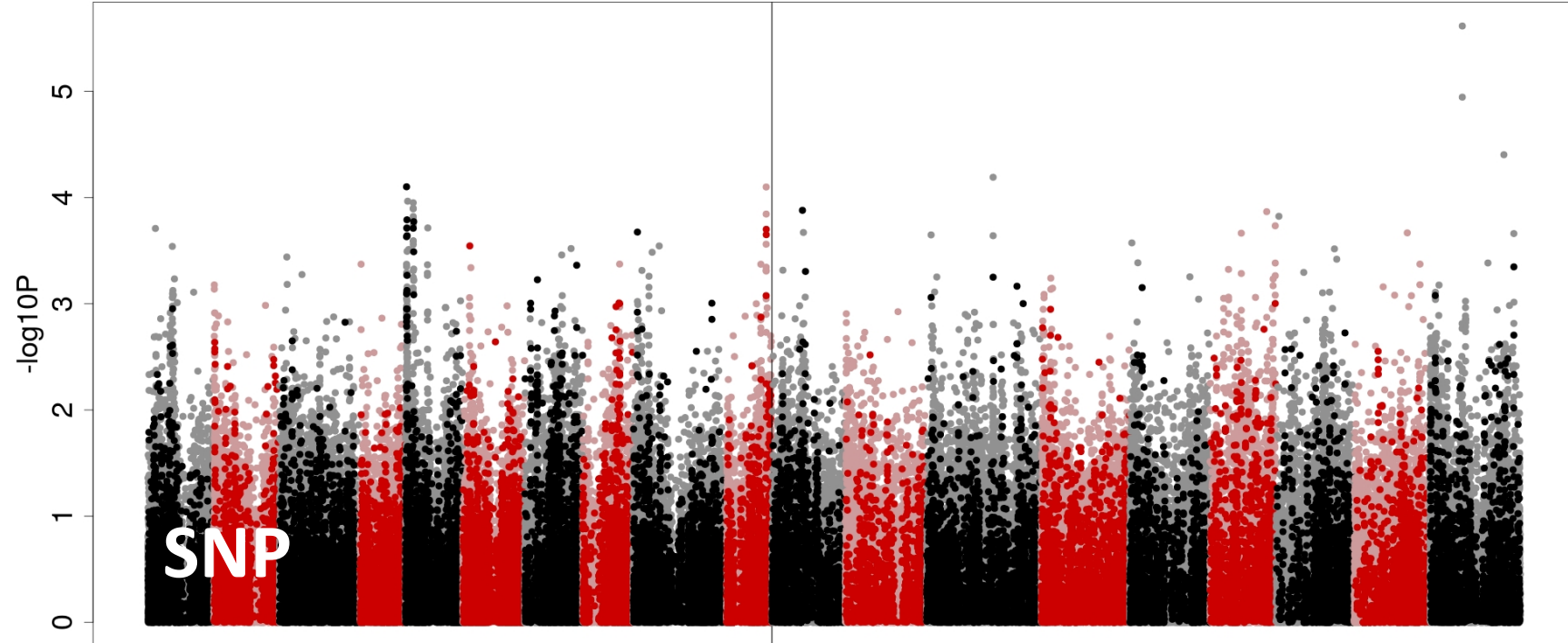
LLS incidence 0-10 (2016)

92 lines analysed



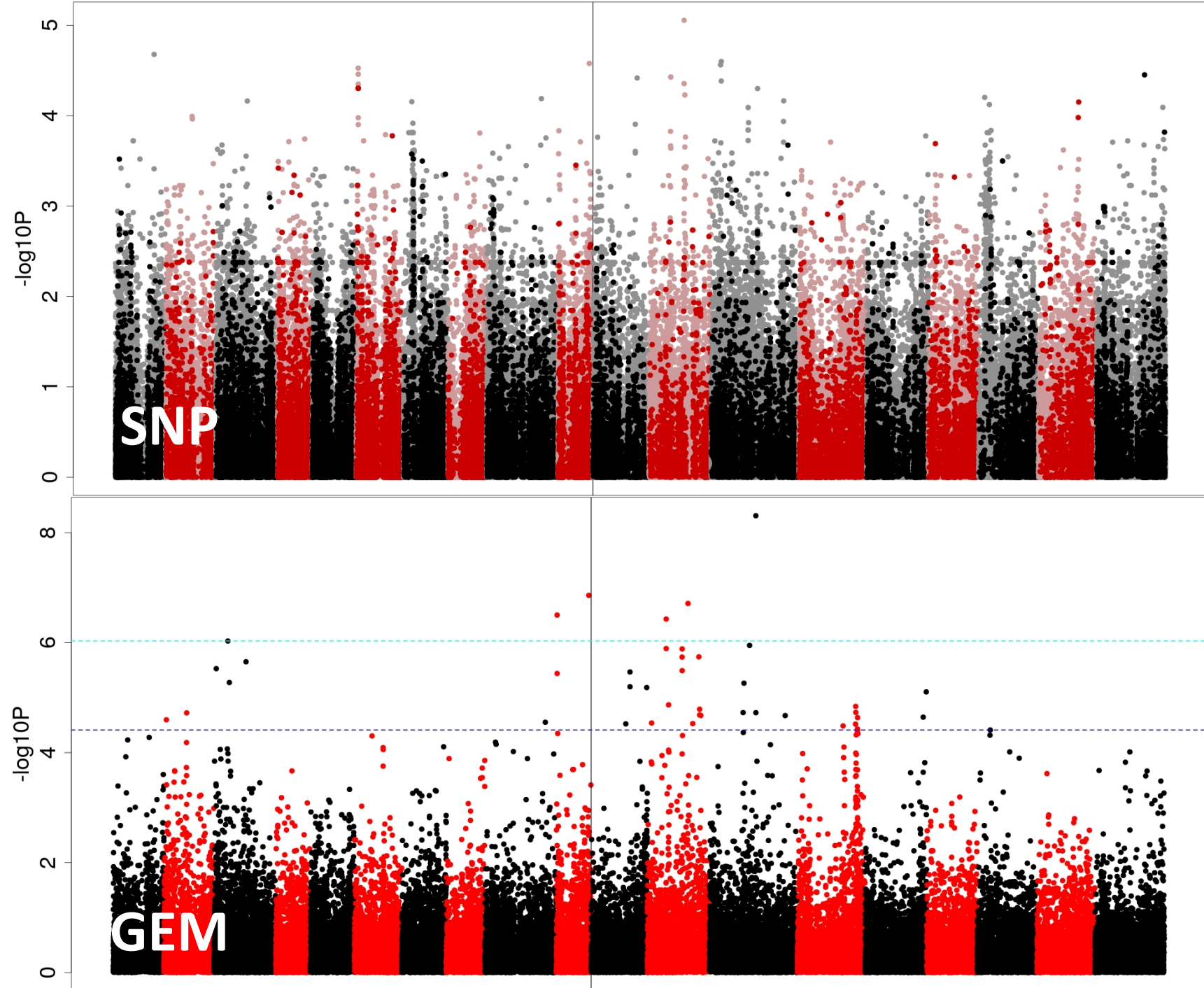
LLS severity 0-7 (2016)

92 lines analysed



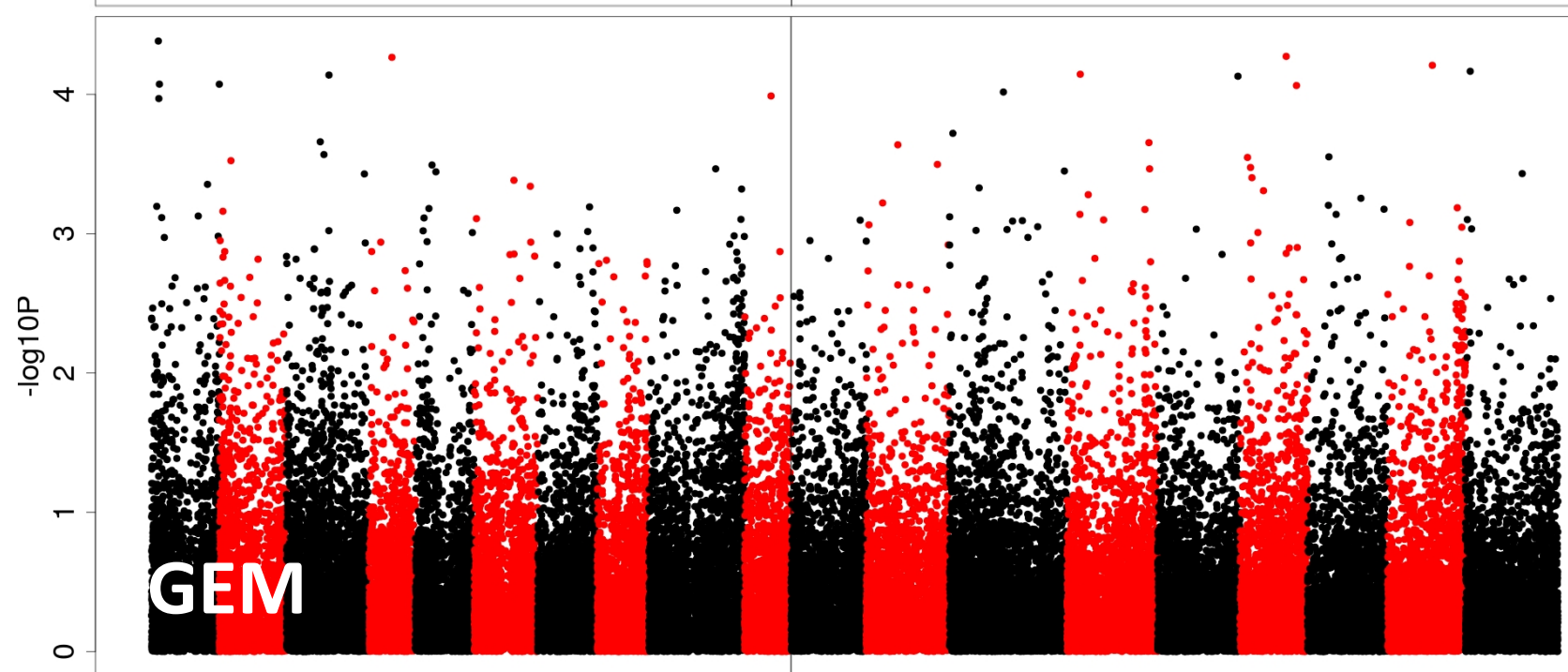
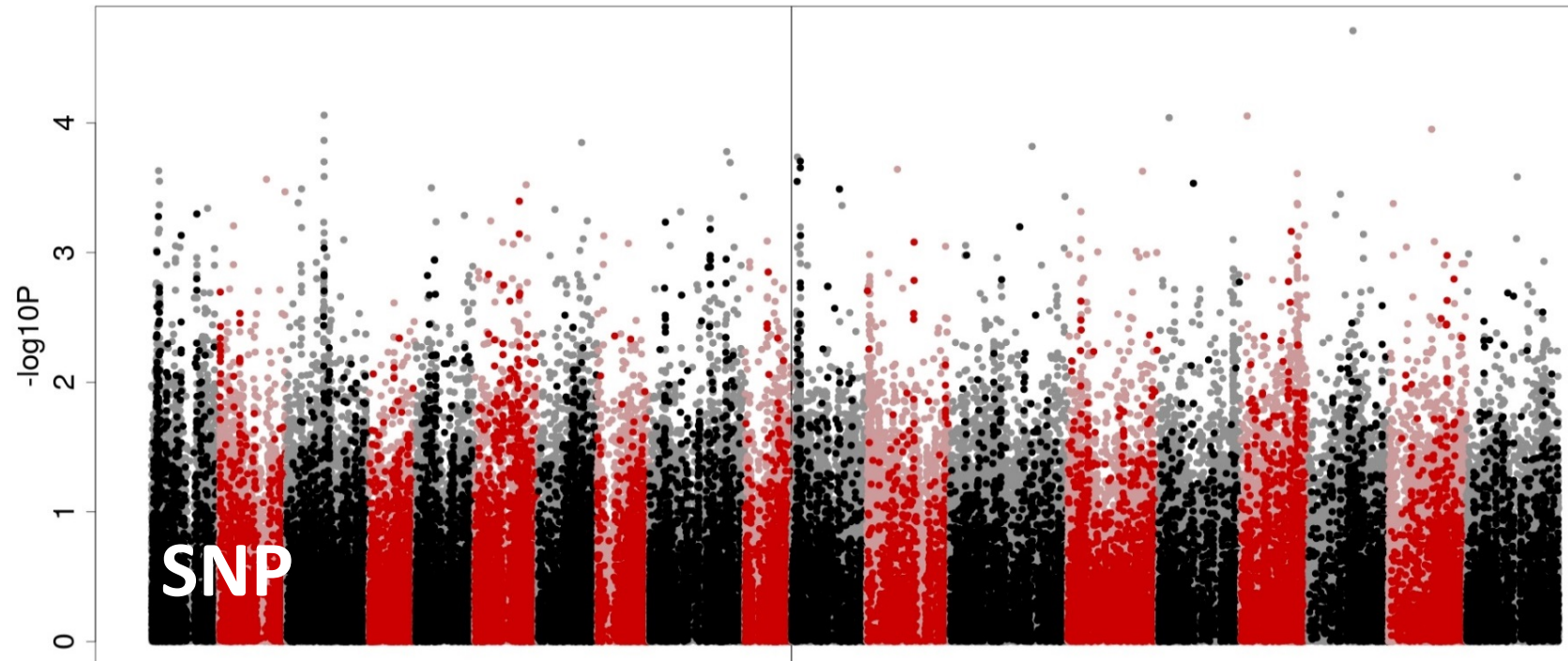
Phoma (2016)

81 lines analysed



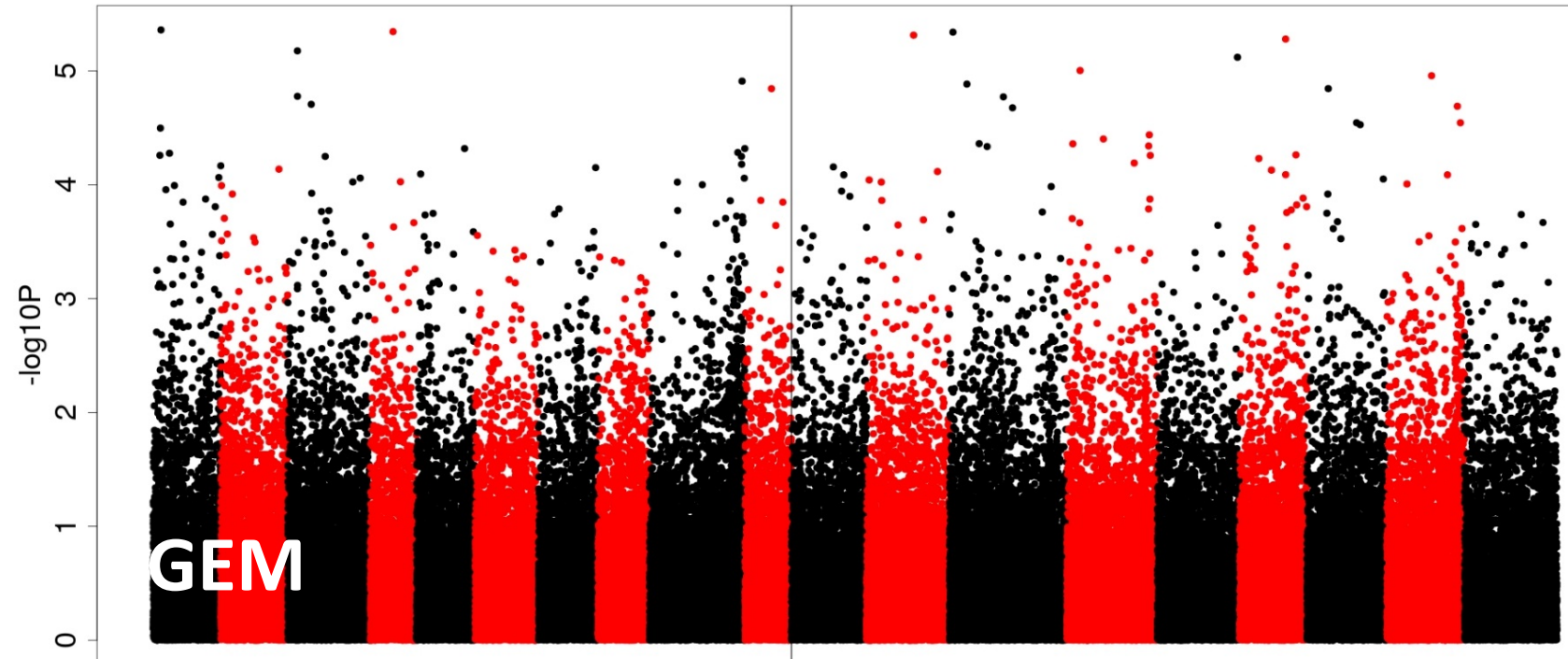
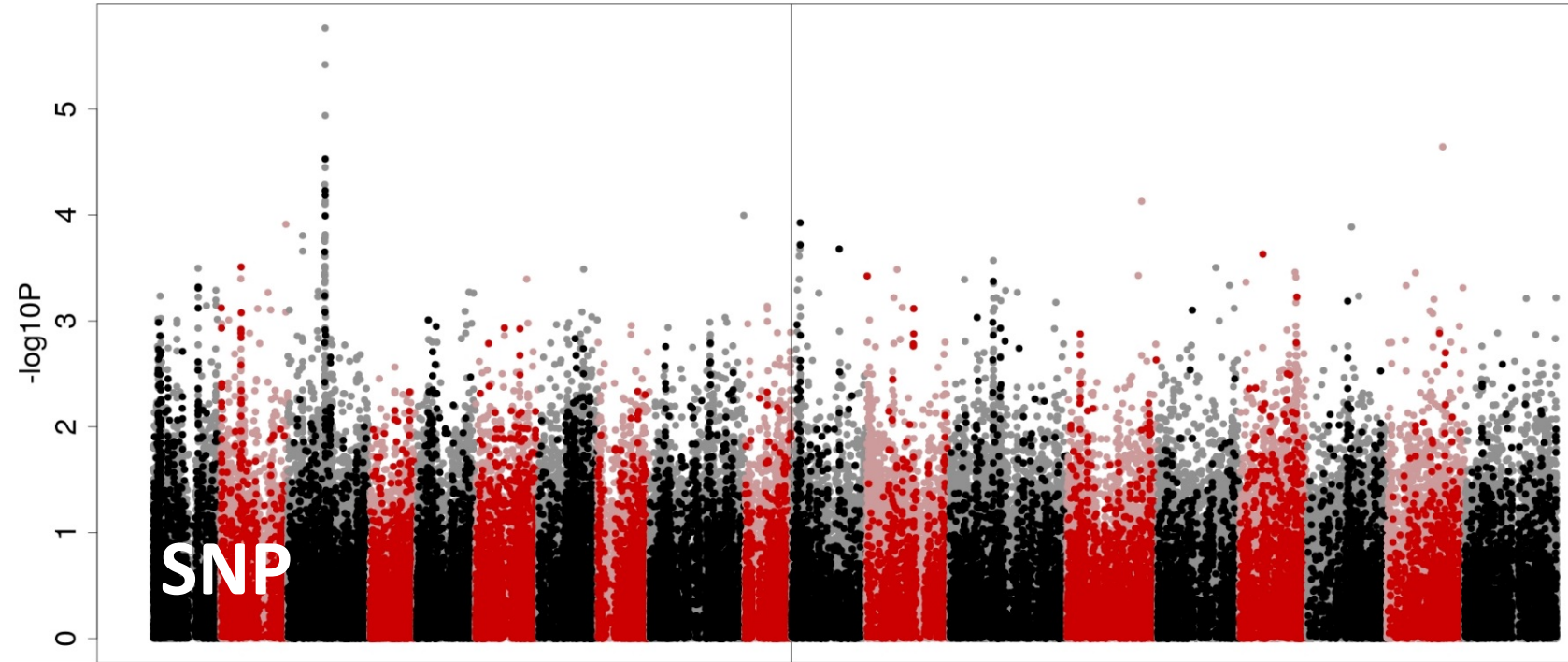
Establishment score

164 lines analysed



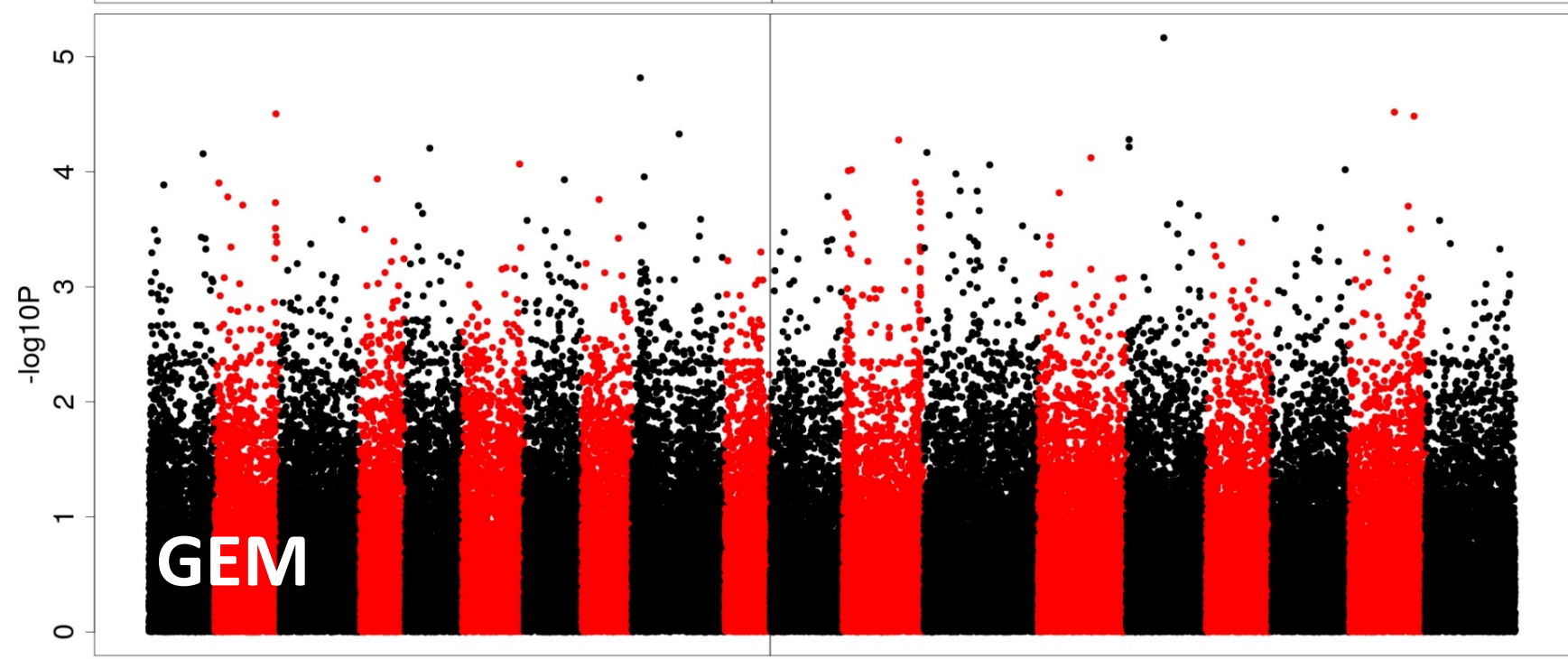
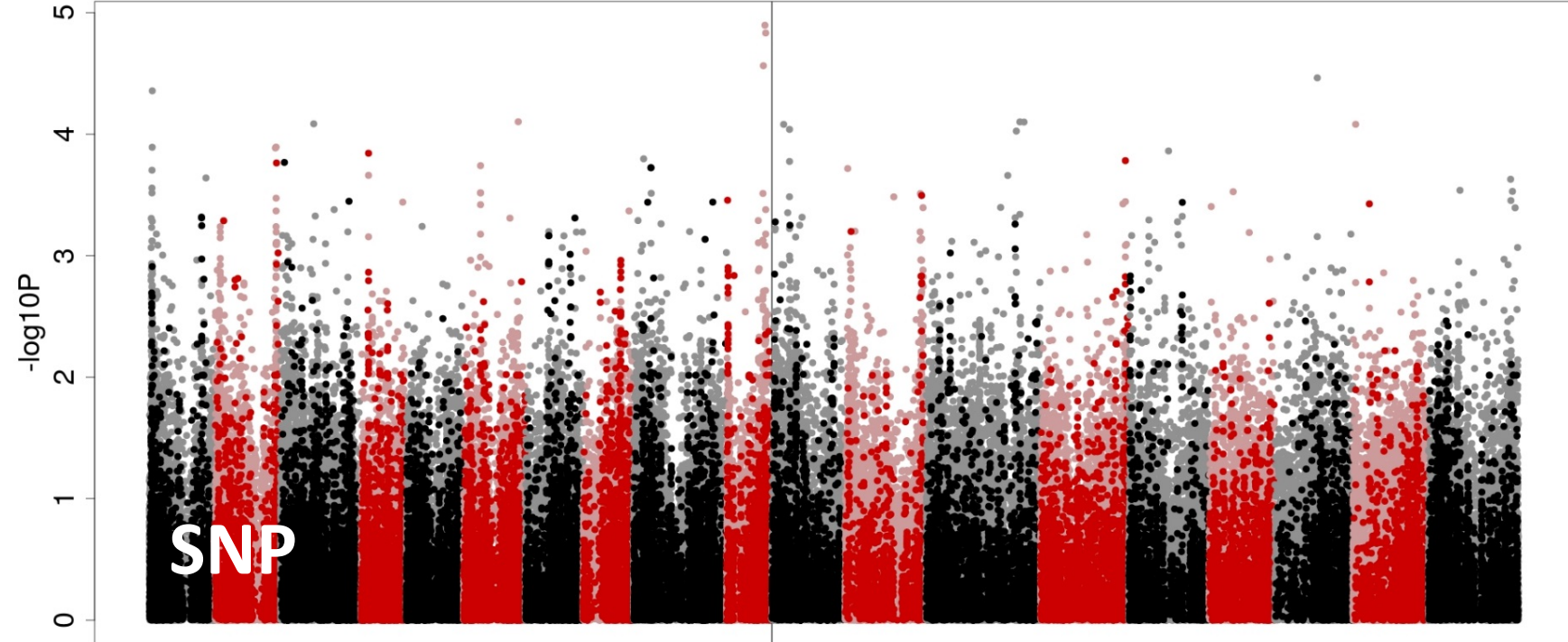
Estimated plant no. (plants per m²)

164 lines analysed



Pod maturity score

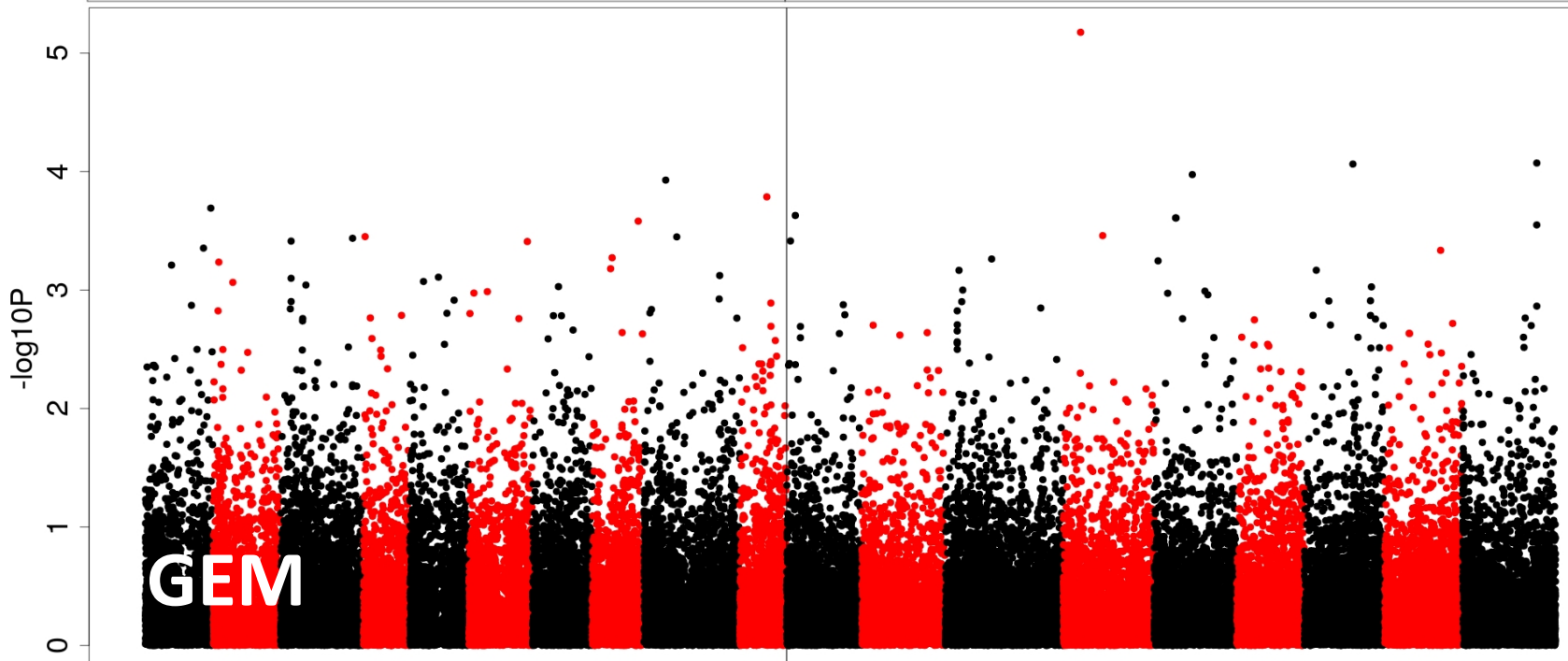
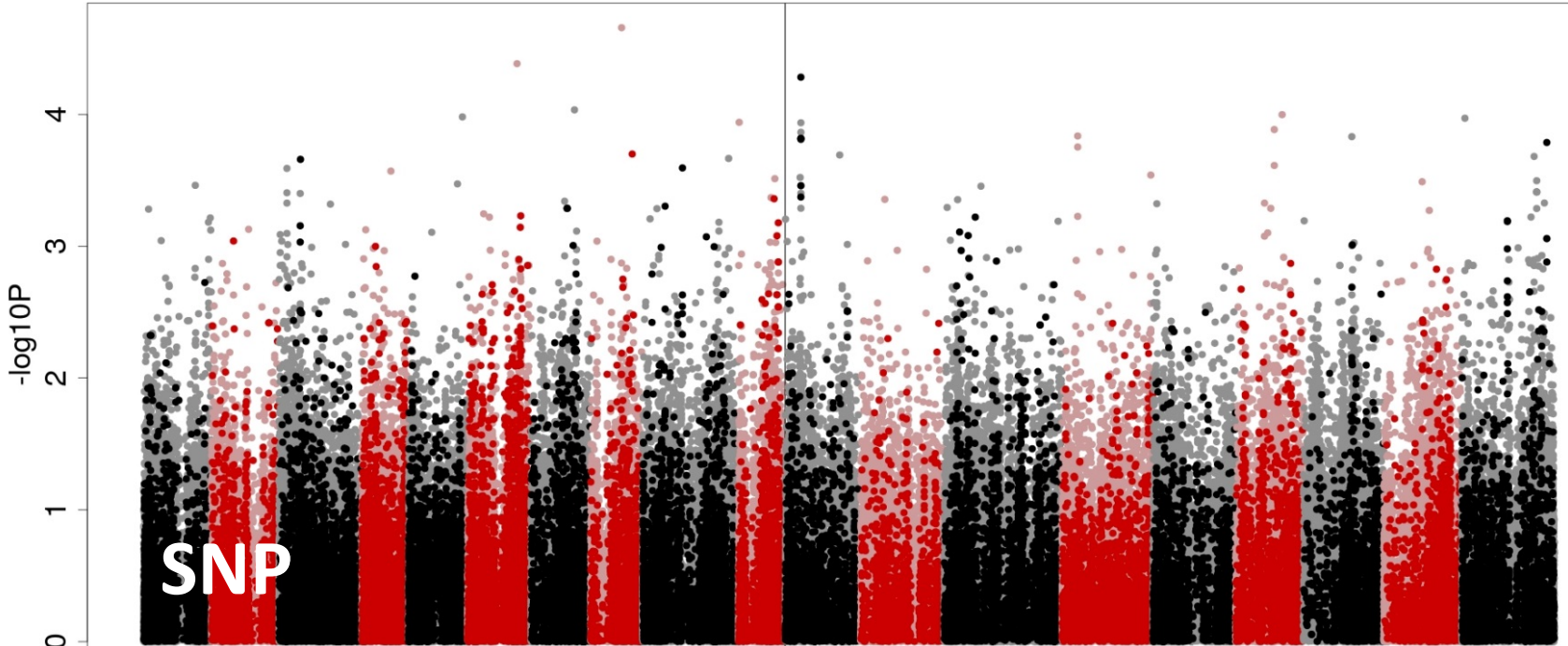
164 lines analysed



Sclerotinia

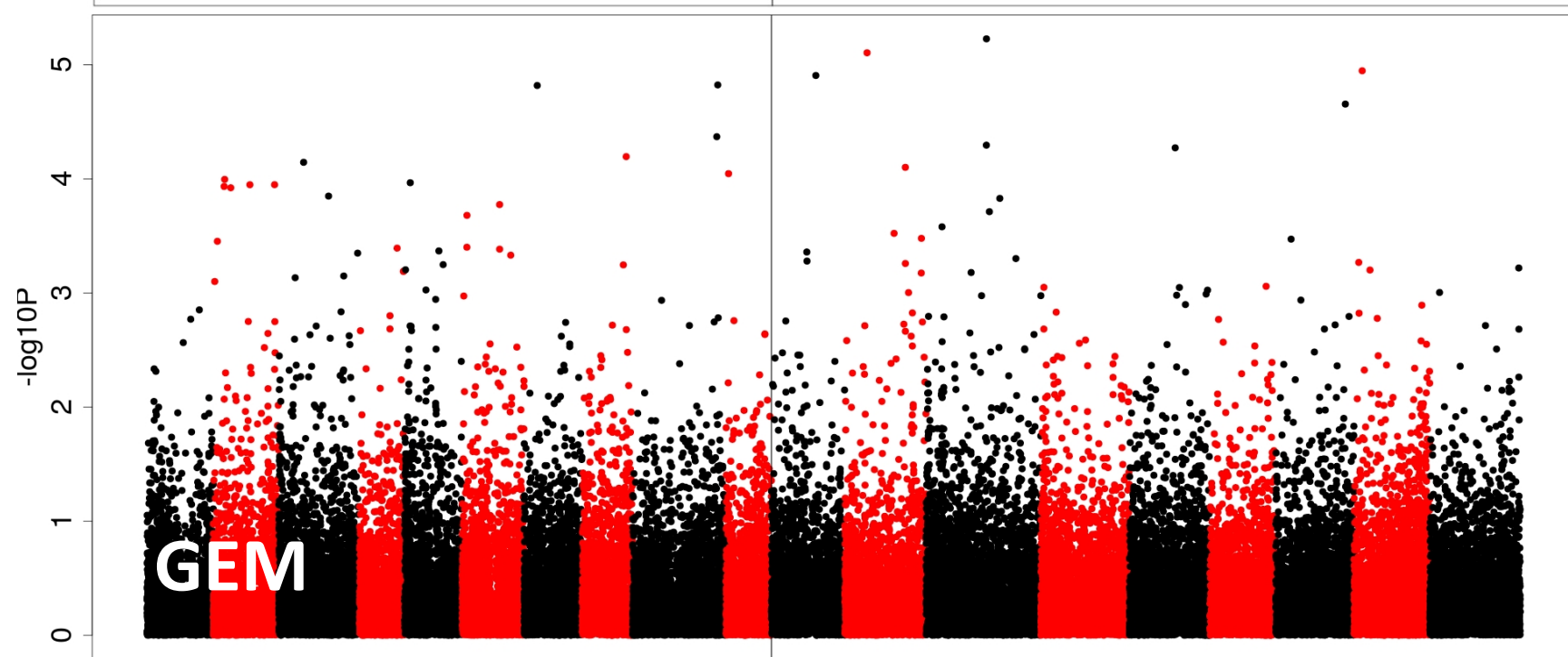
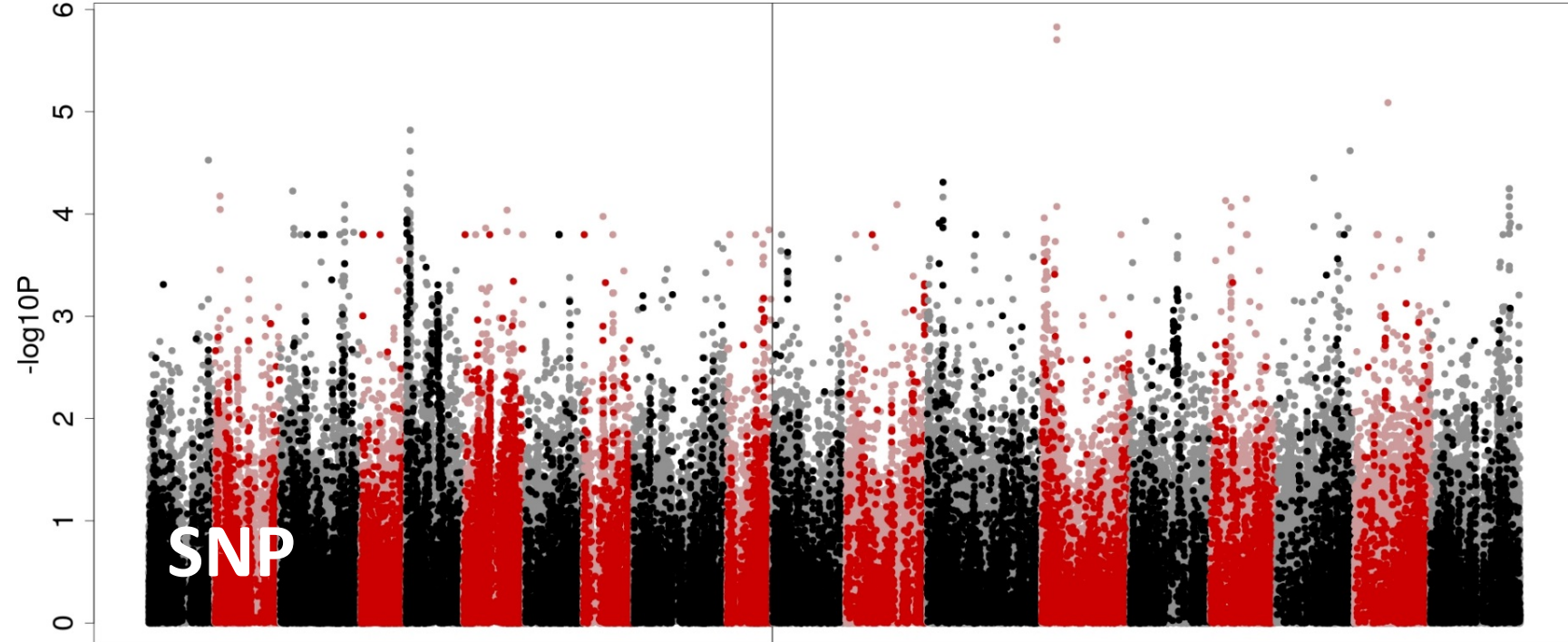
(% plants affected)

162 lines analysed



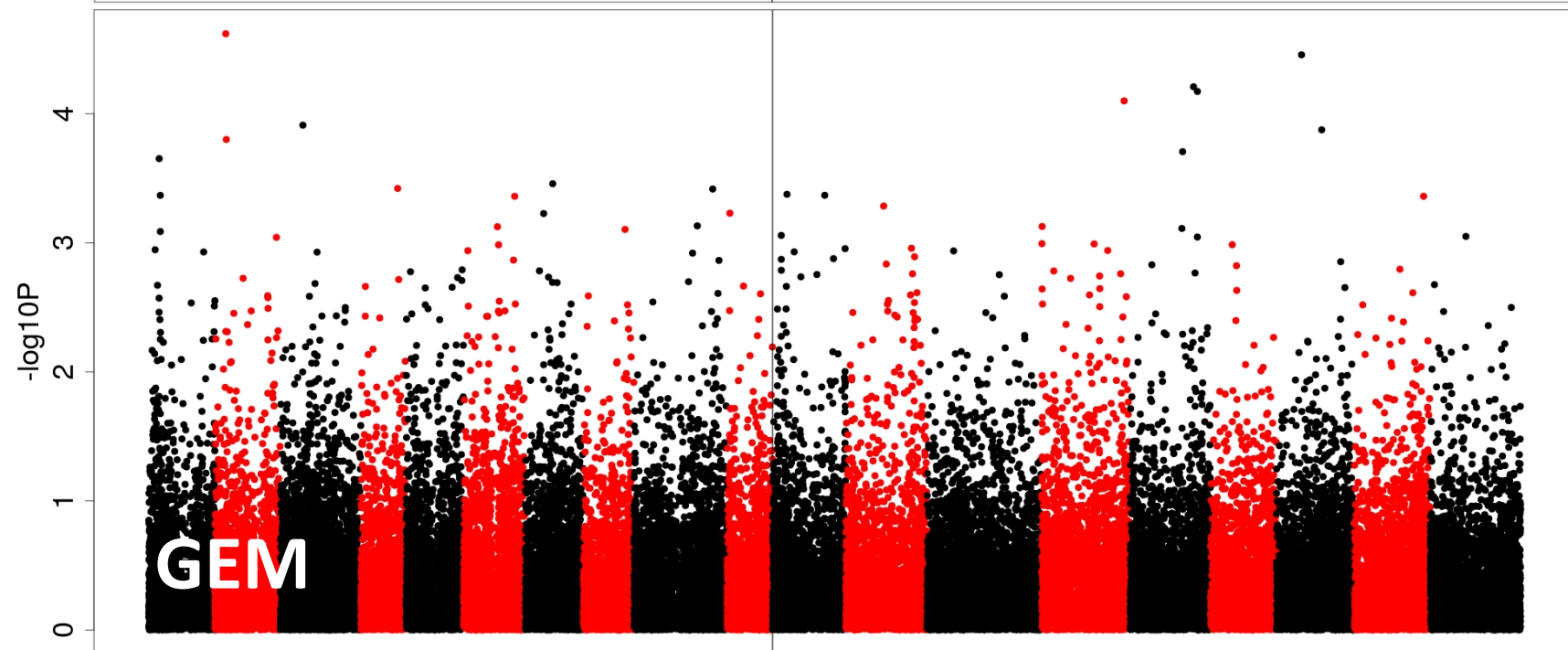
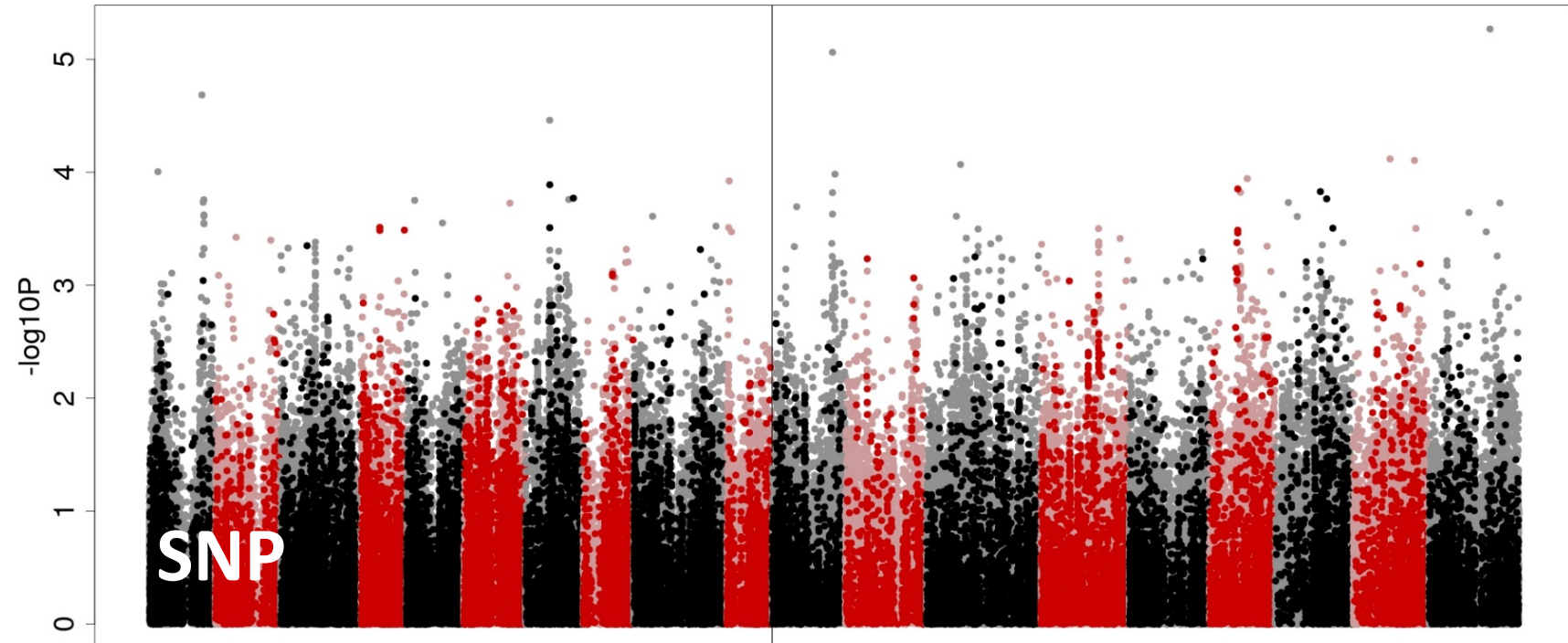
Sclerotinia (% stems affected)

162 lines analysed



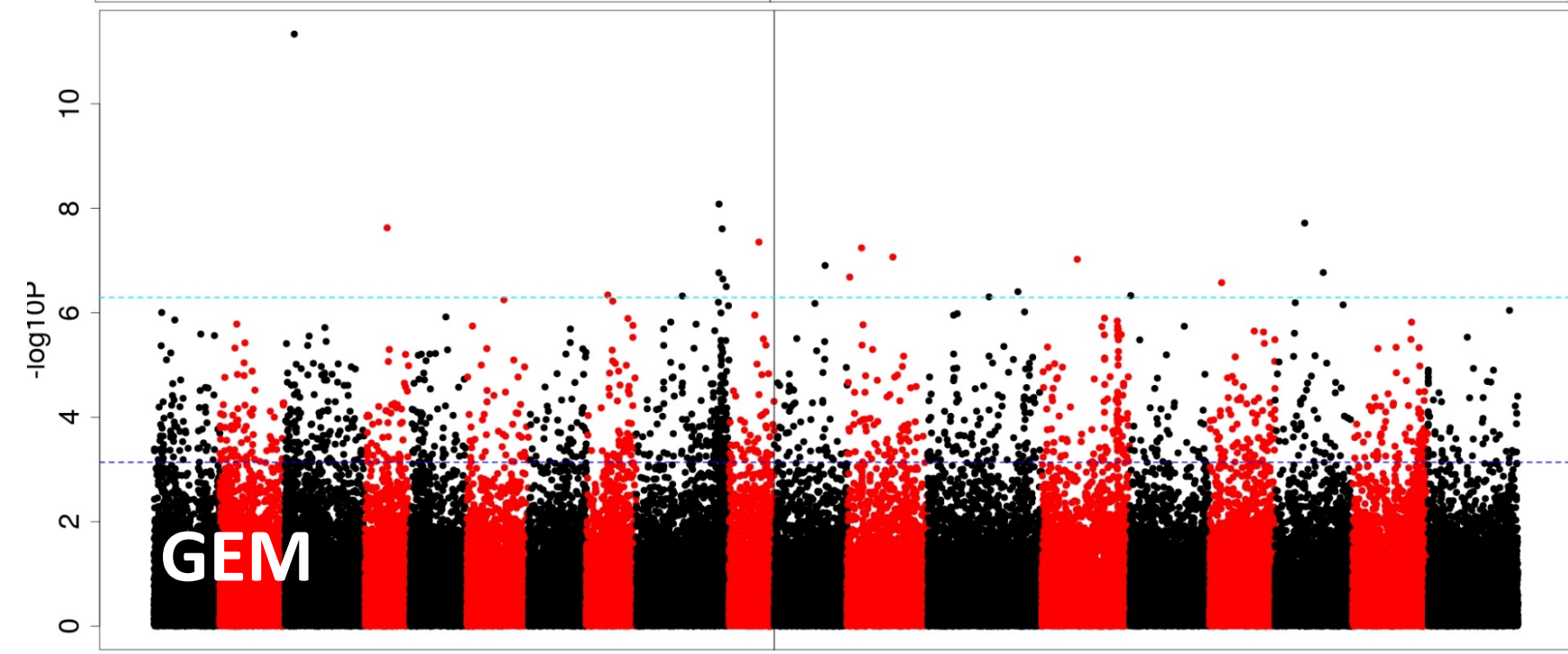
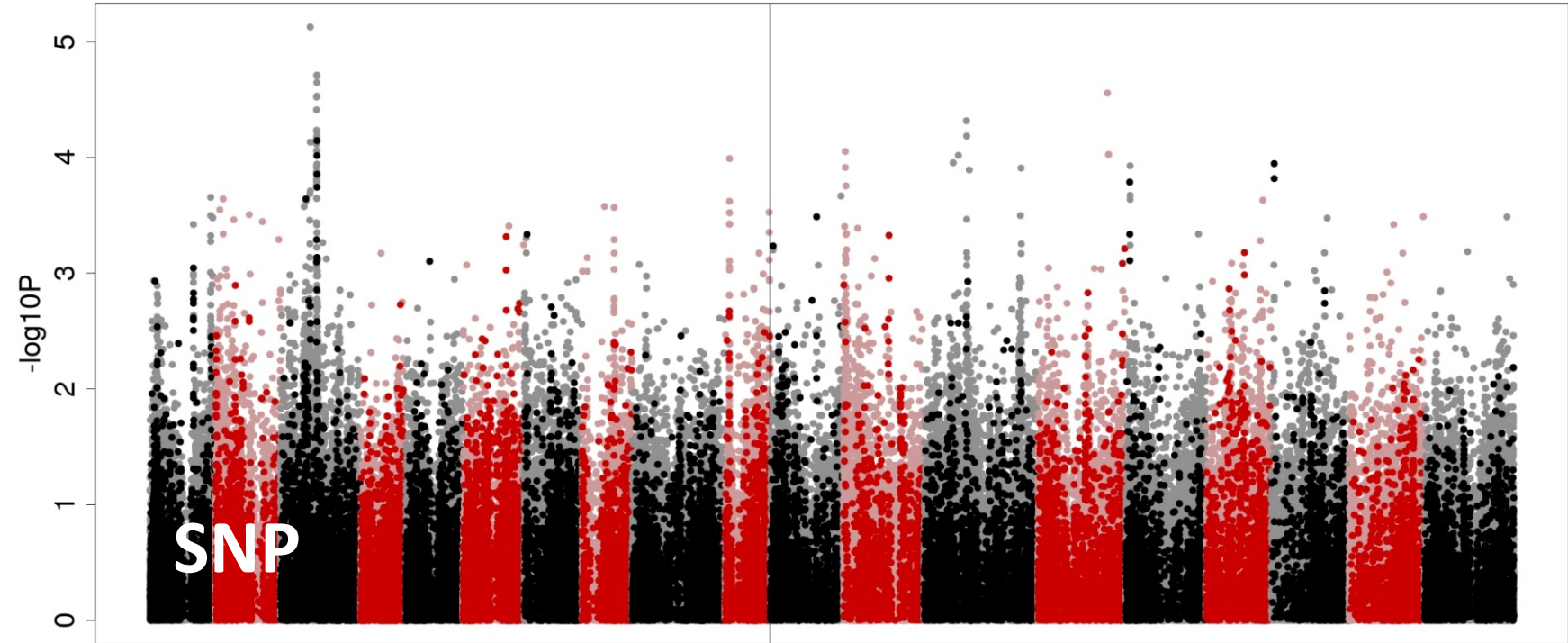
Stem canker score (Phoma)

164 lines analysed



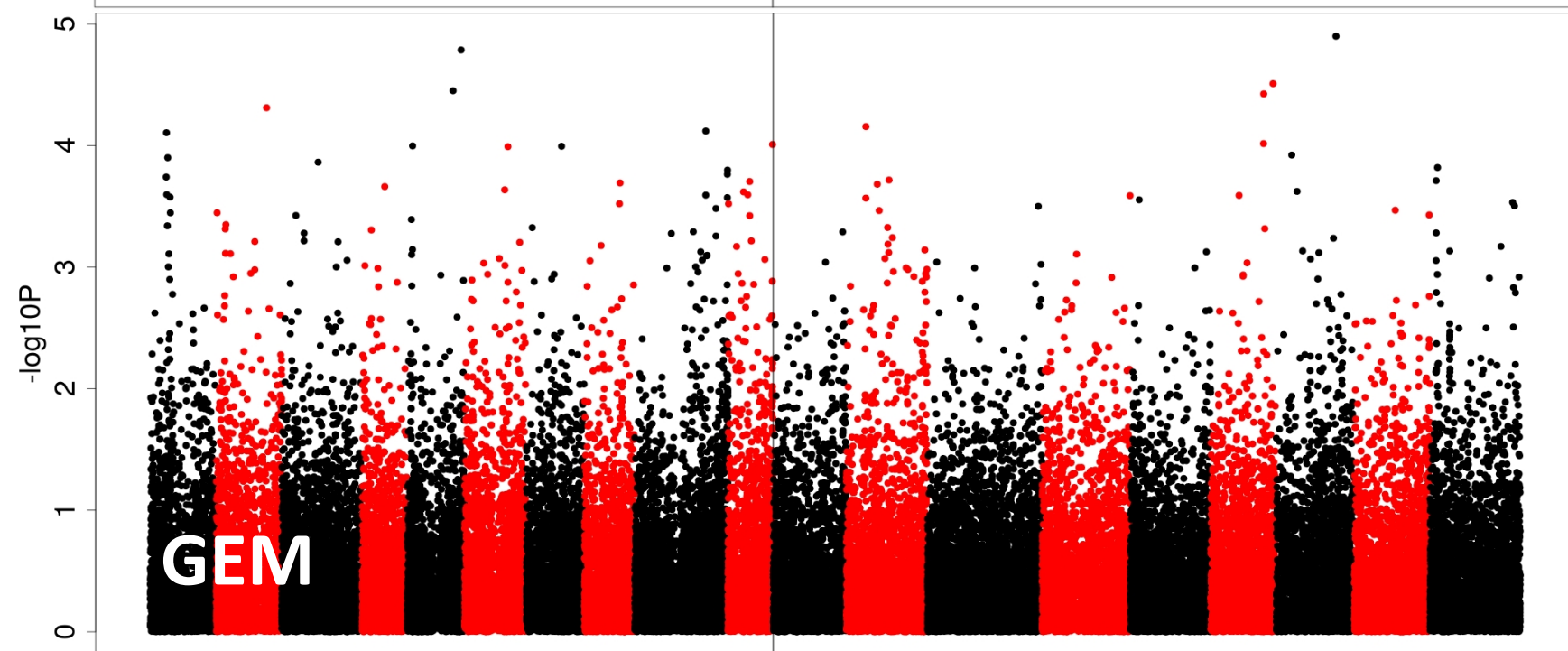
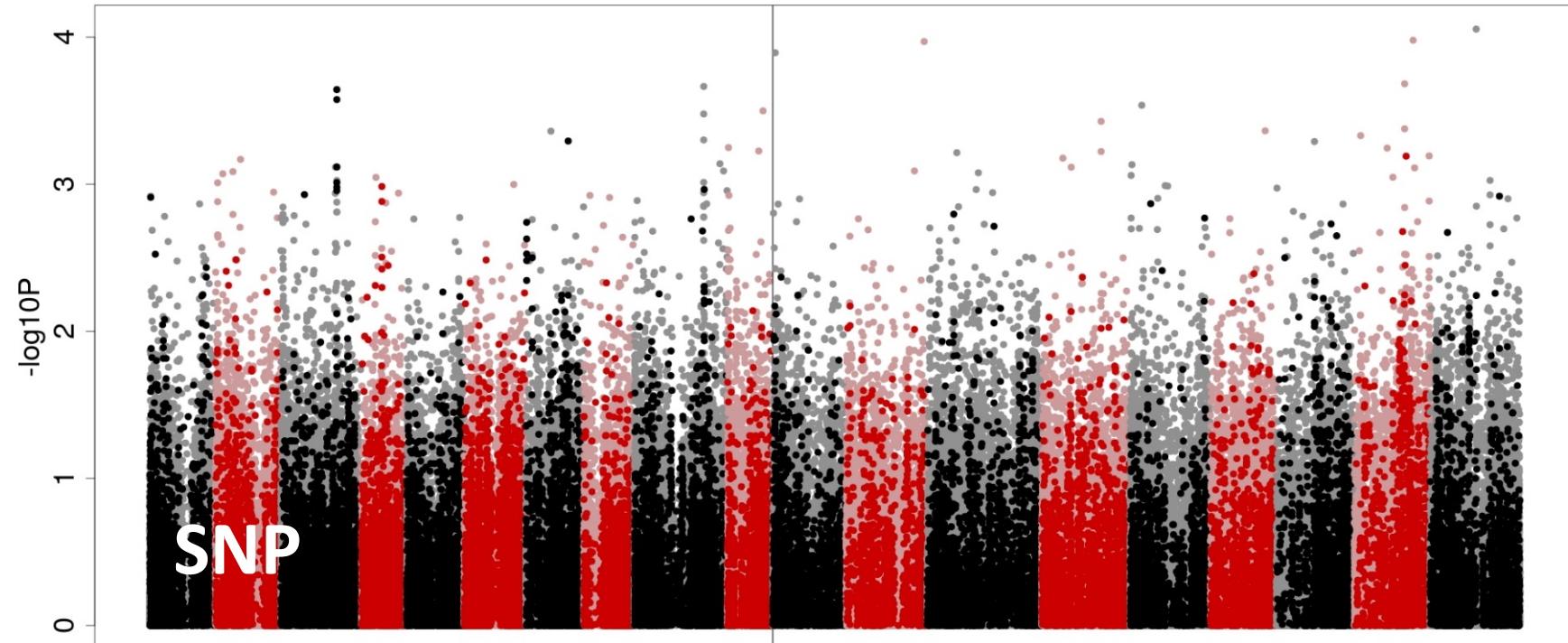
Vigour score

164 lines analysed



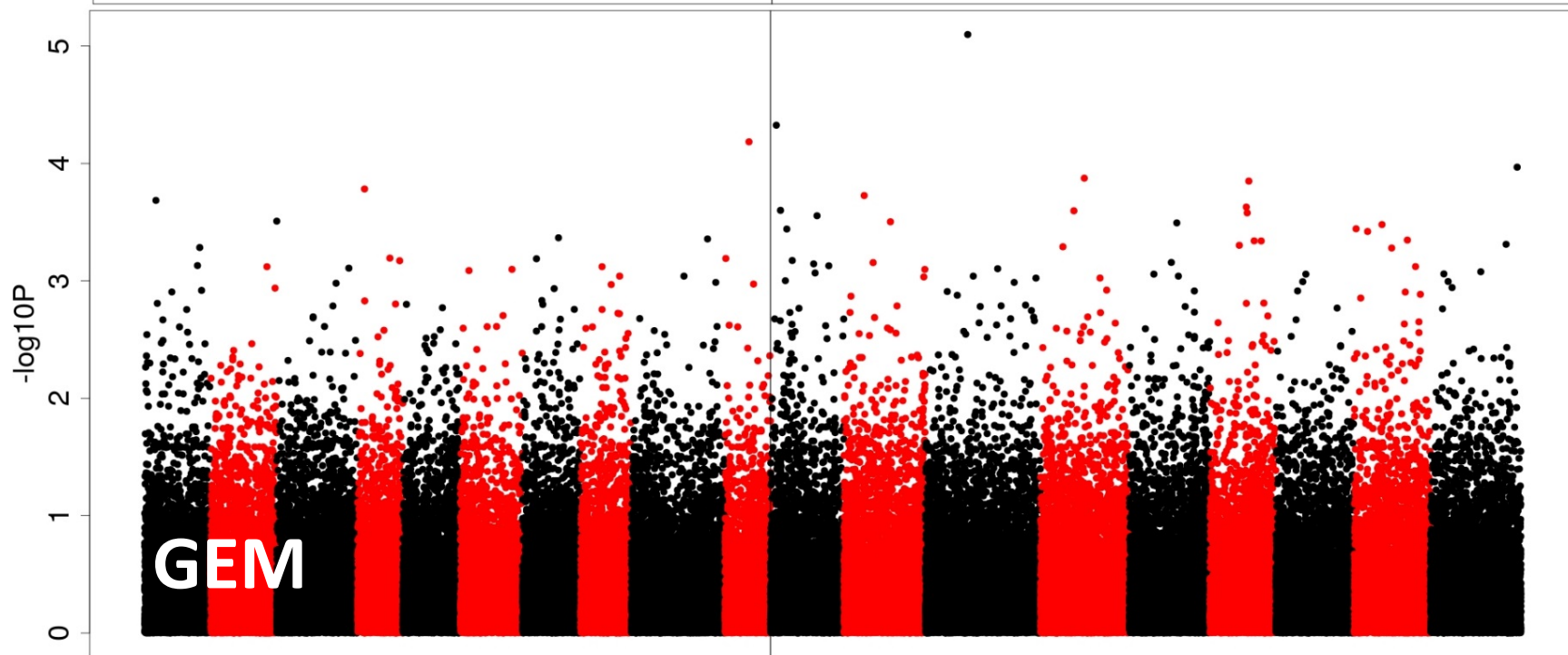
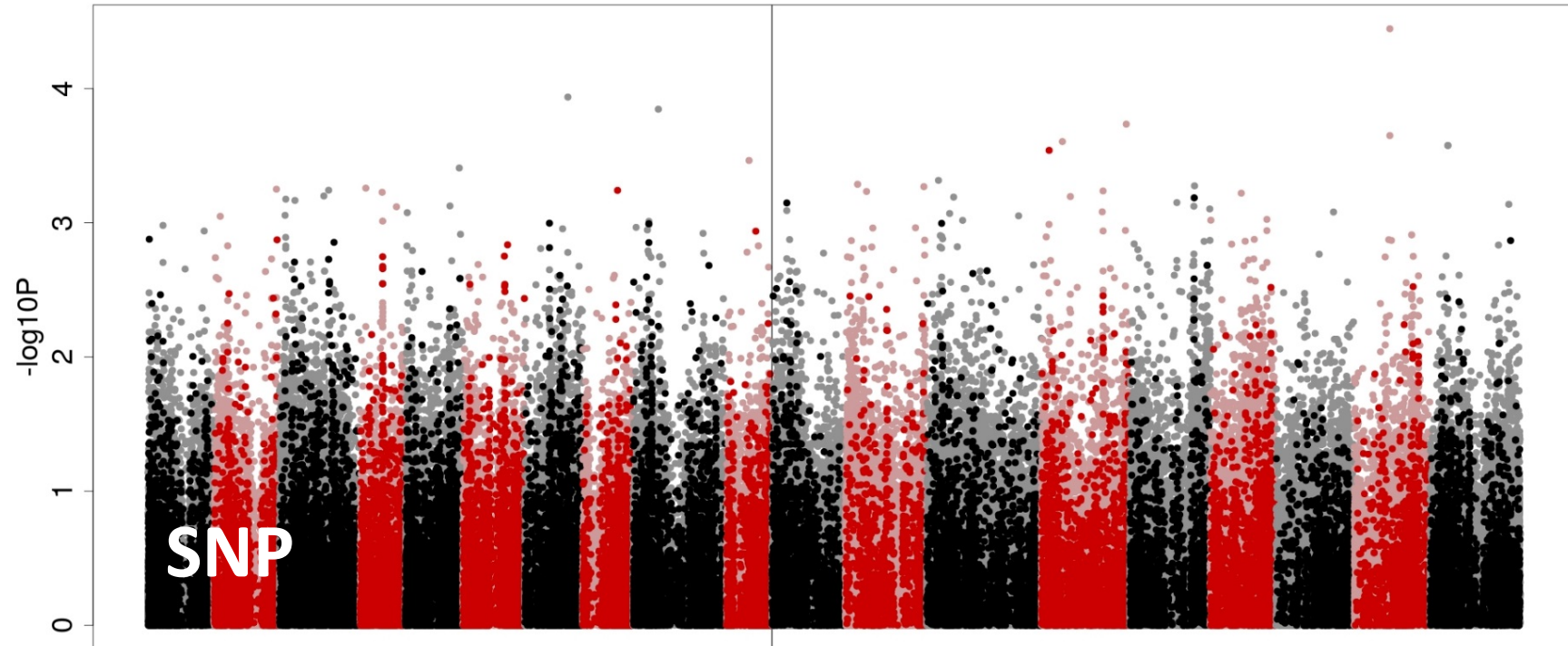
Diameter (mm)

82 lines analysed



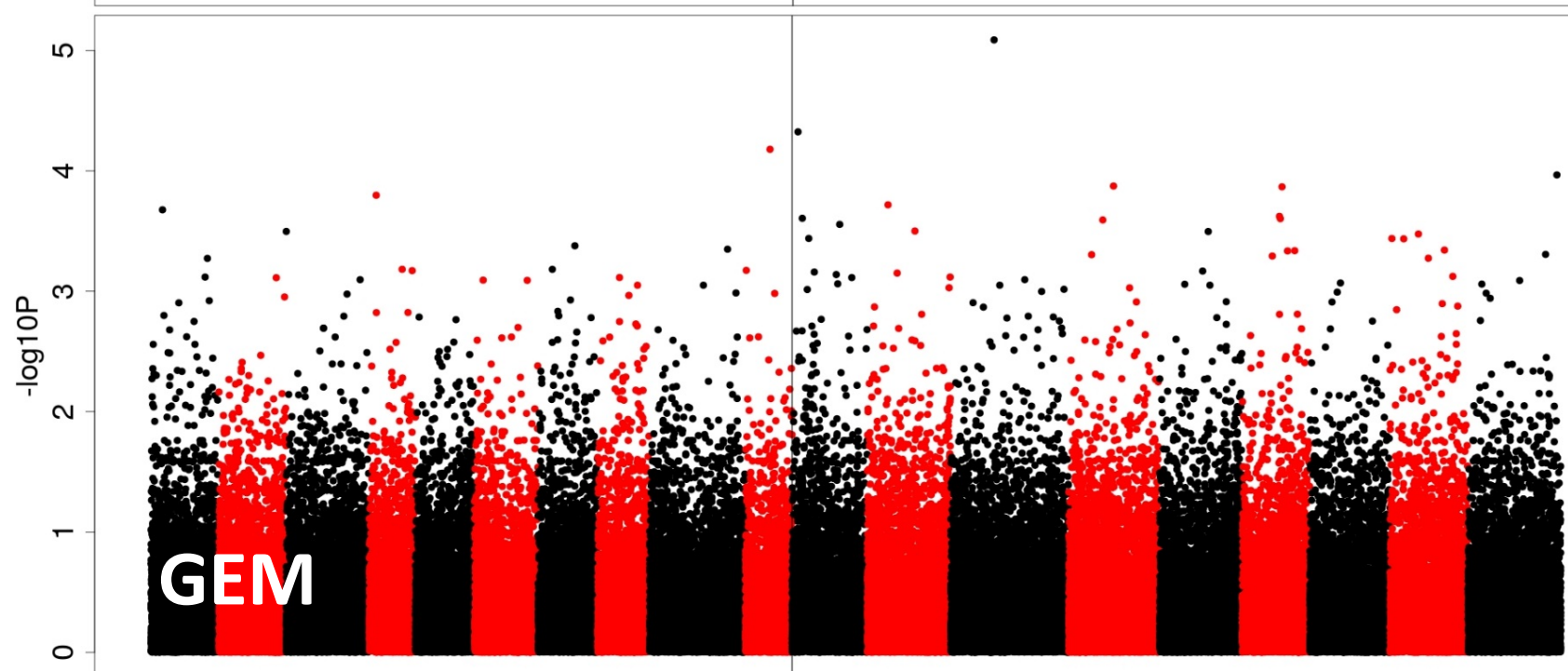
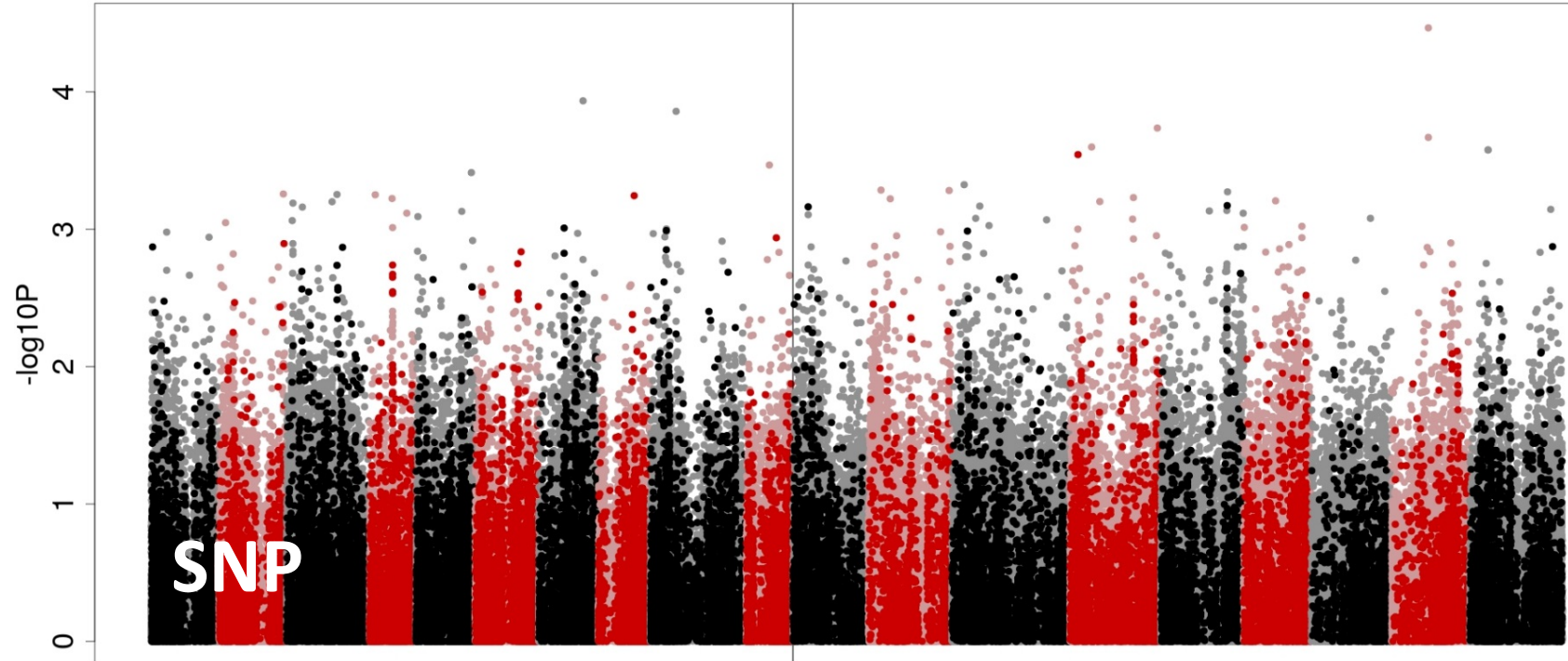
Root length density (cm root / cm³ soil)

82 lines analysed



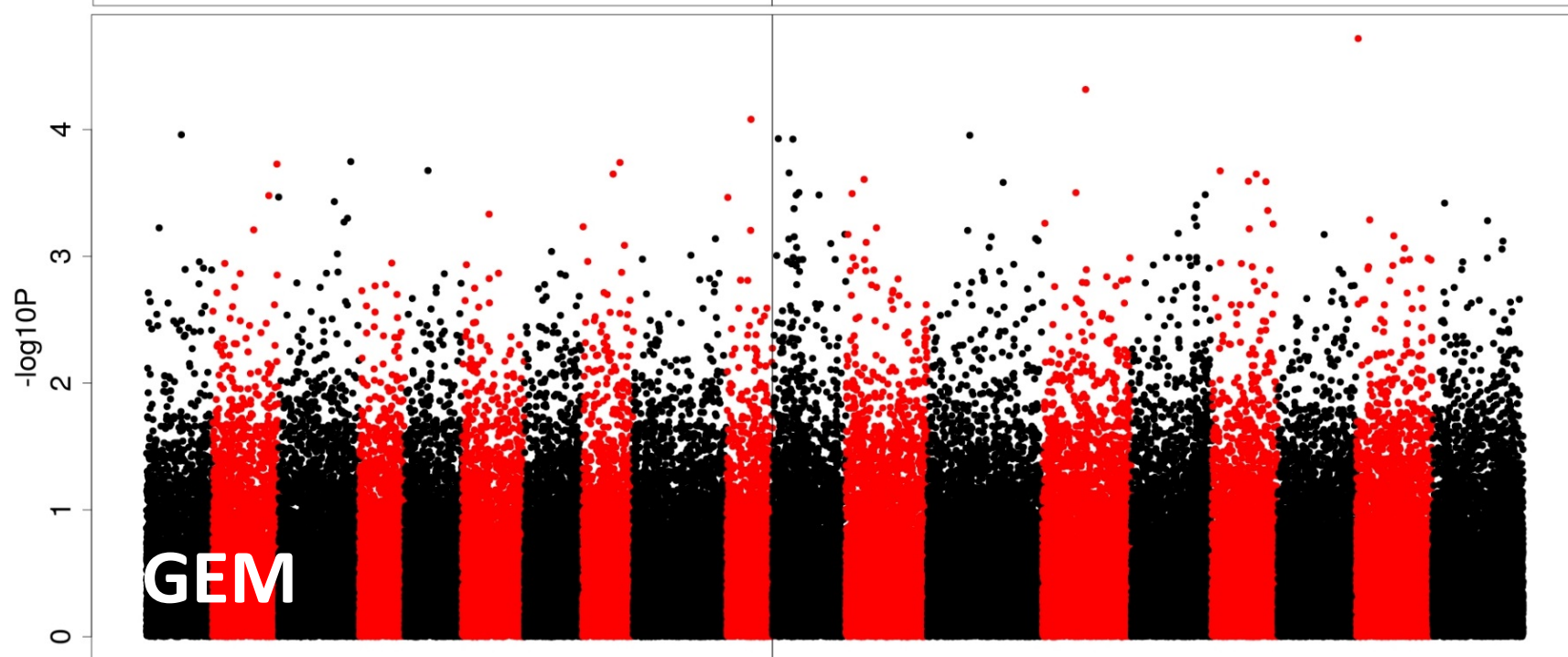
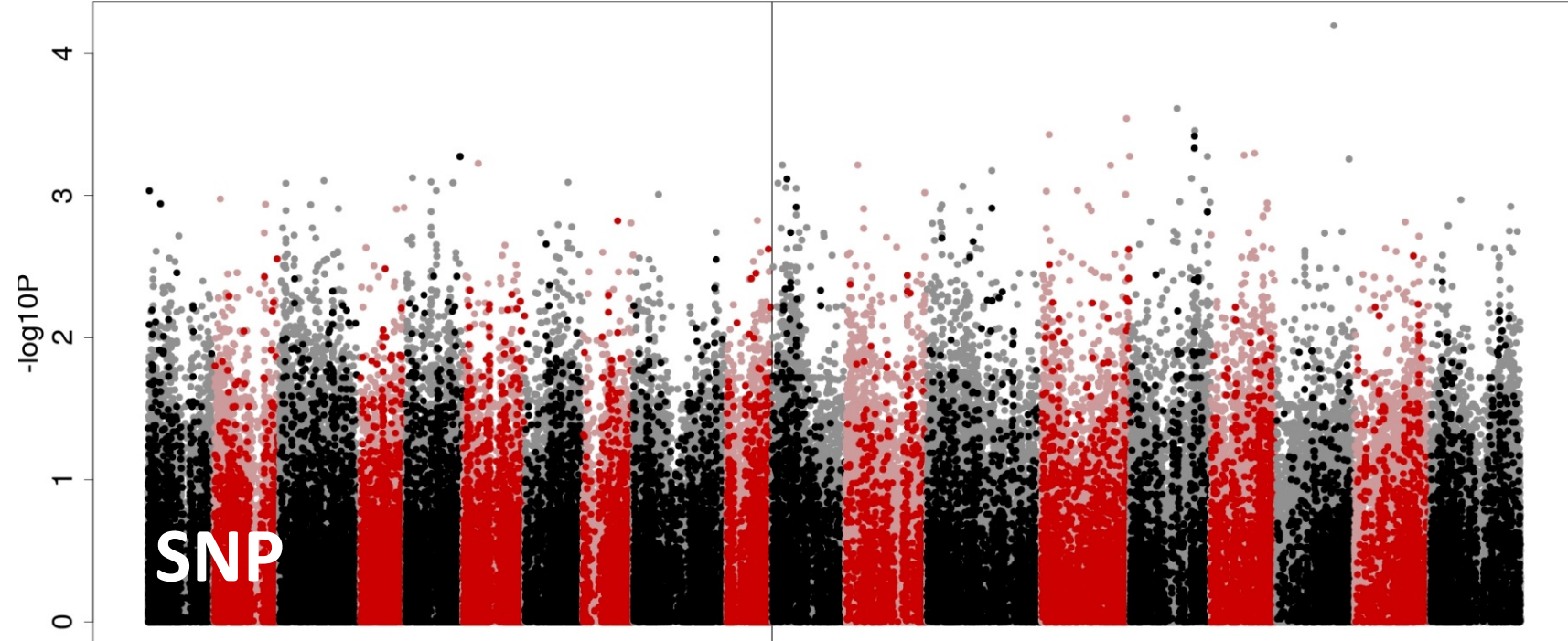
Root length density
>5mm thick
(cm root / cm³ soil)

82 lines analysed



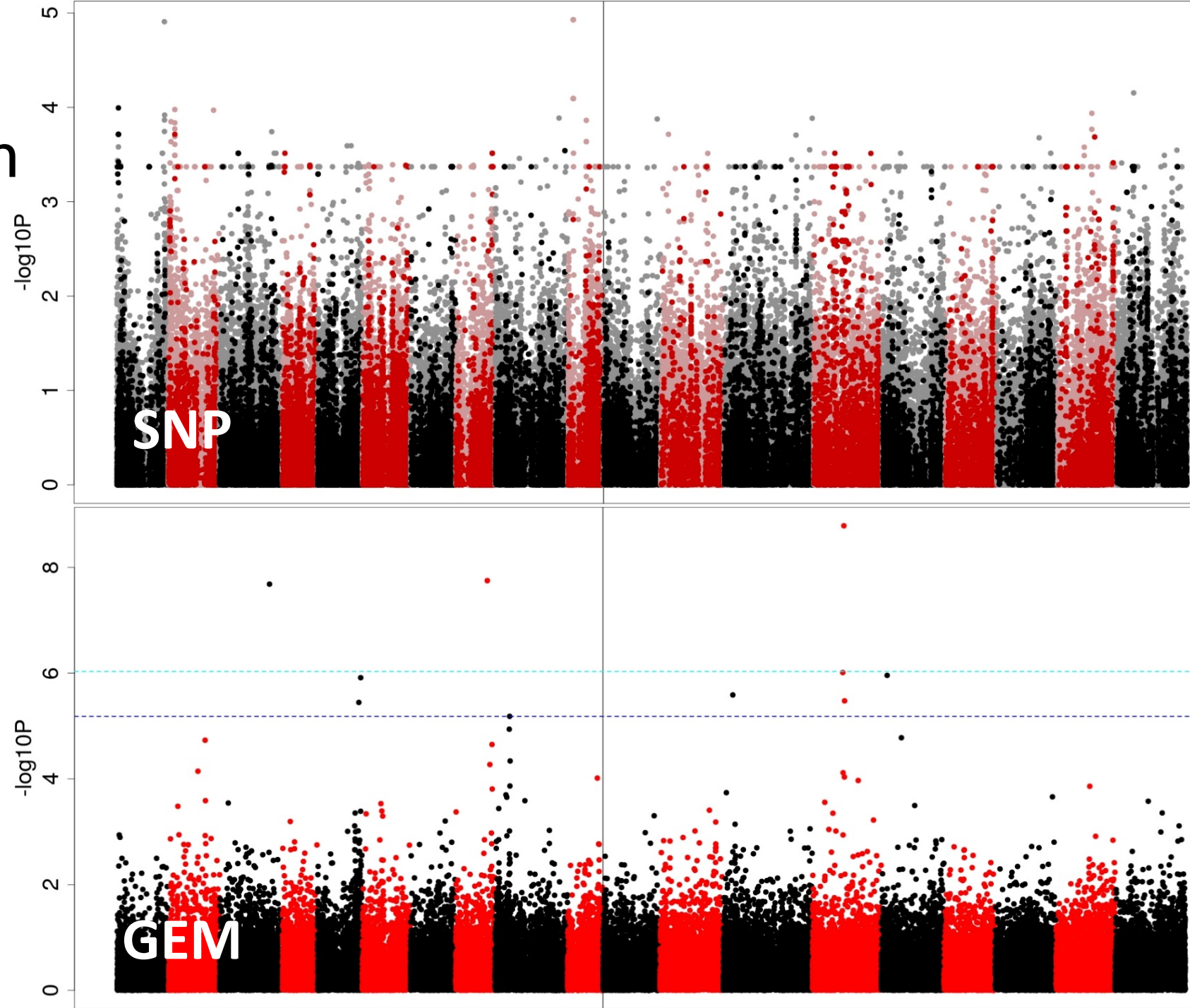
Root mass (mg/cm³)

82 lines analysed



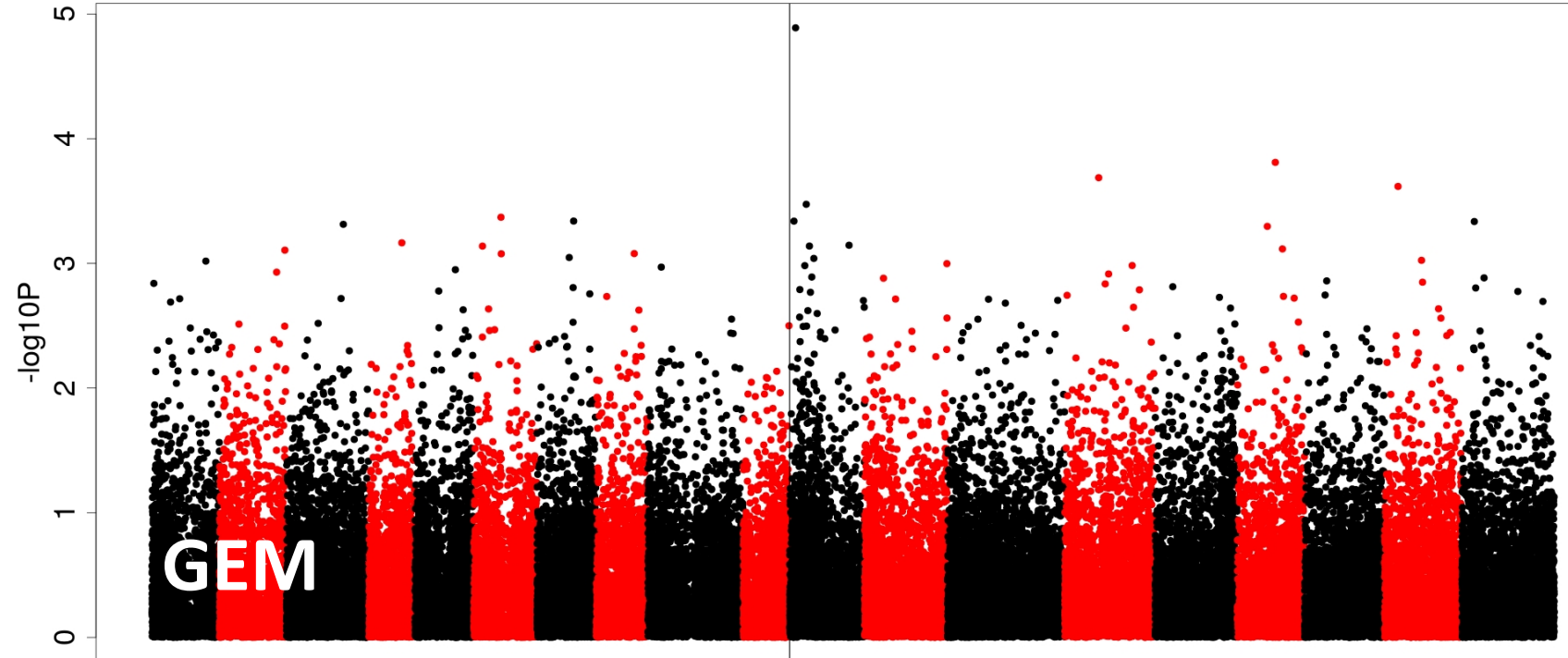
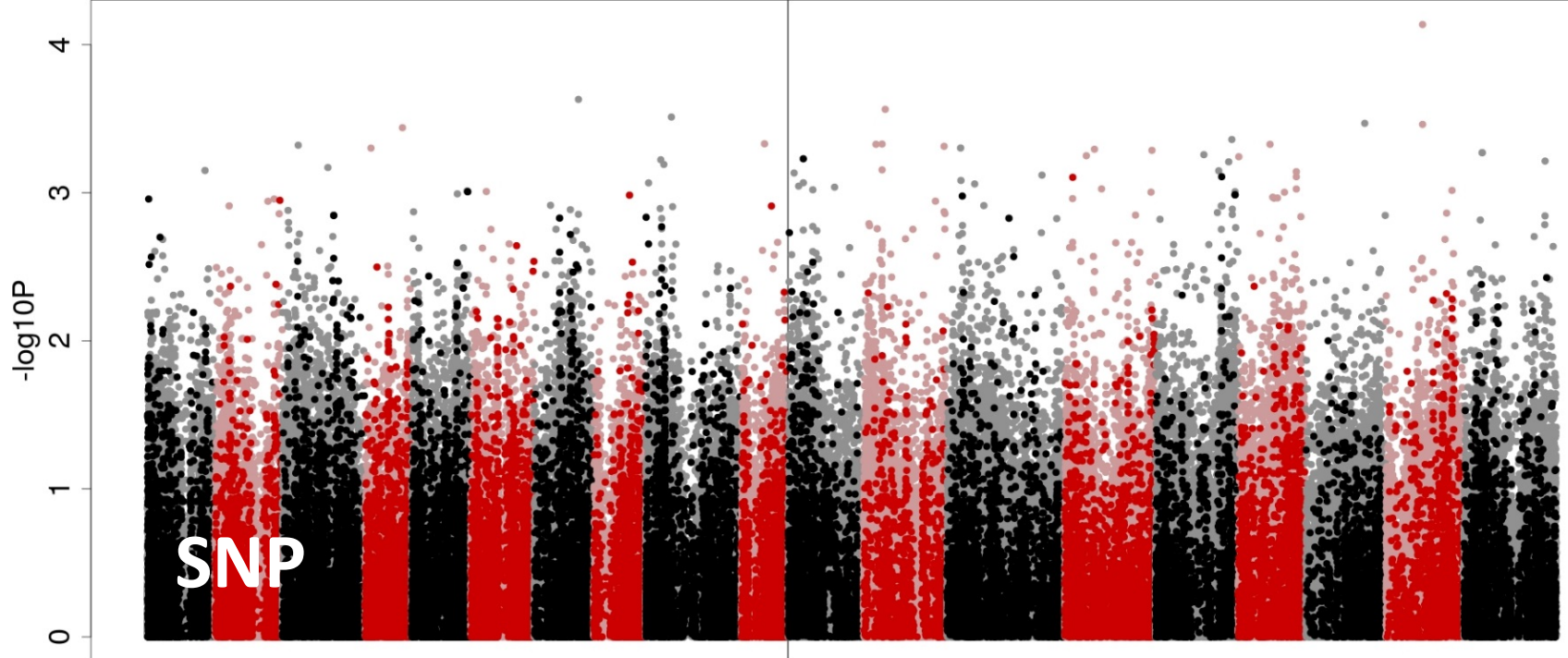
Specific root length (m/mg)

82 lines analysed



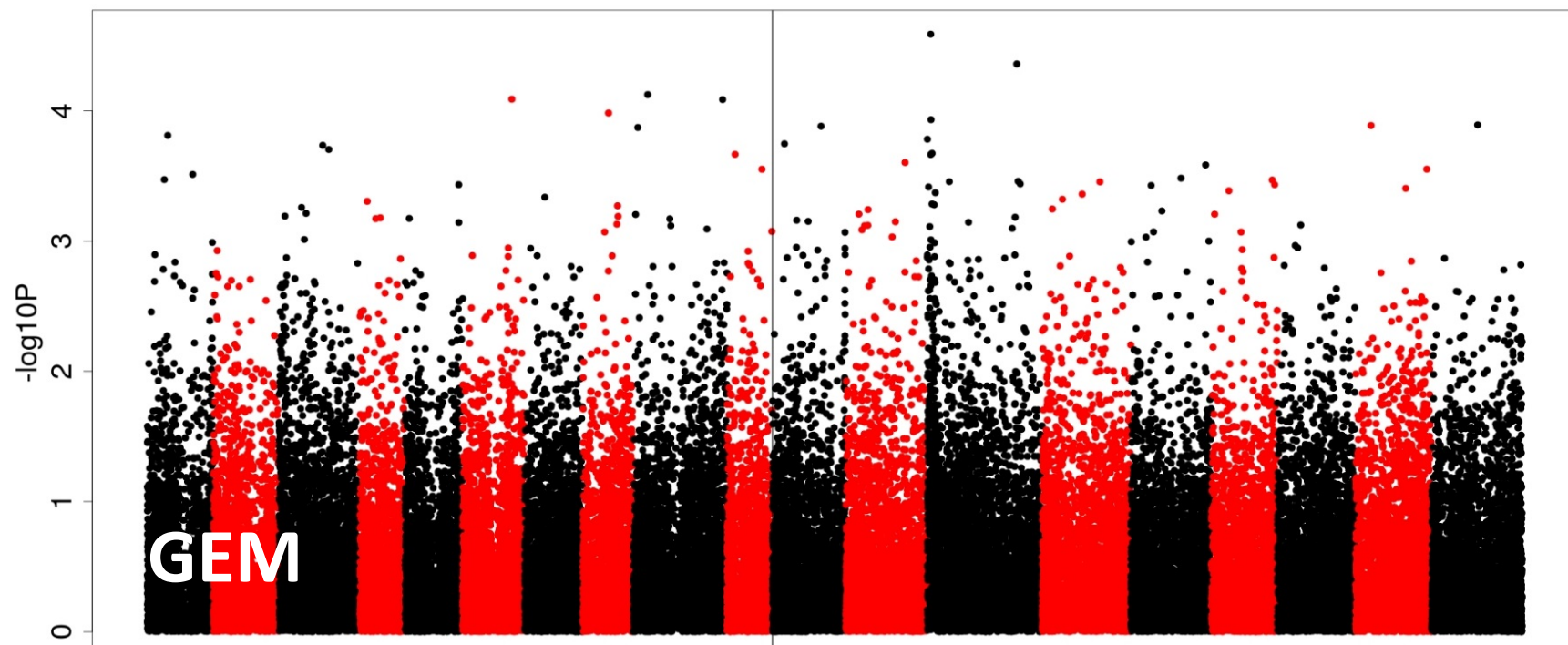
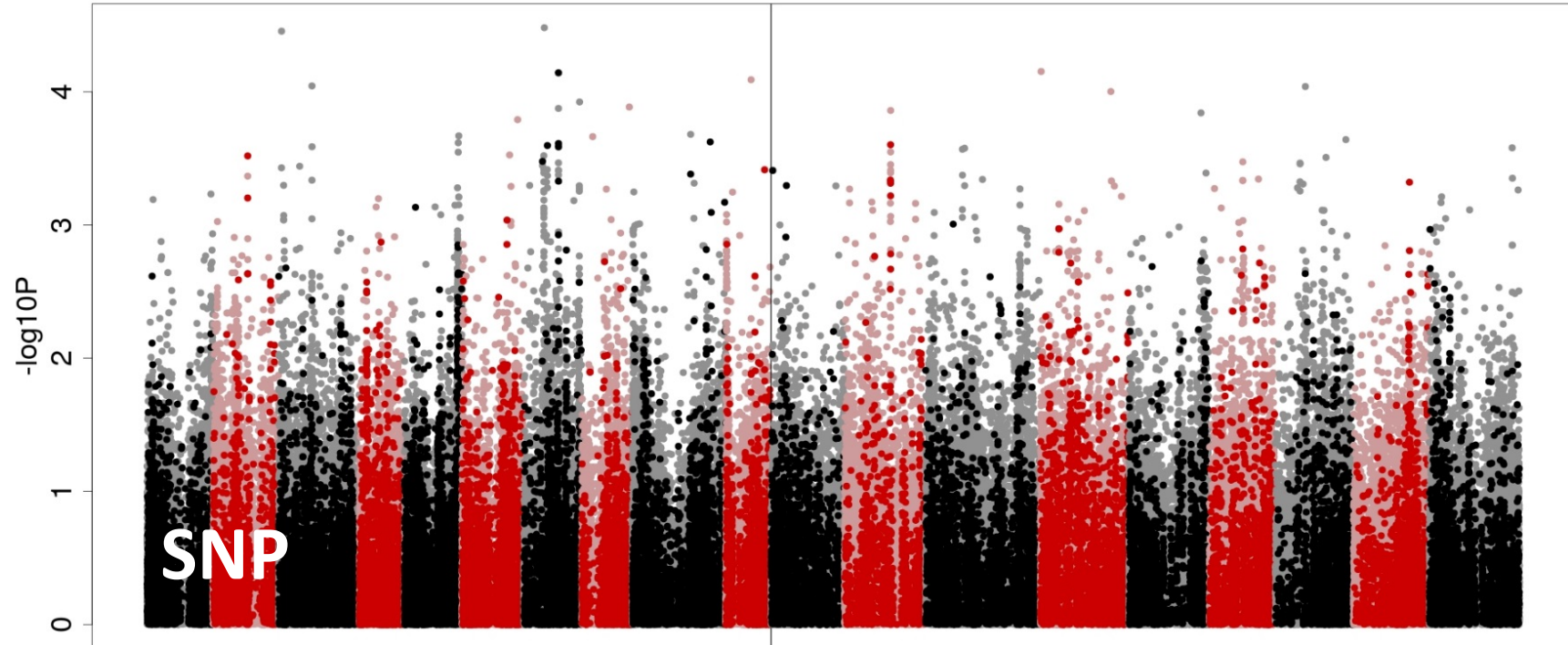
Surface area (cm²/cm³ soil)

82 lines analysed



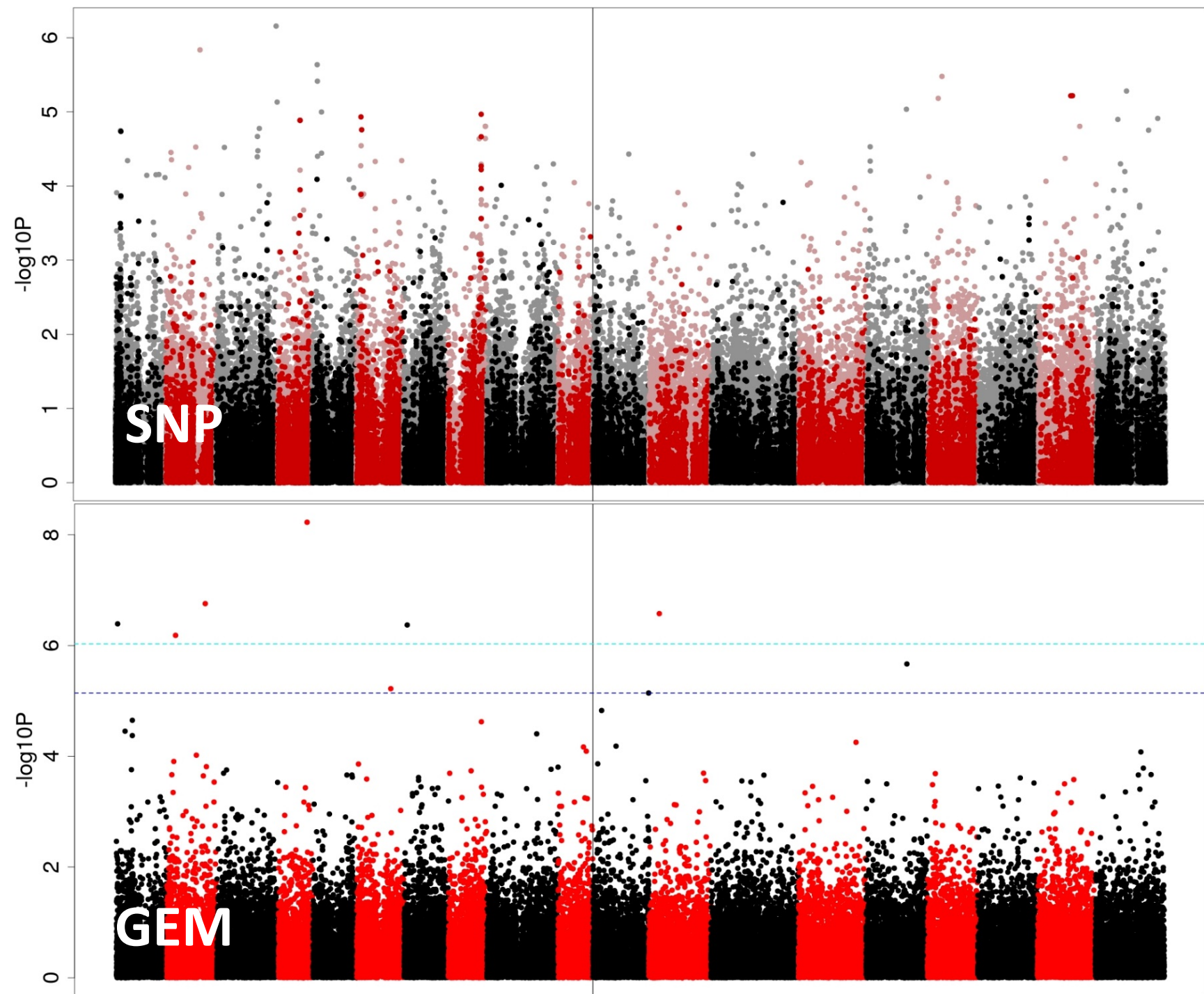
Early vigour (Elsoms 2016)

153 lines analysed



Establishment (Elsoms 2016)

153 lines analysed



Yield (t/ha)

132 lines analysed

