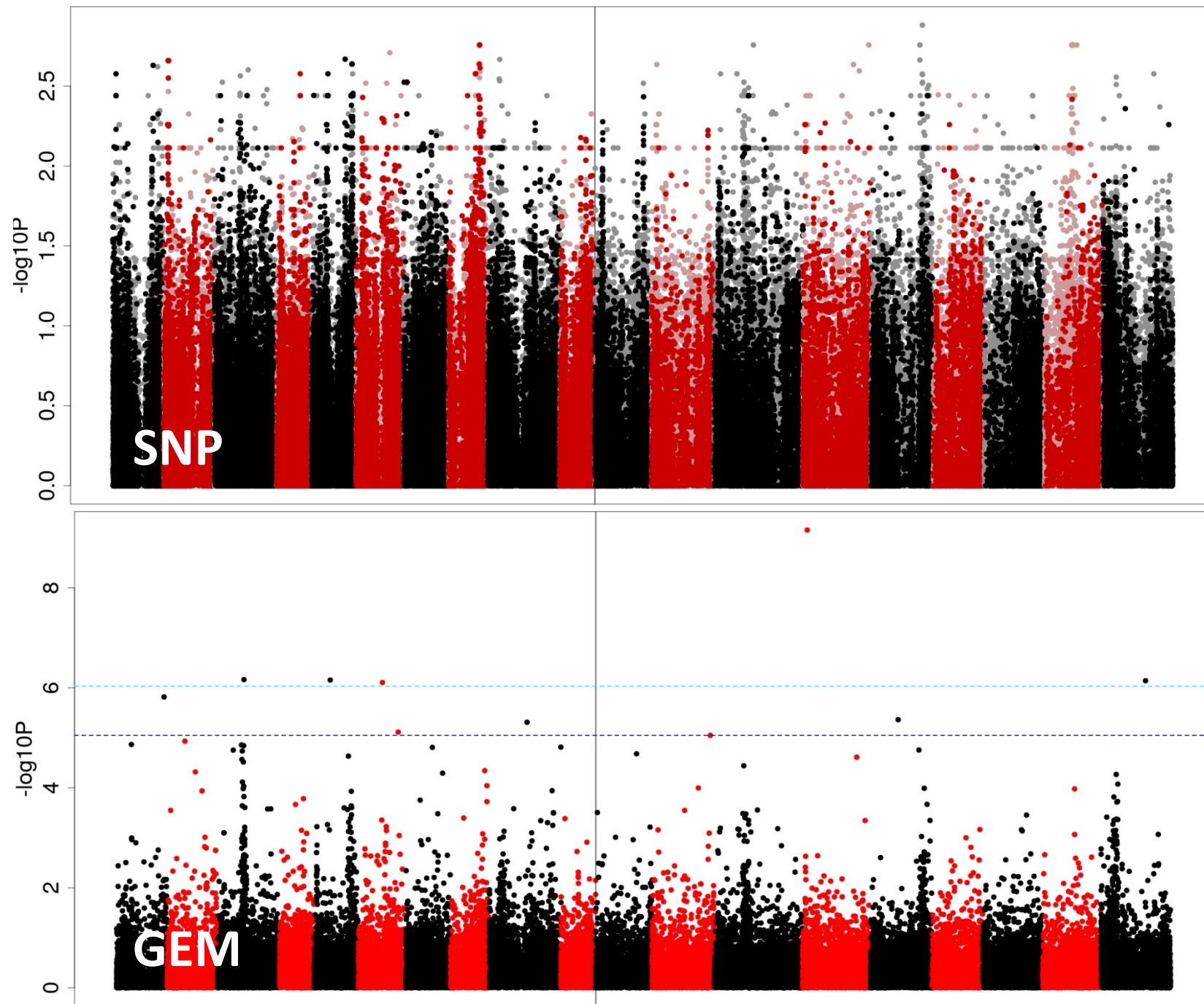


OREGIN Phase4

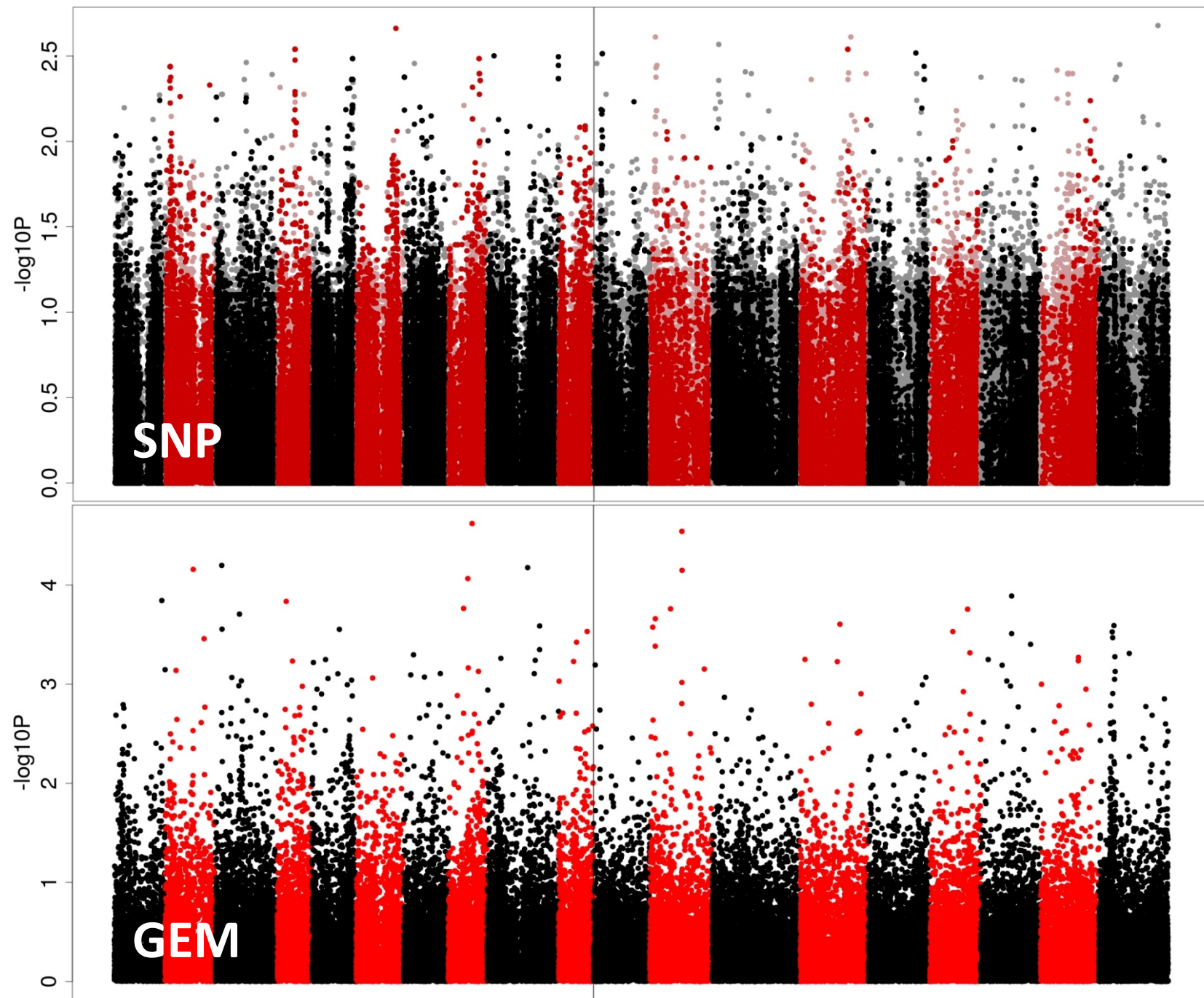
Results of associative genomic/transcriptomic analysis, illustrated by Manhattan plots

Each slide shows the SNP (single nucleotide polymorphisms) and GEM (gene expression markers) for one trait, run on 28 lines. The notes for each slide contain the file names of the Manhattan plots for SNP and GEM. Slides are ordered as indicated in the “results.slide.no” column of the readme file. Dotted lines on Manhattan plots: purple, 5% FDR (false discovery rate); light blue, Bonferroni-corrected 5% FDR.

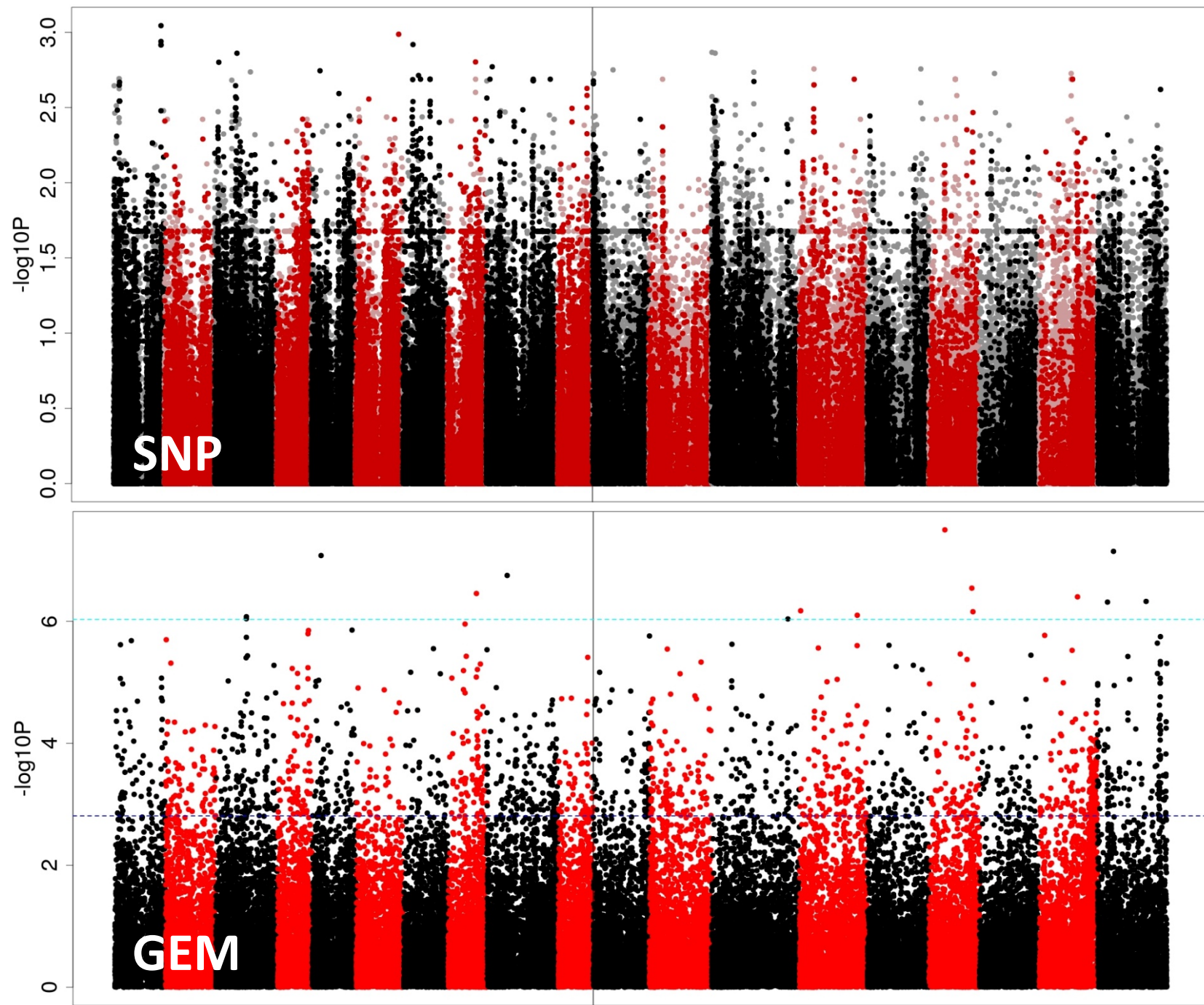
Combine
Moisture.
stdN.
9.9.7mBy2m



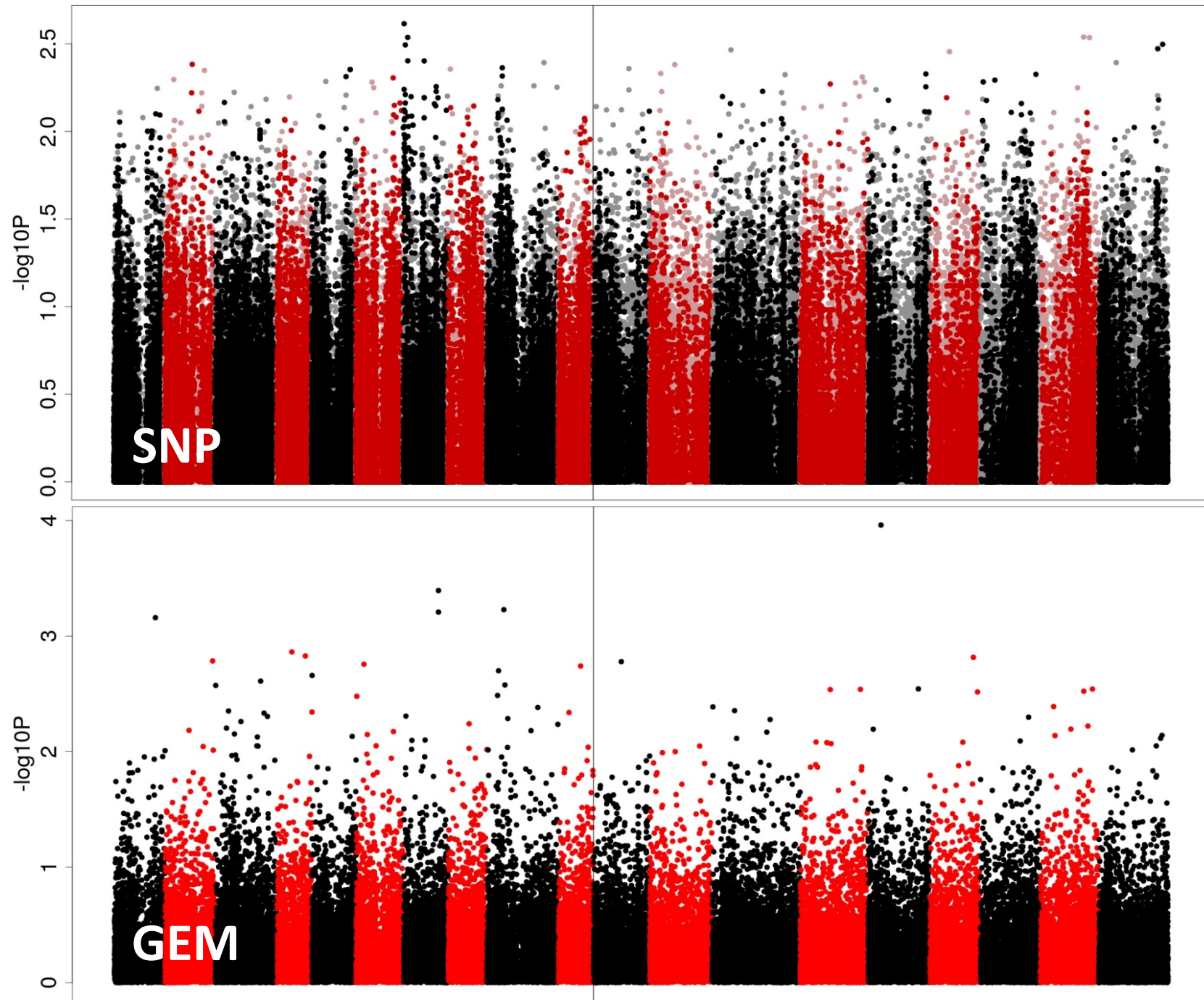
Combine
Moisture.
LowN.
9.9.8mBy2m.



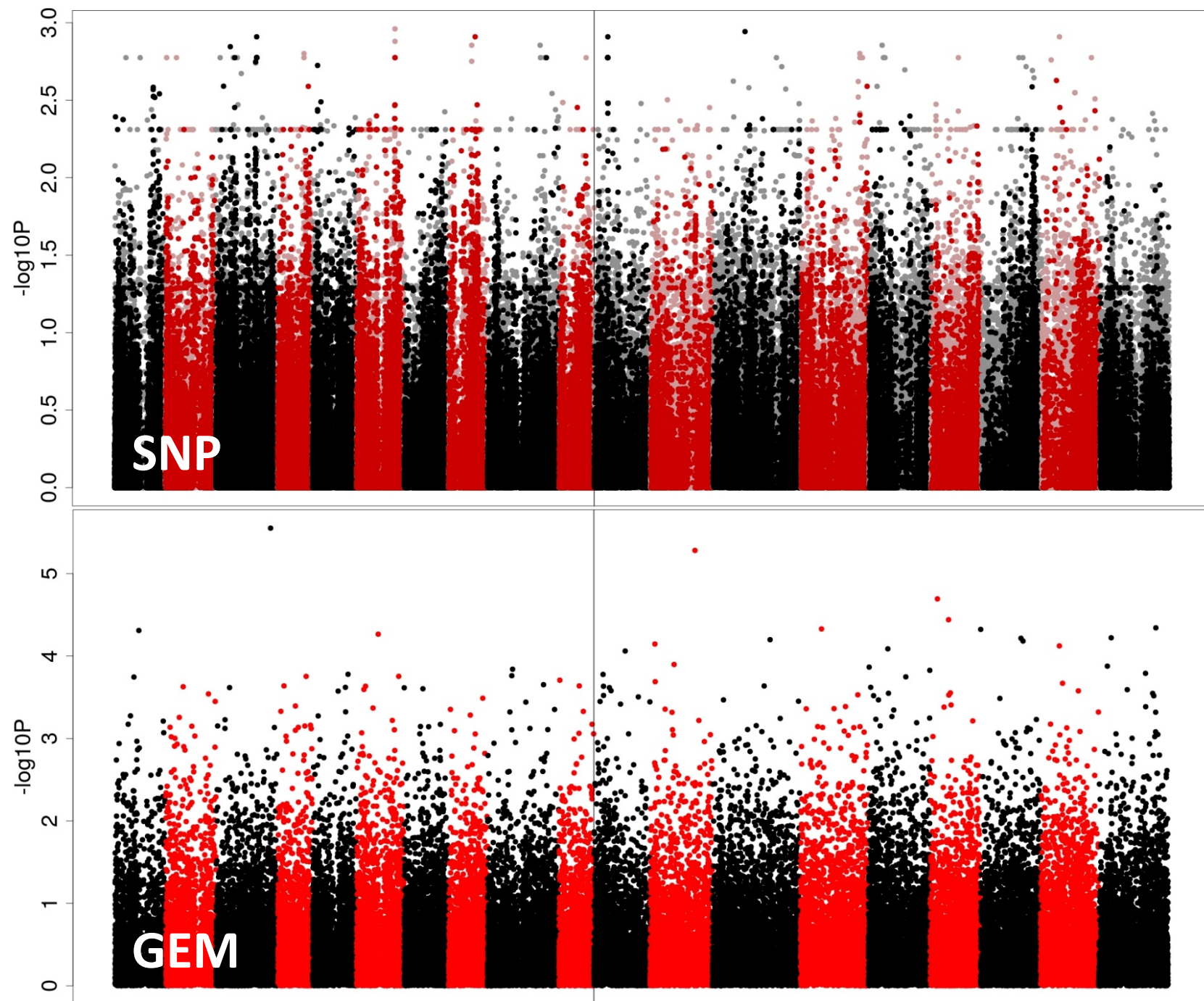
cor..yield



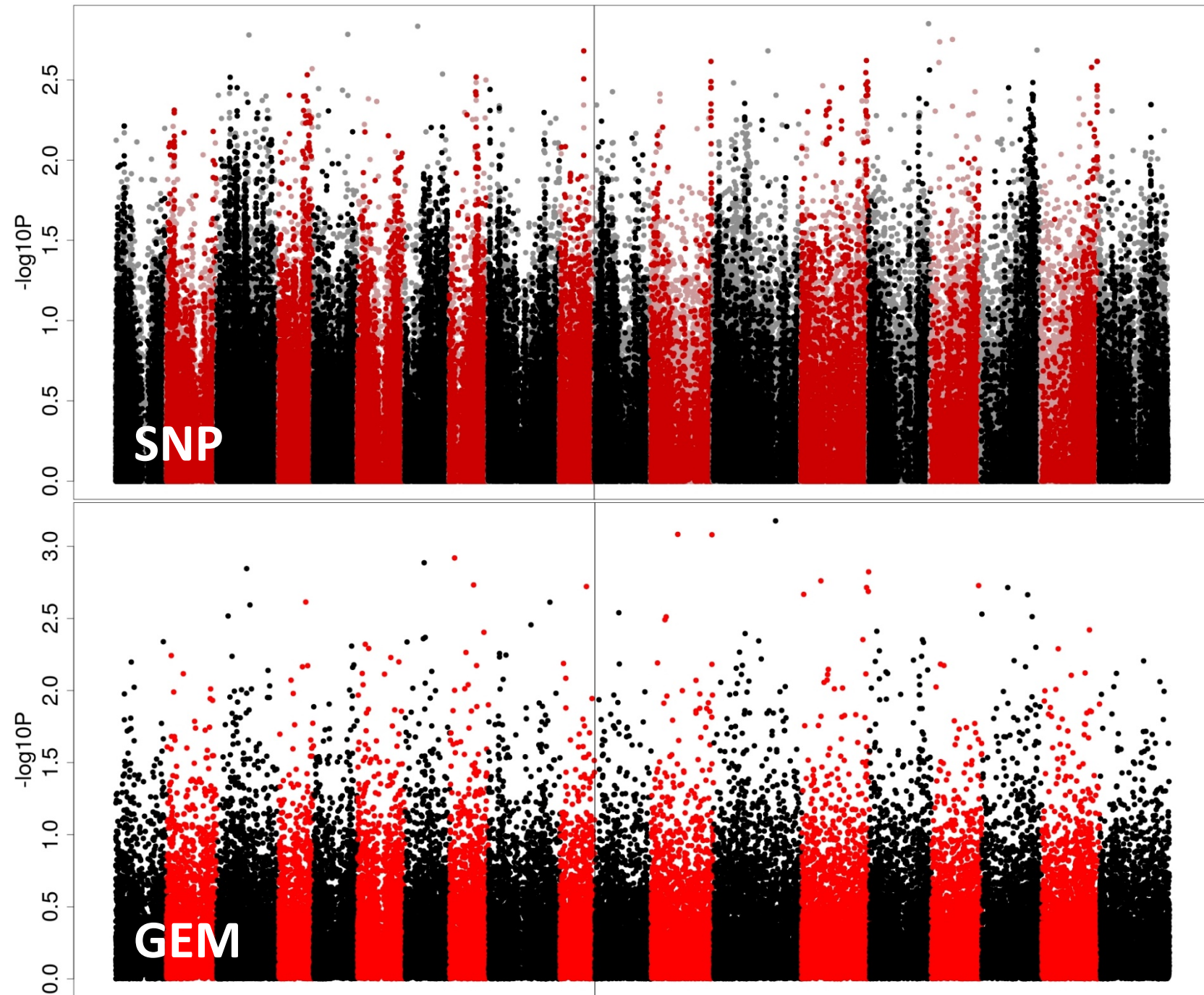
Crop.
Height.
cm.6.3.
LowN



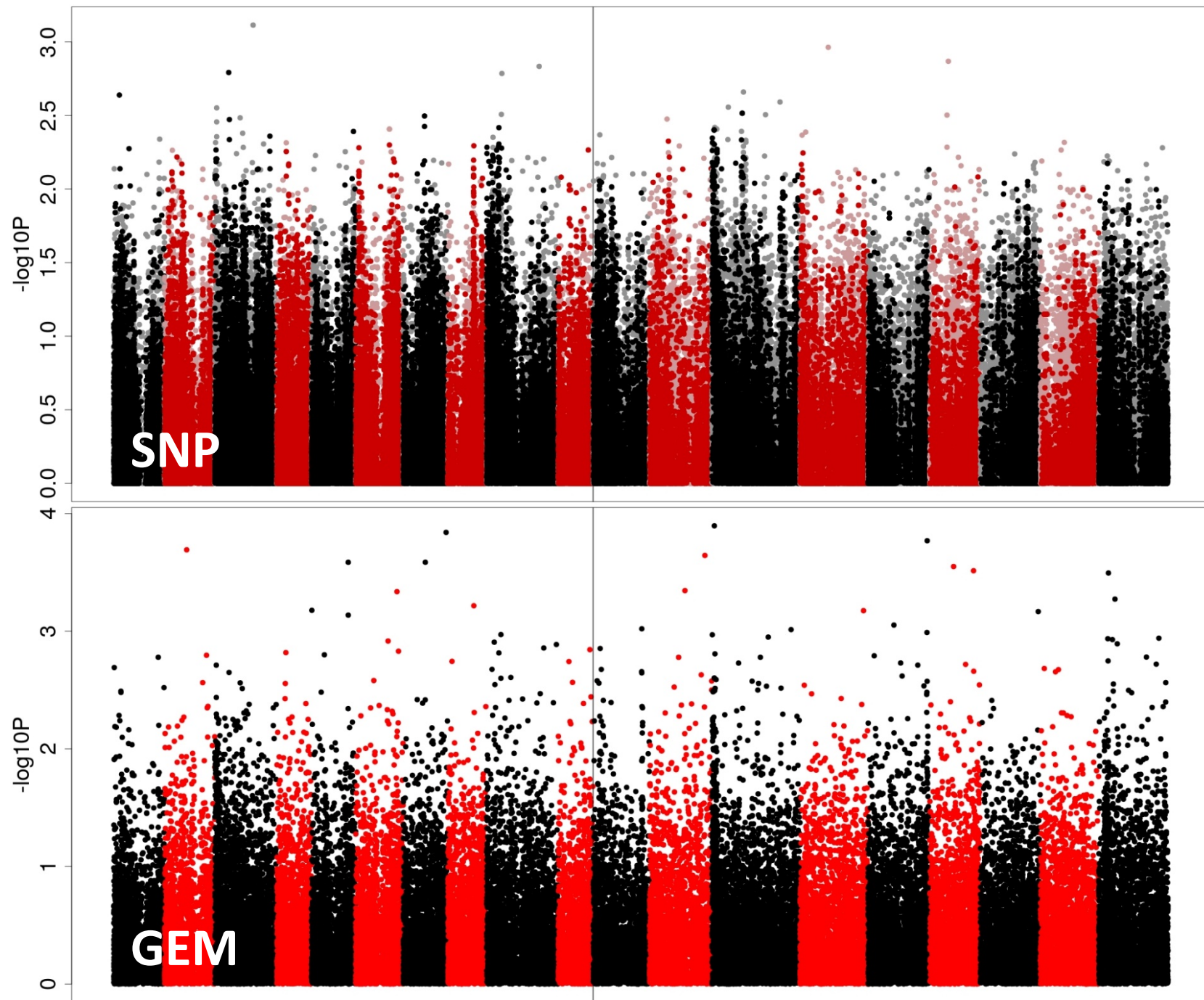
Crop.Height.
cm.
6.3.
NoFungStrp



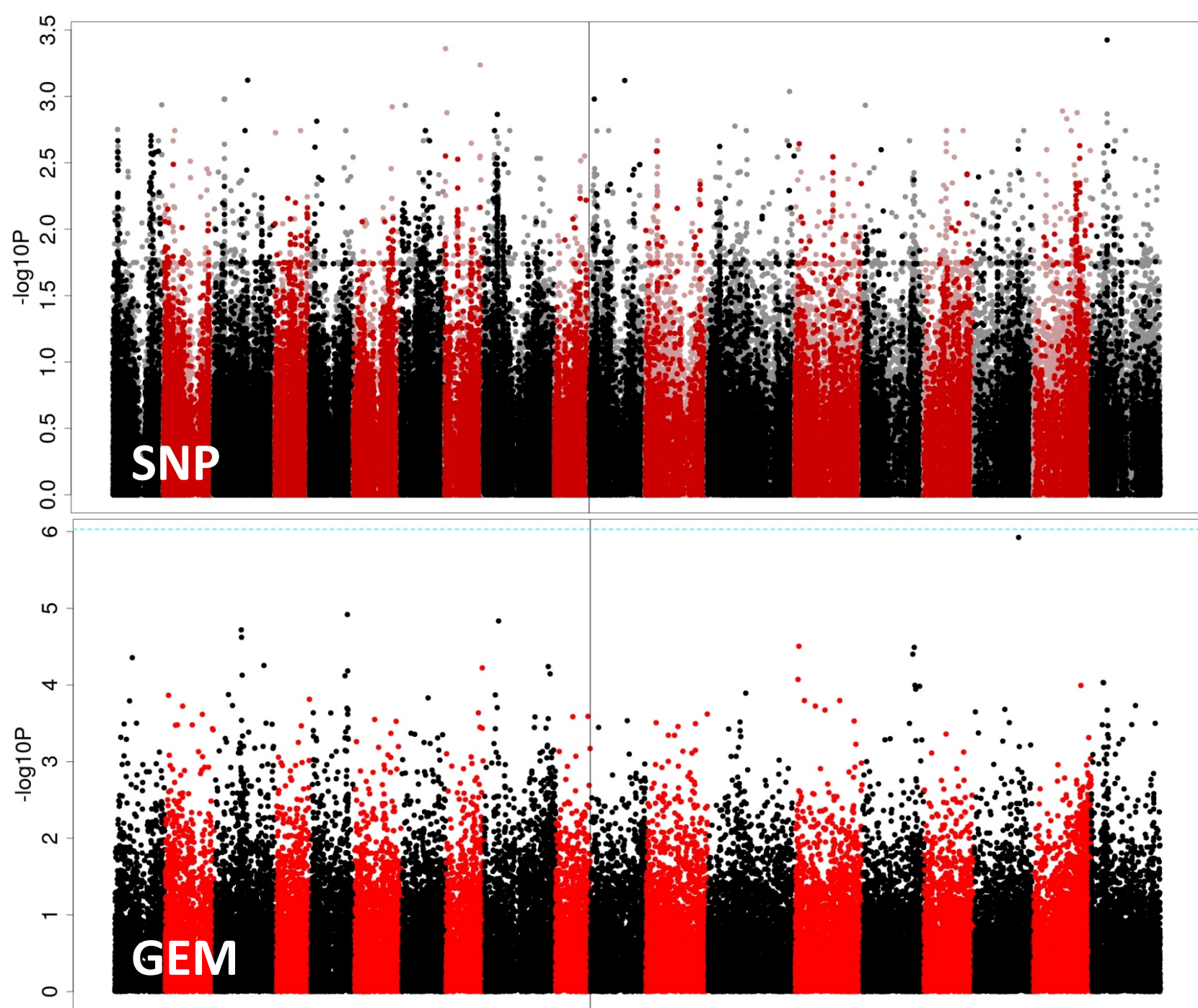
Crop.Height.c
m.
6.3.
StdN



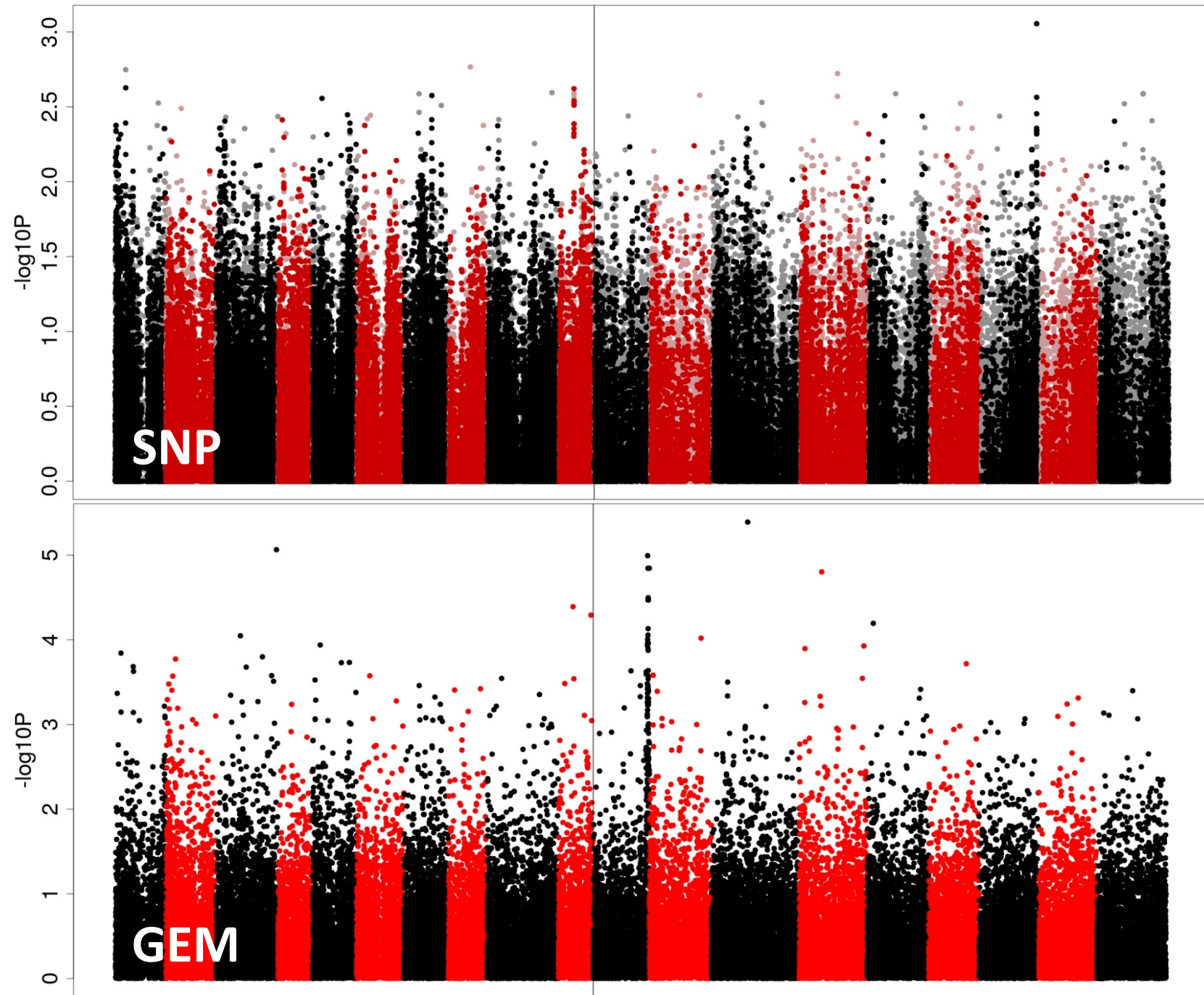
Dry Matter Content Perc. LN



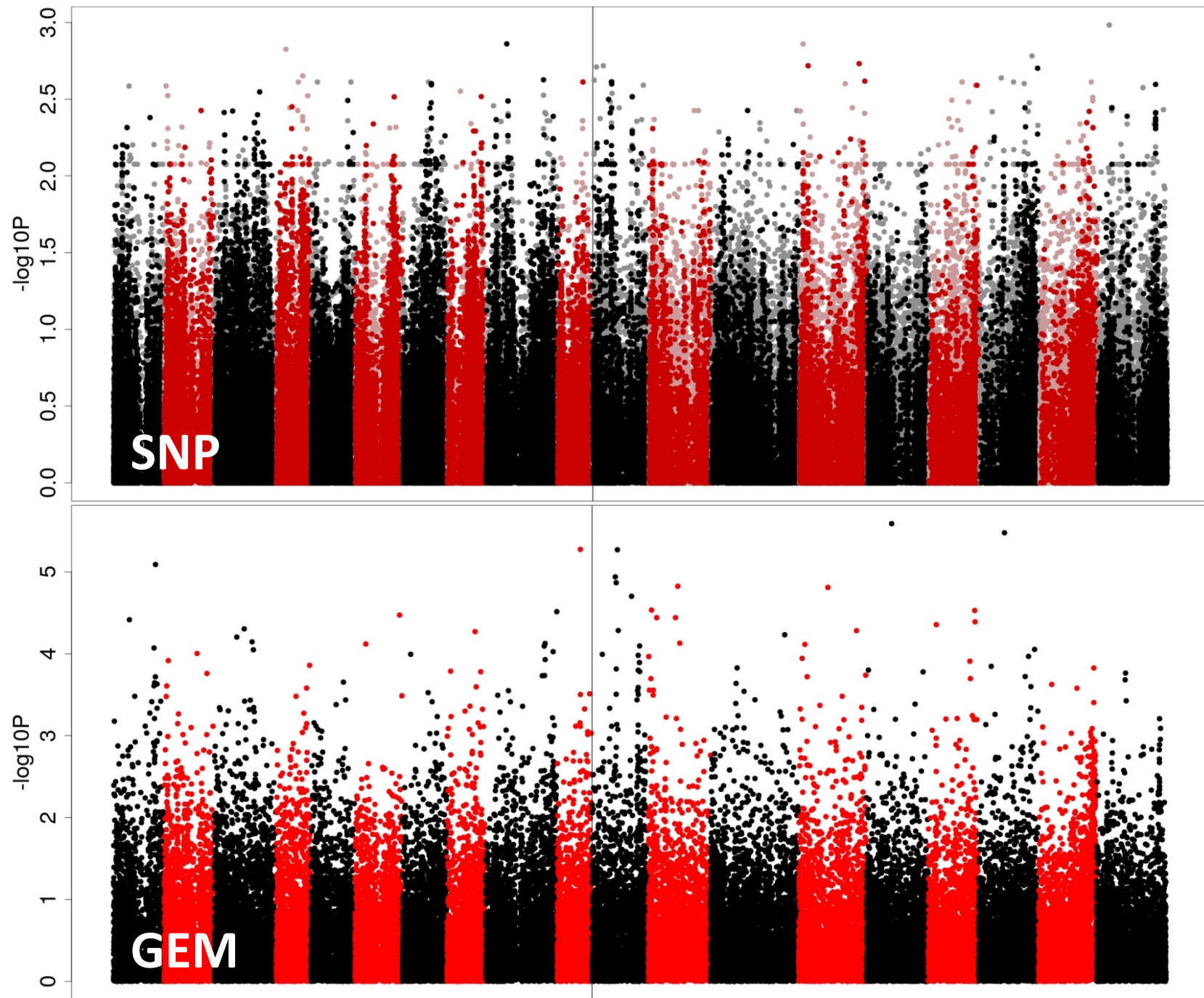
Dry Matter Content Perc. StdN



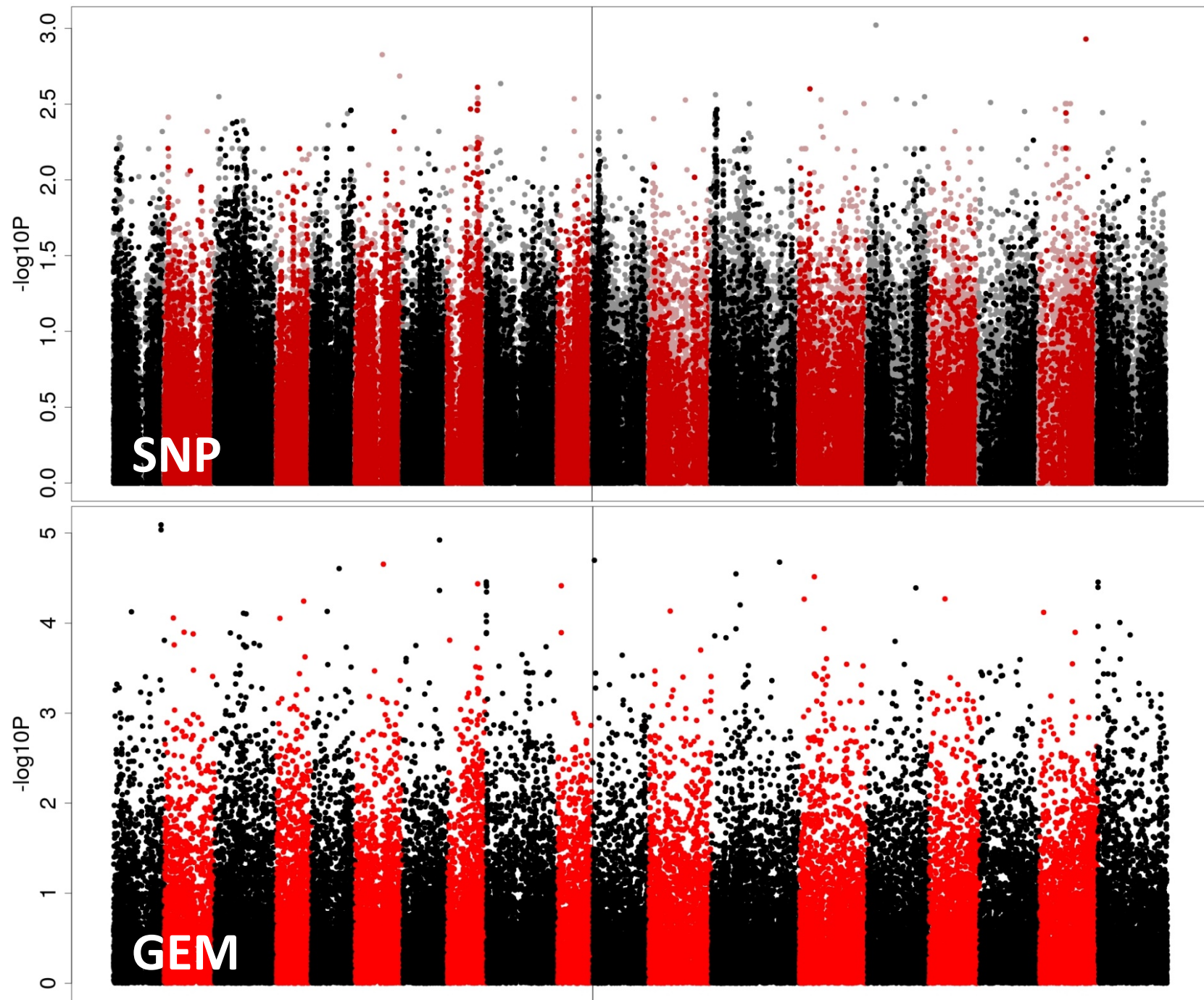
e..vigour



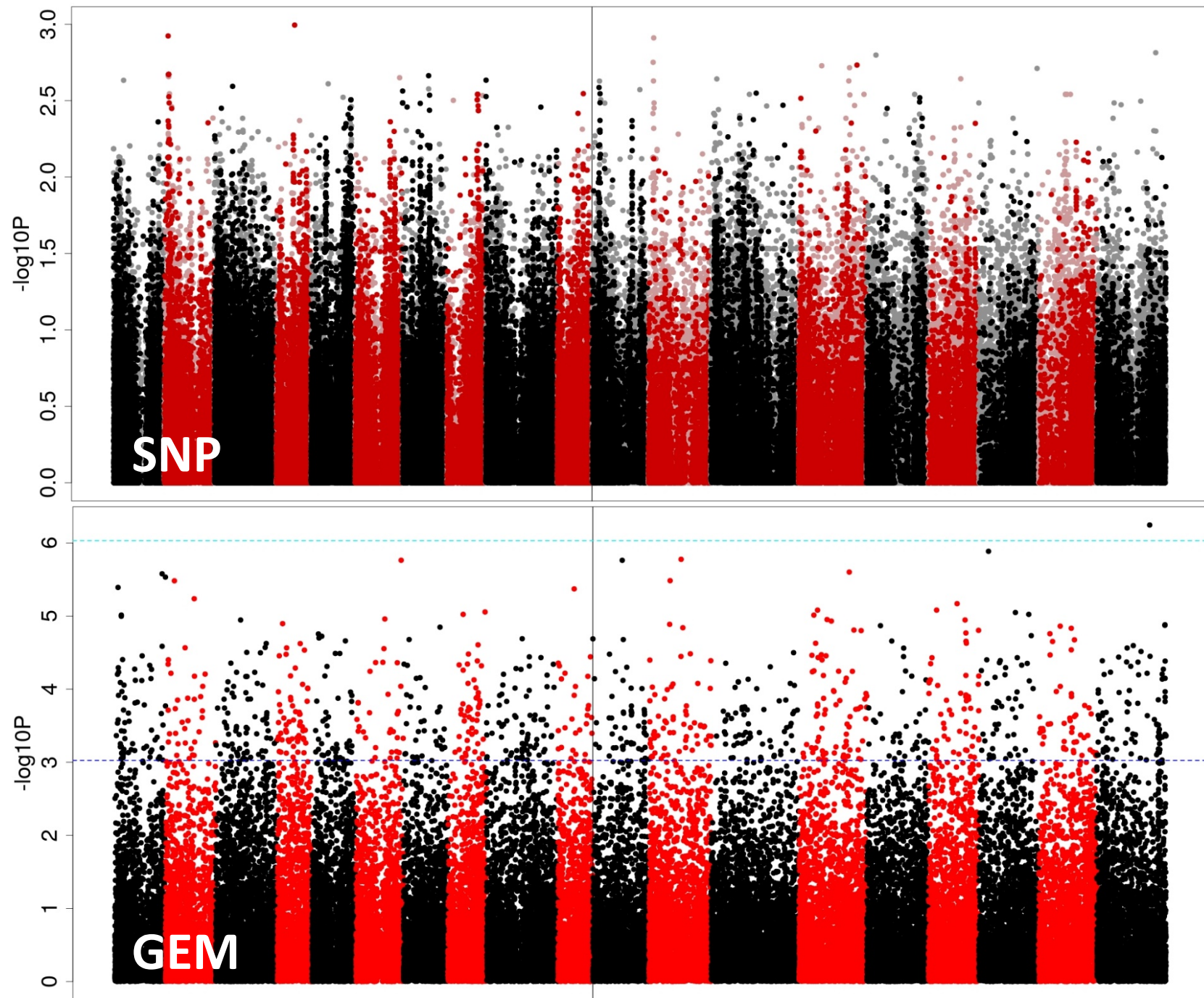
Emergence..
1to9..
1.0.



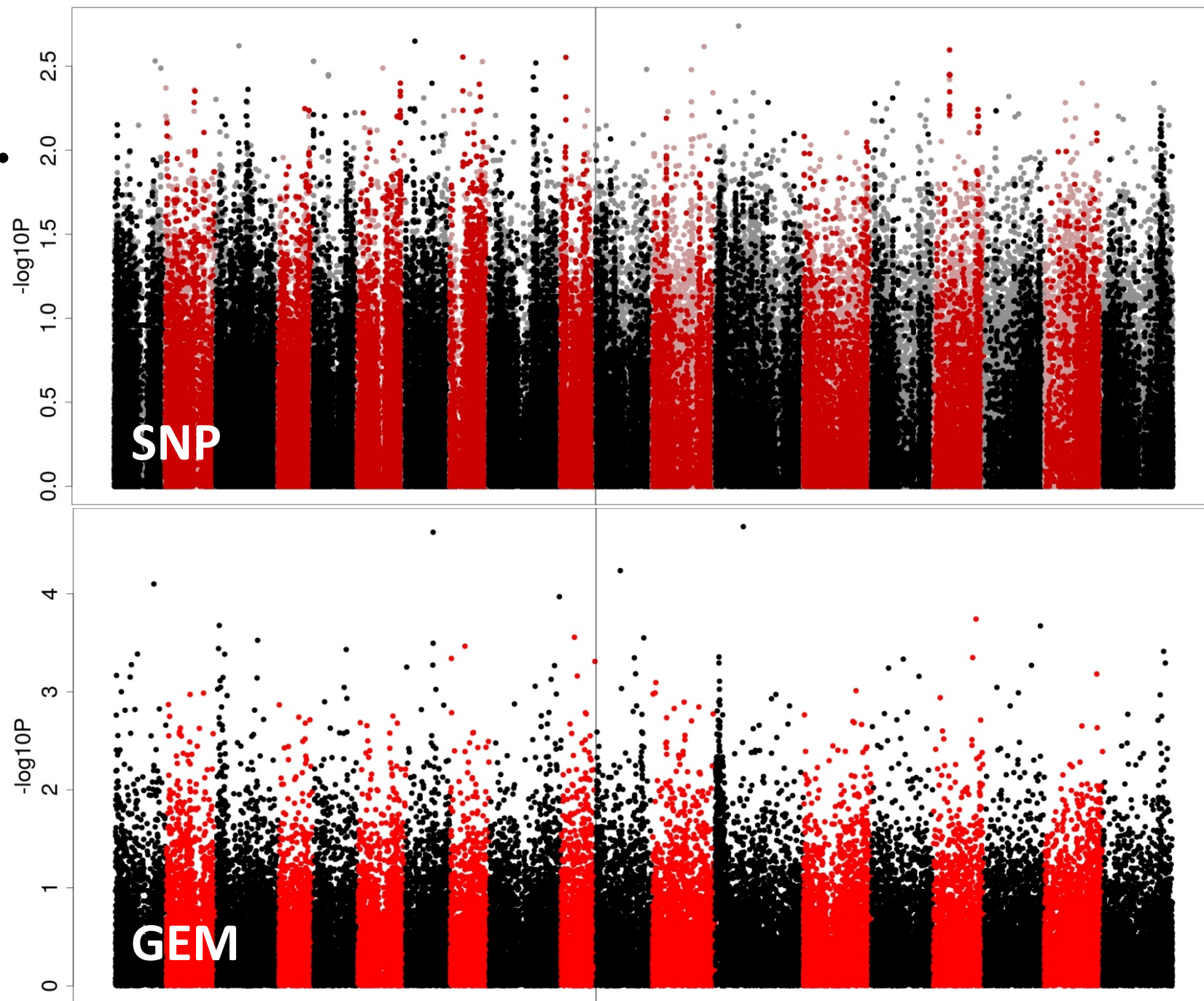
Est.
Yield..
stdN..
perHa.



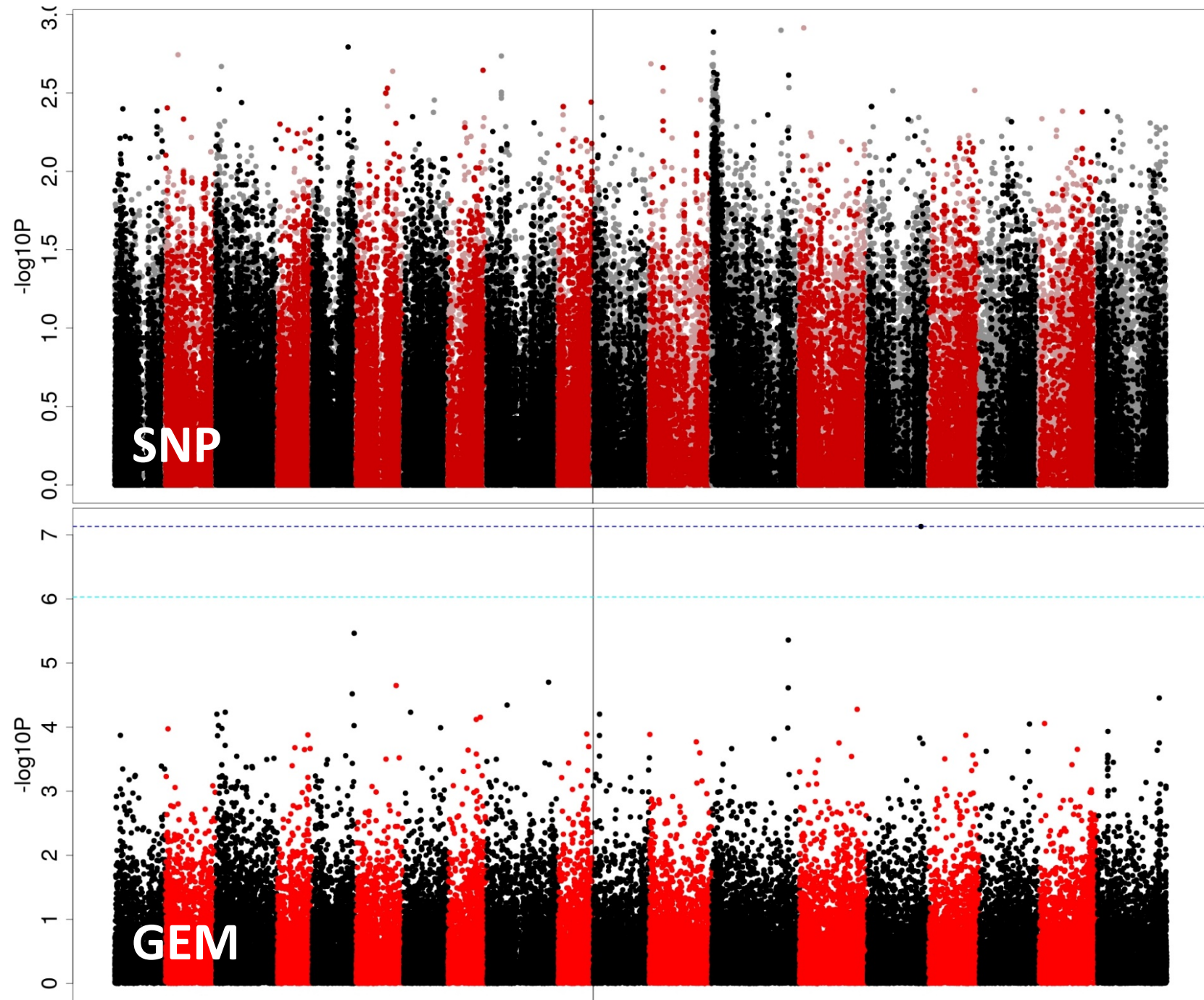
Est.
Yield.
LowN.
perHa.



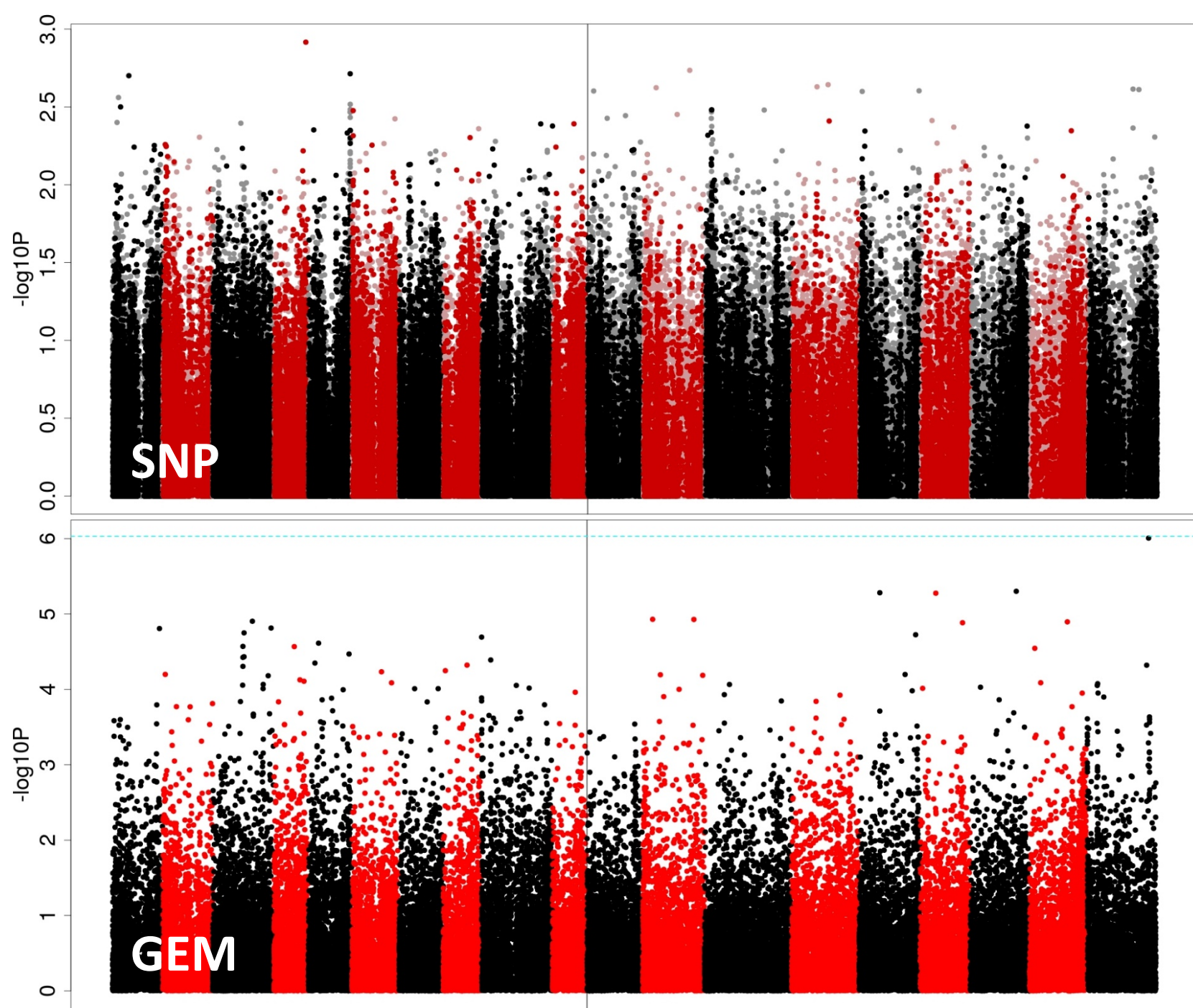
Establishment.
1to9.
1.6to1.7.



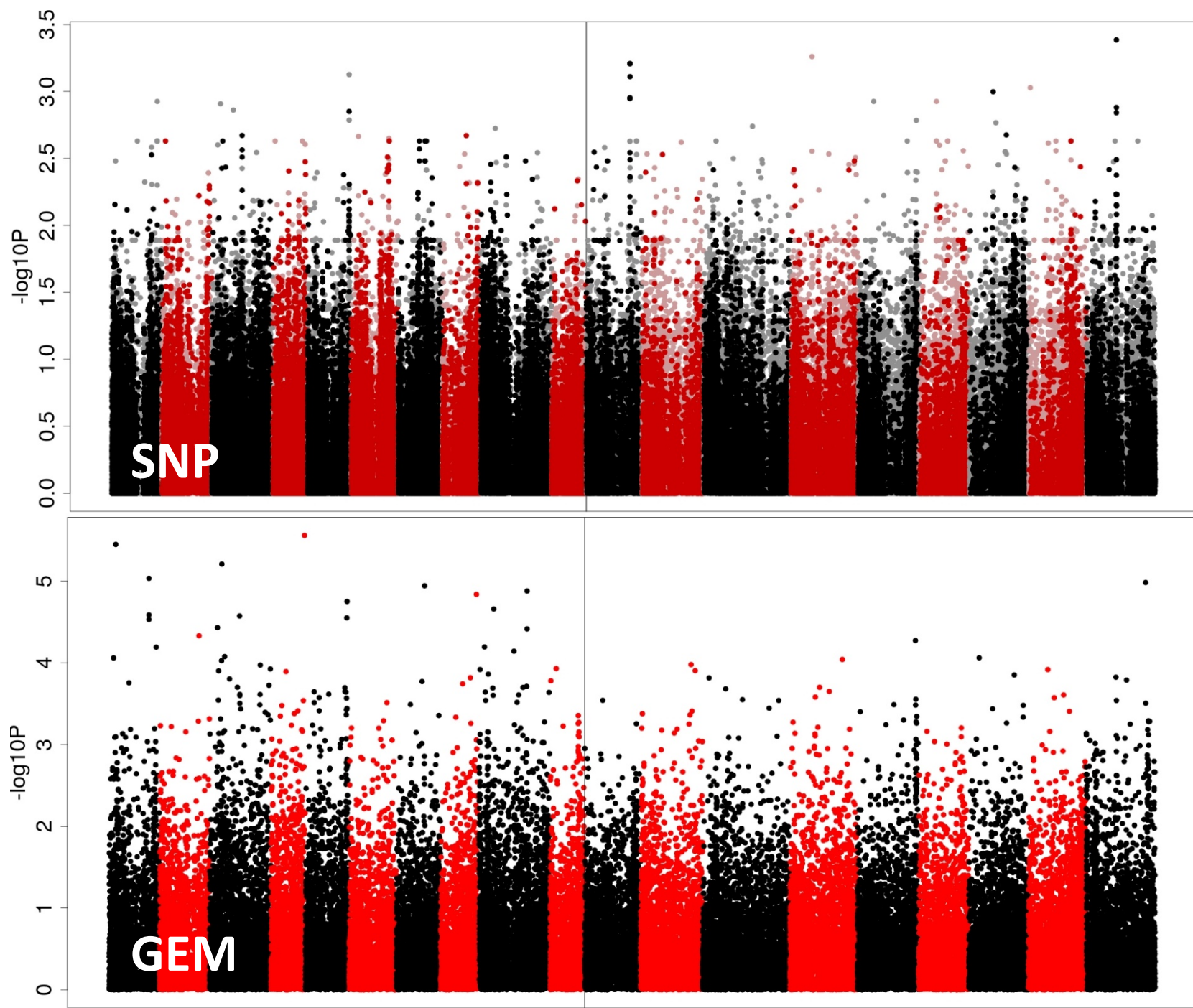
flowering.



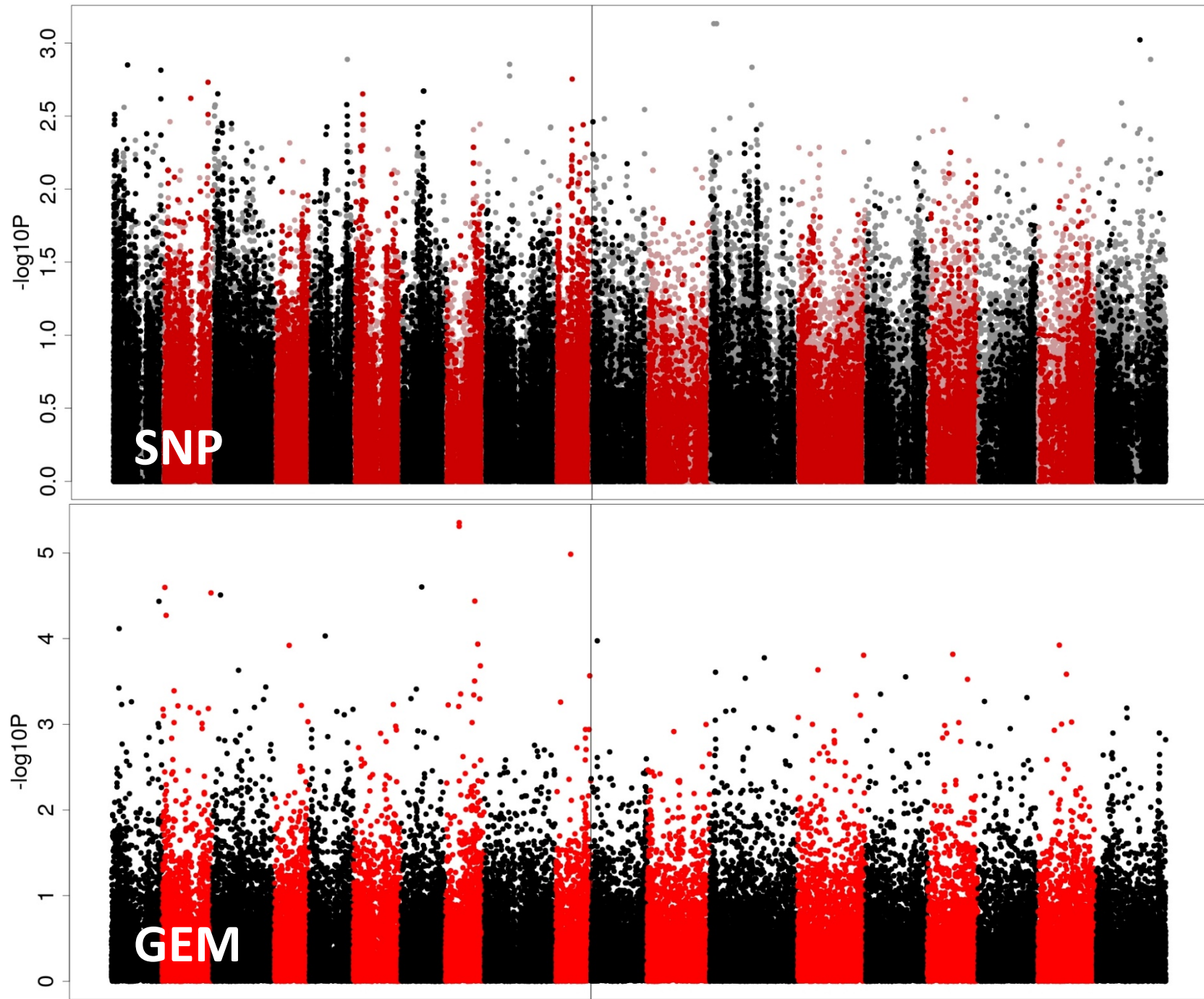
Flowering.
Score.
1to9.
3.5to4.5.



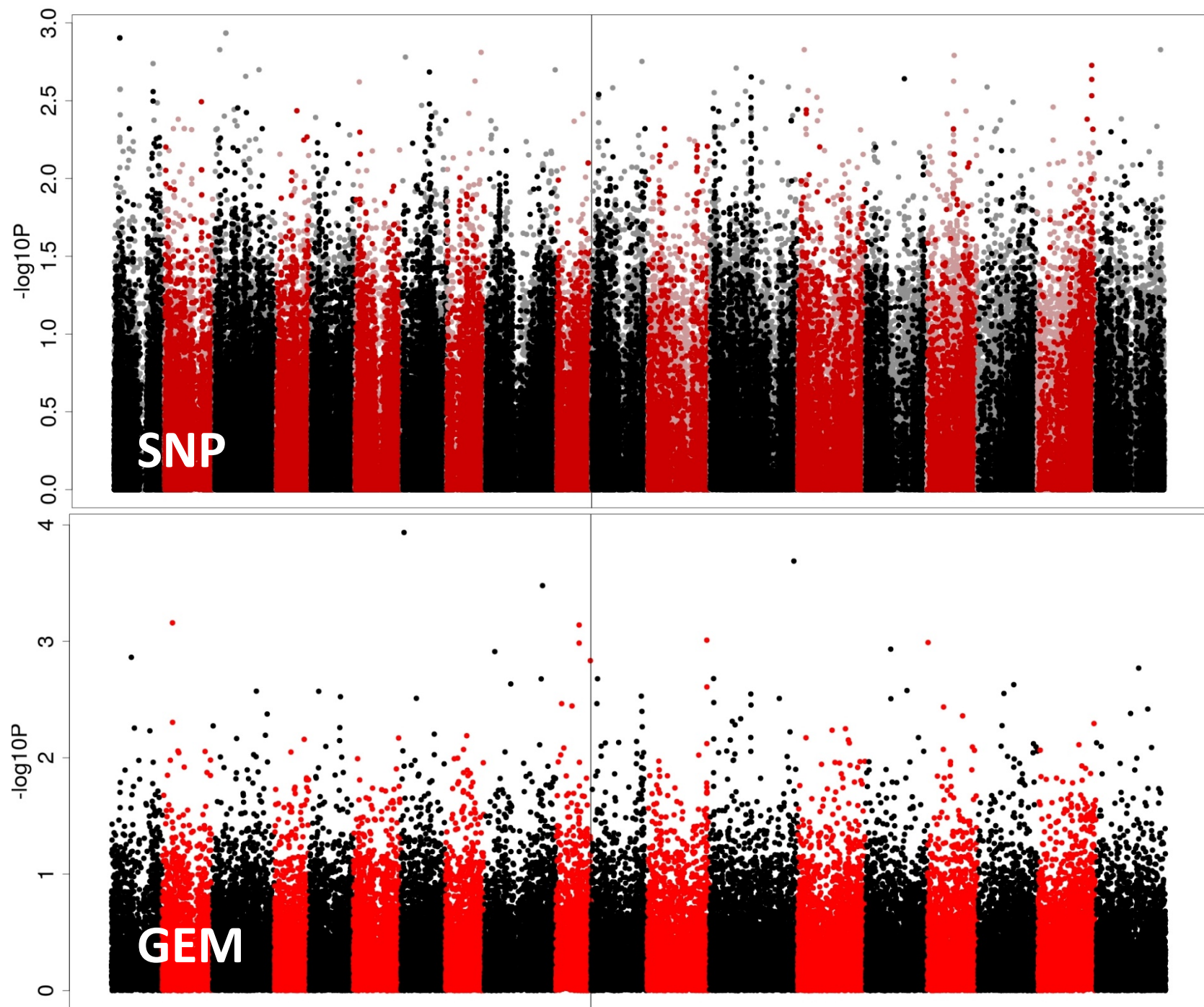
Flowering.
Score.
1to9.
4.7to4.9.



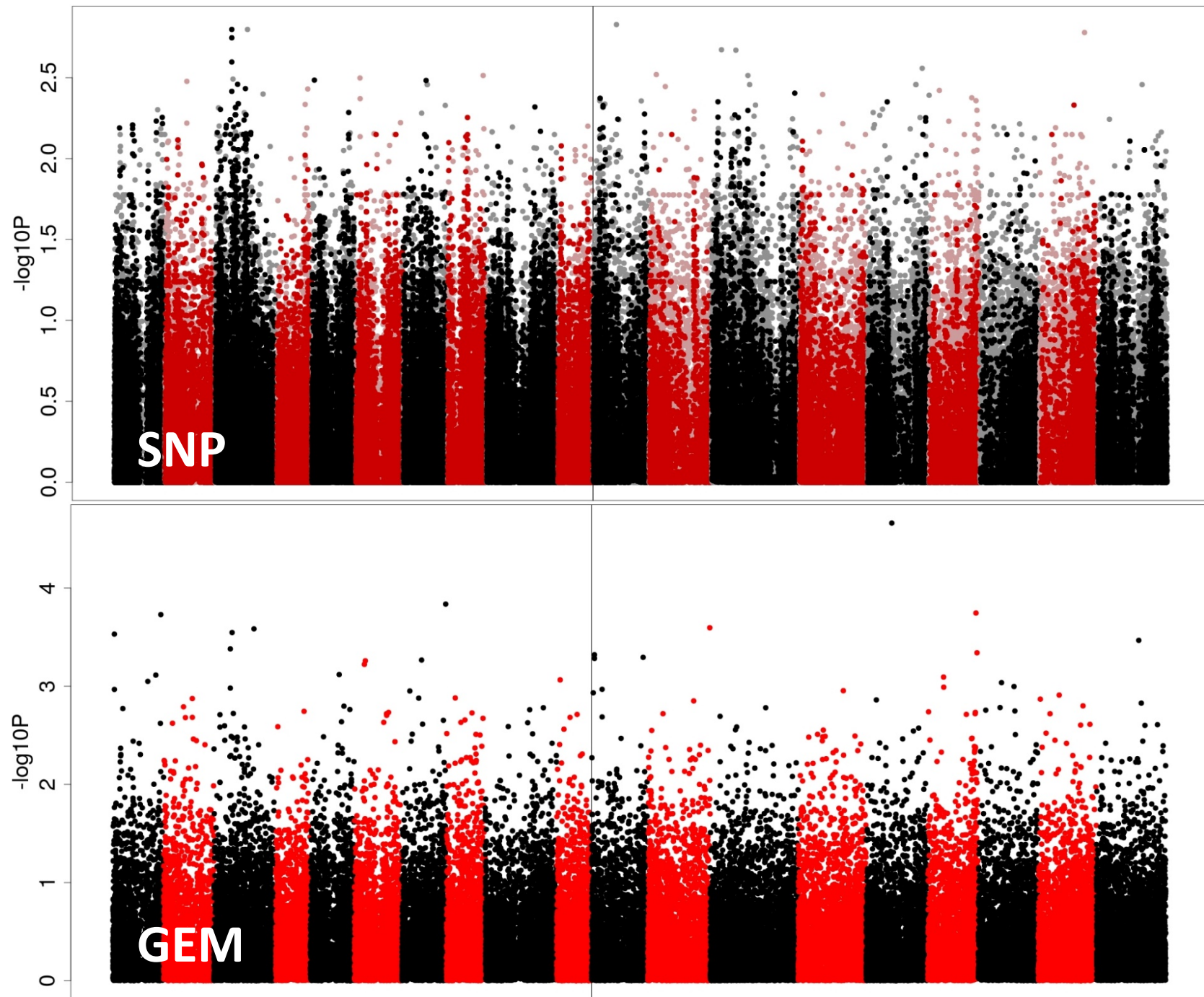
height.



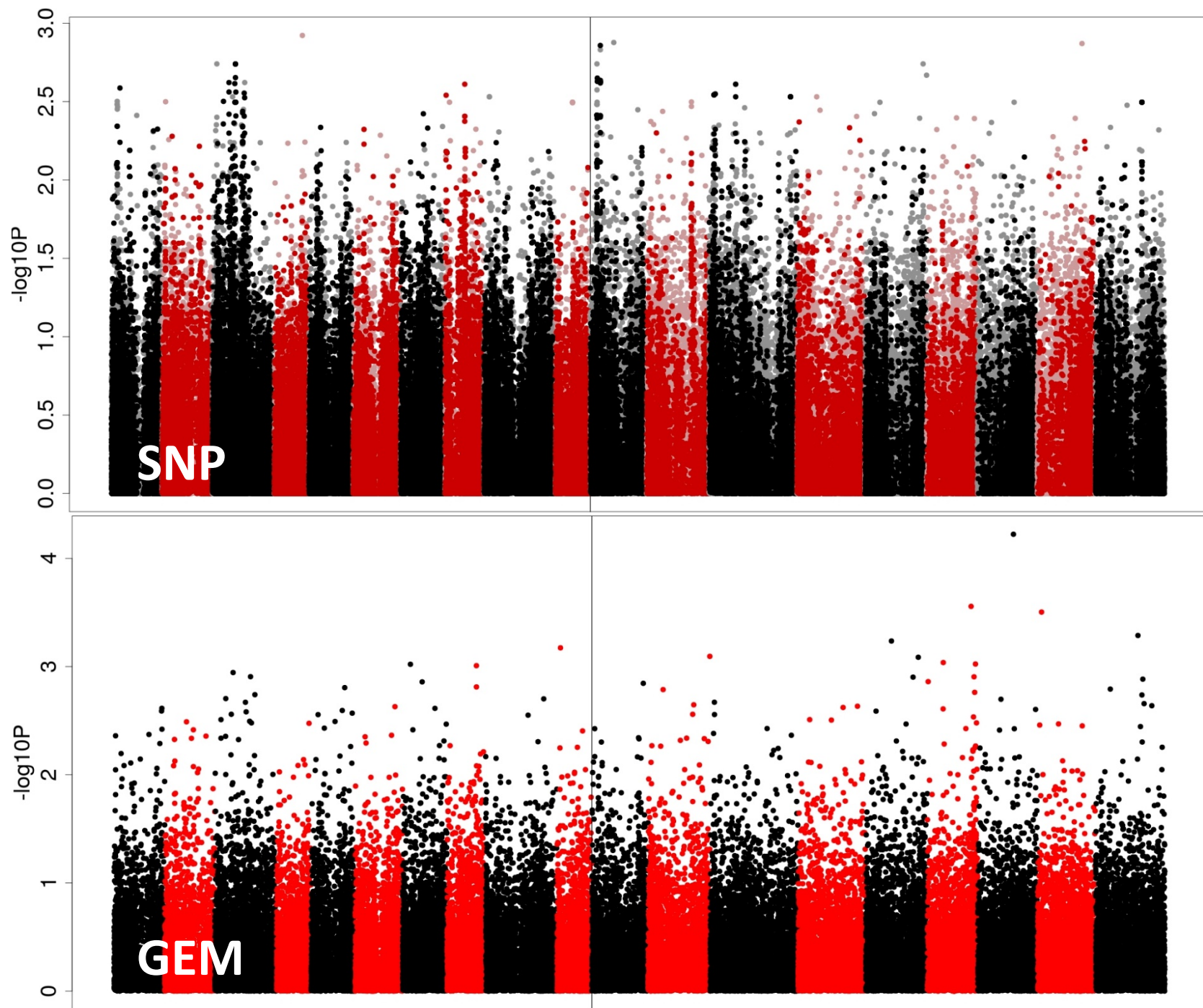
Maturity.
6.4to6.9.



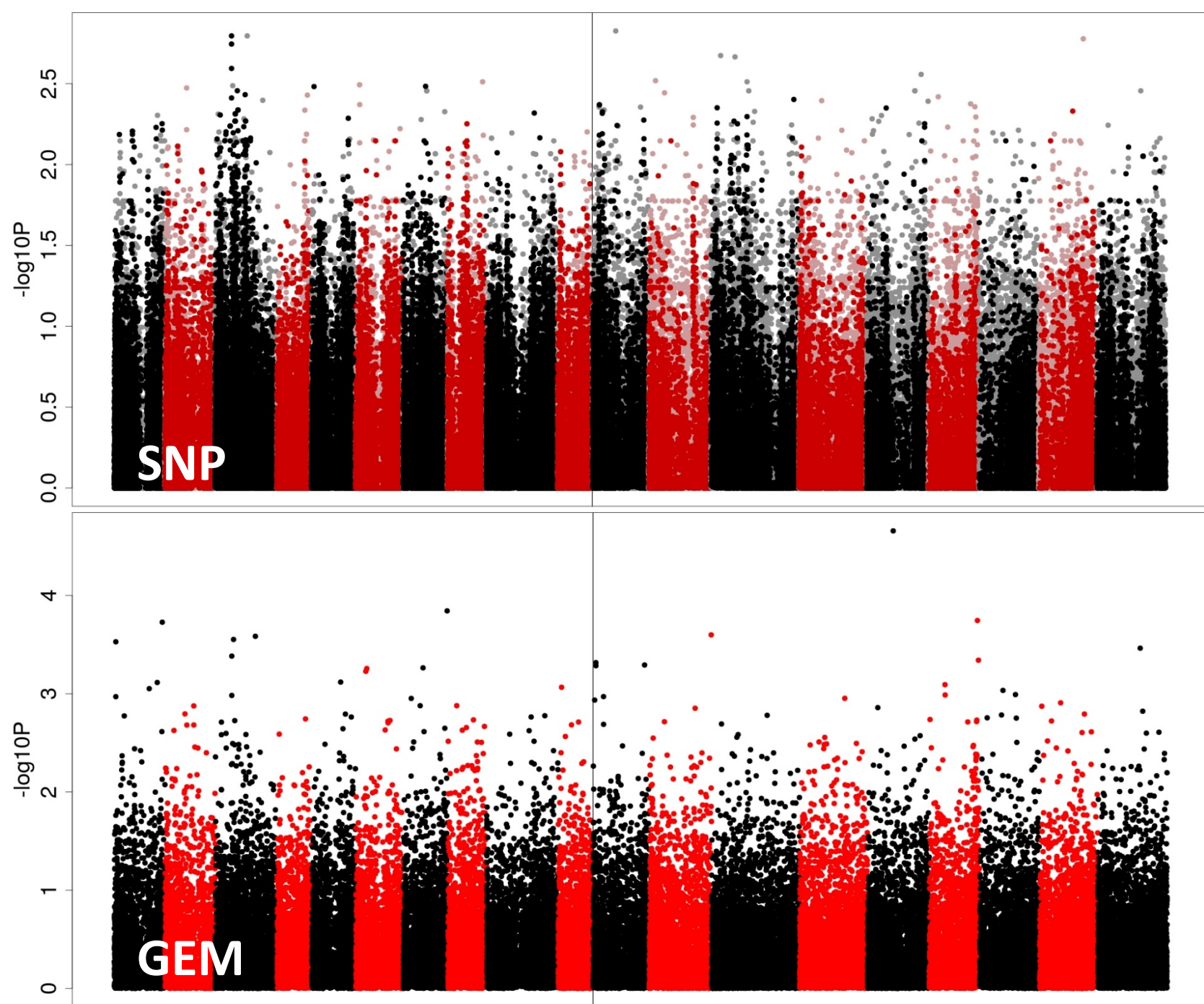
OilContent..
perc.dmb.



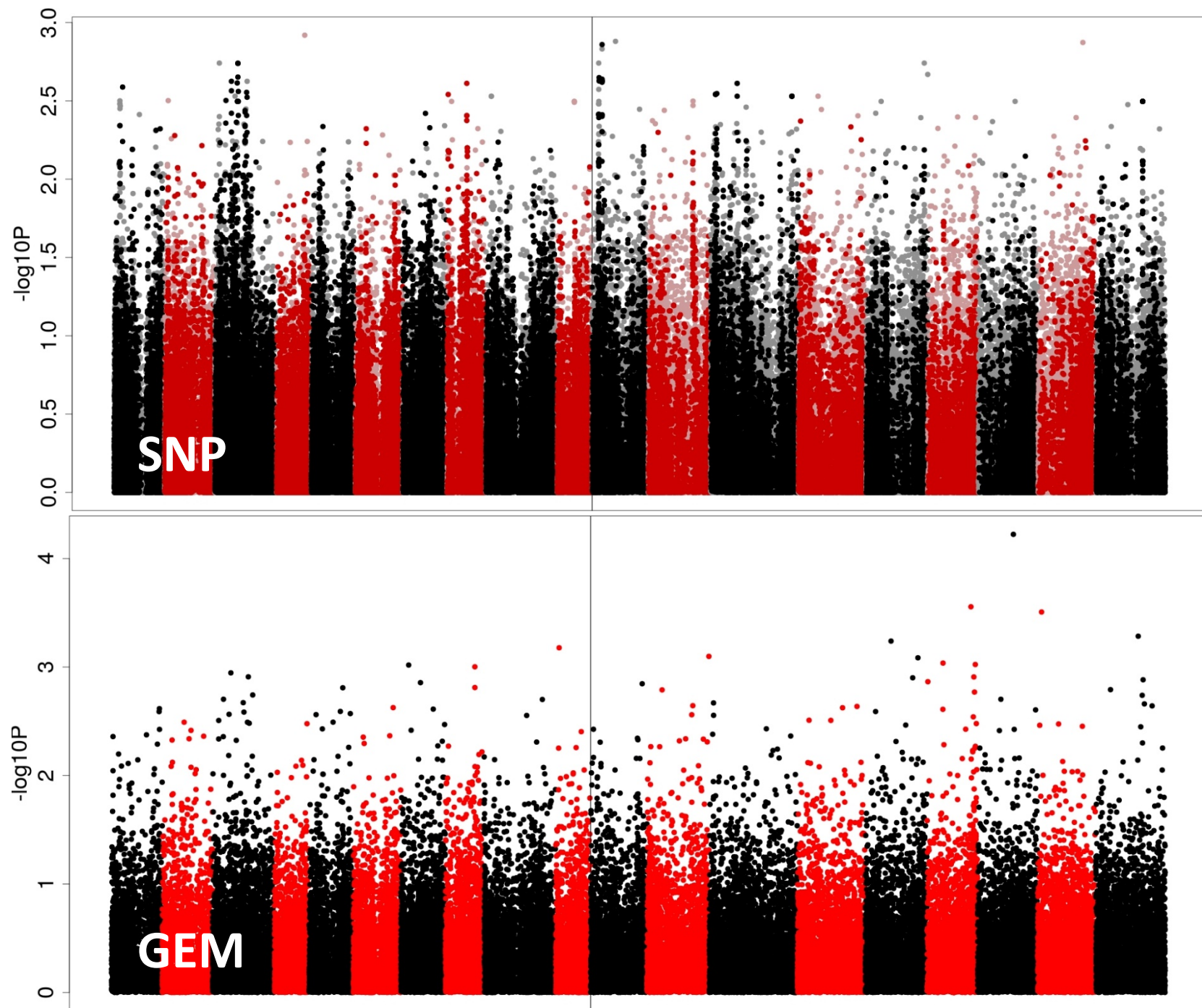
Oil Content
Perc.
At
9.perc.moist.



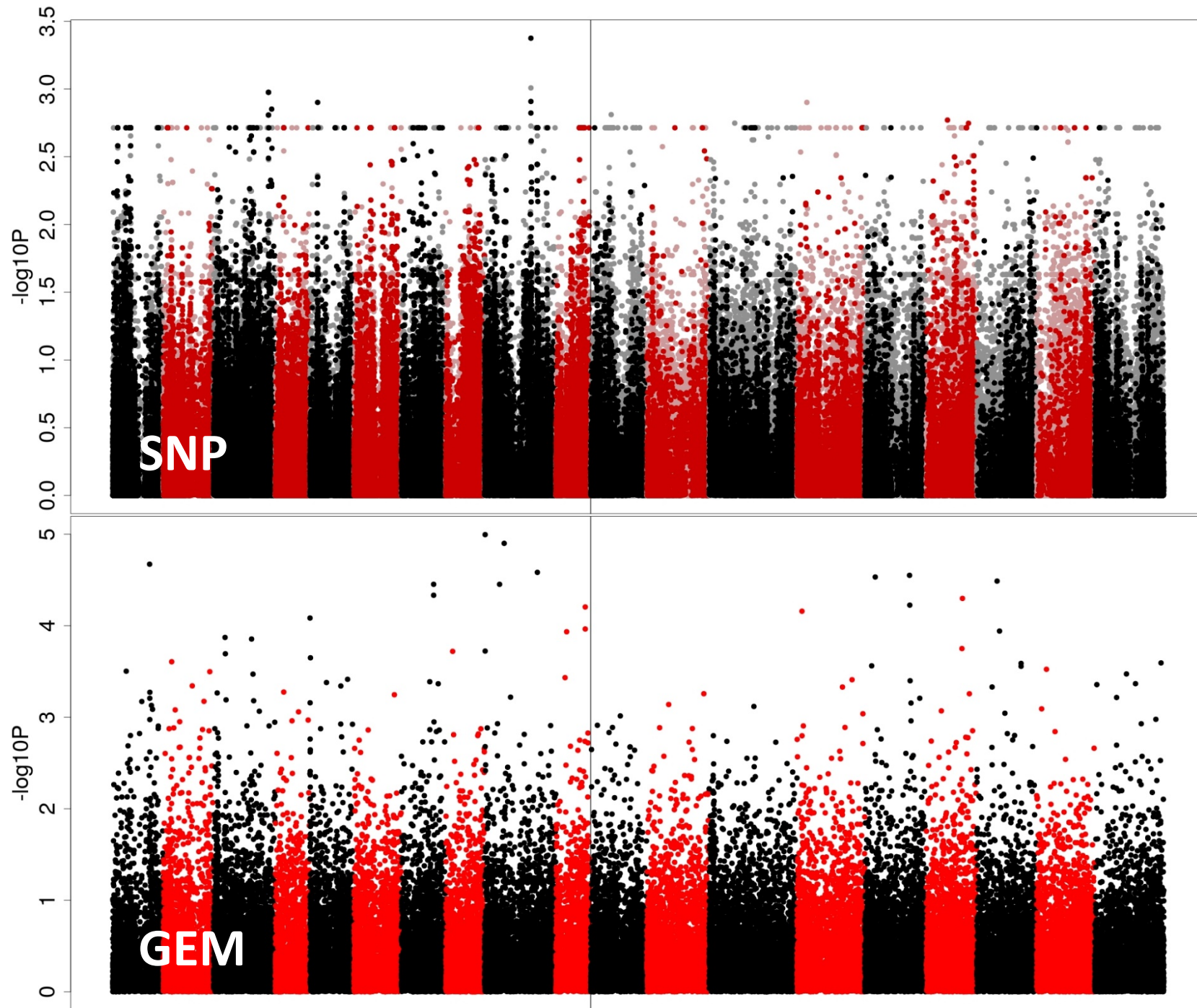
OilContent
Perc at
9perc.
moisture.



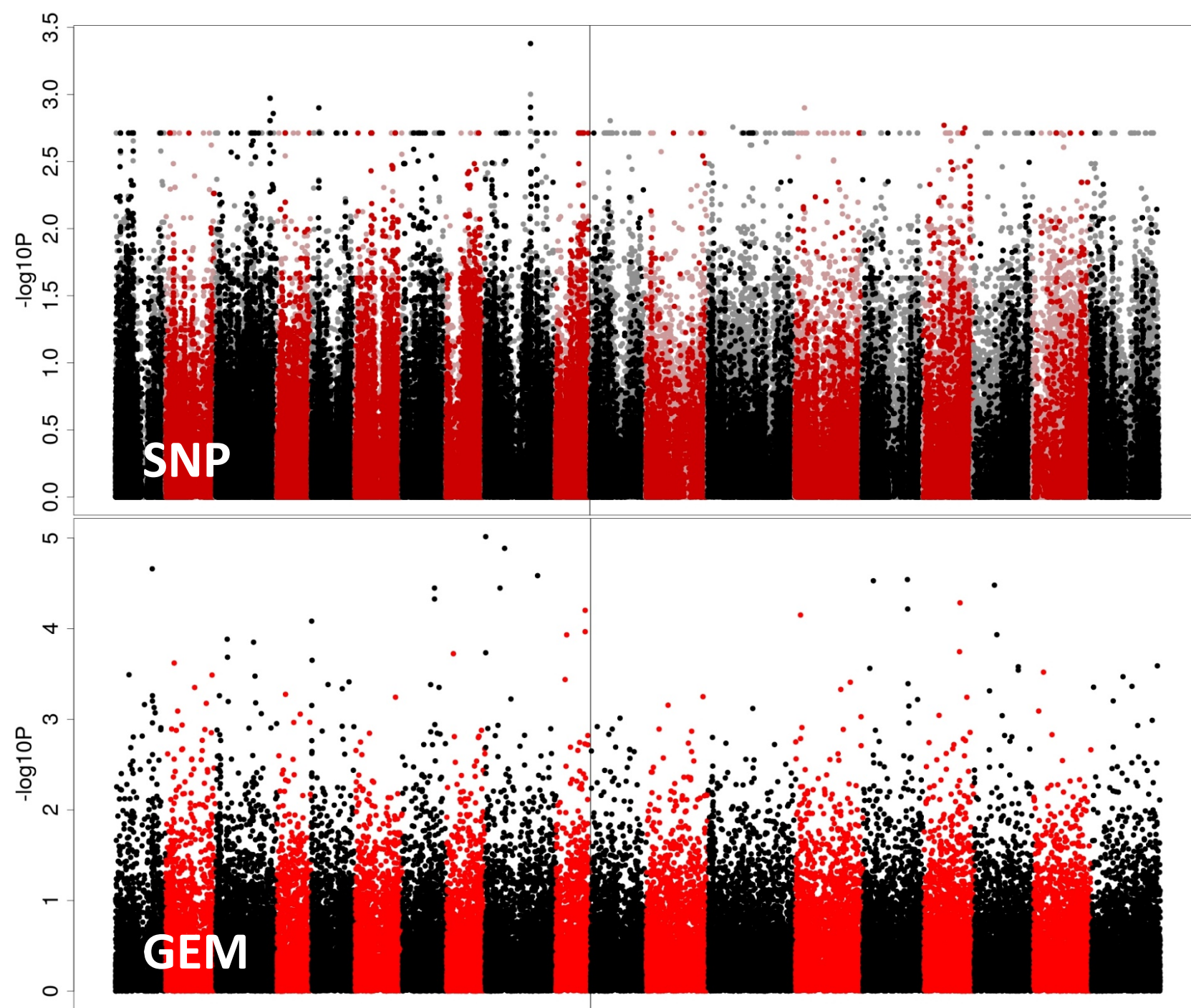
Oil Content Percent. dmb.



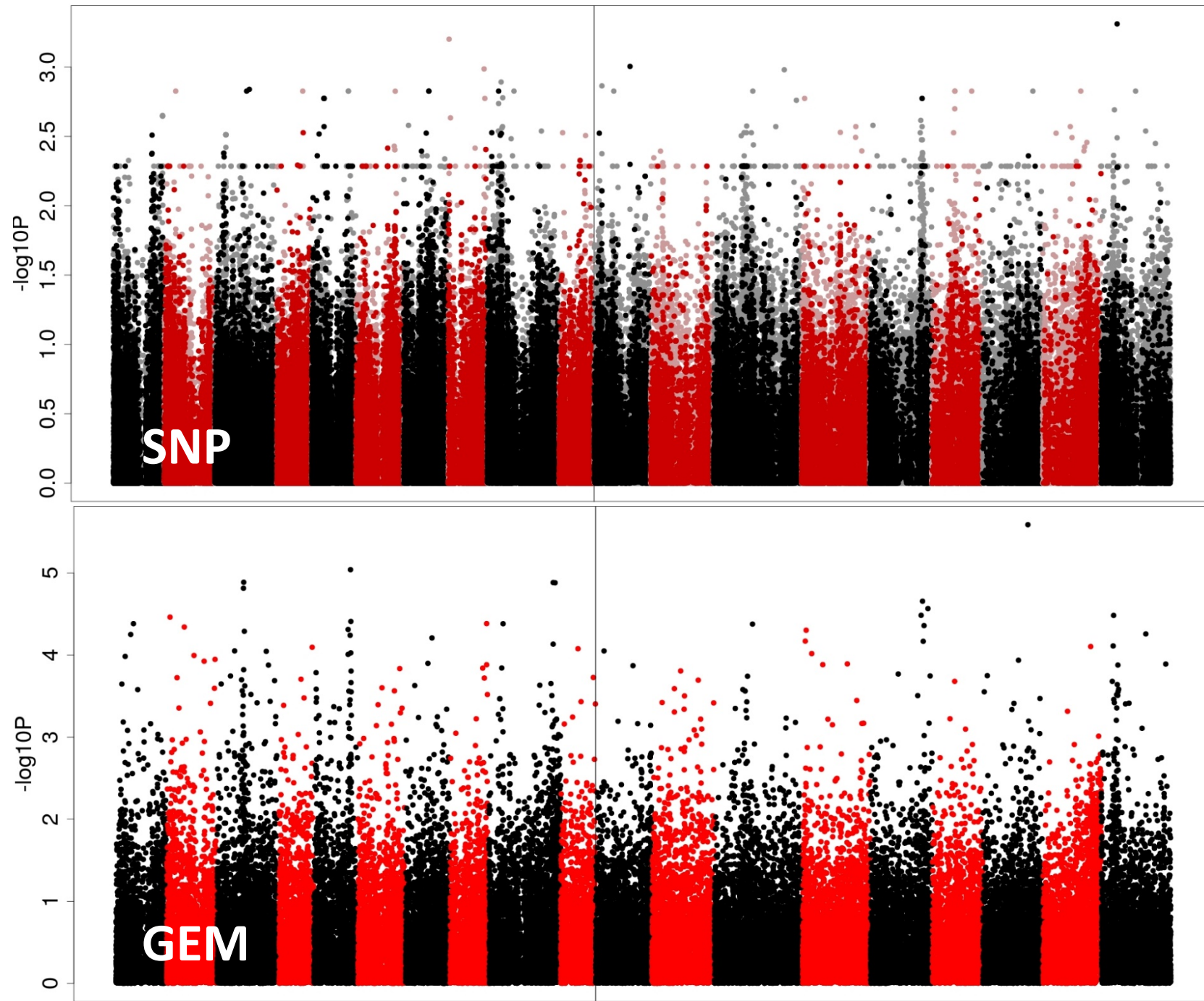
Perc..
oil..
cont..
L..vs..S.



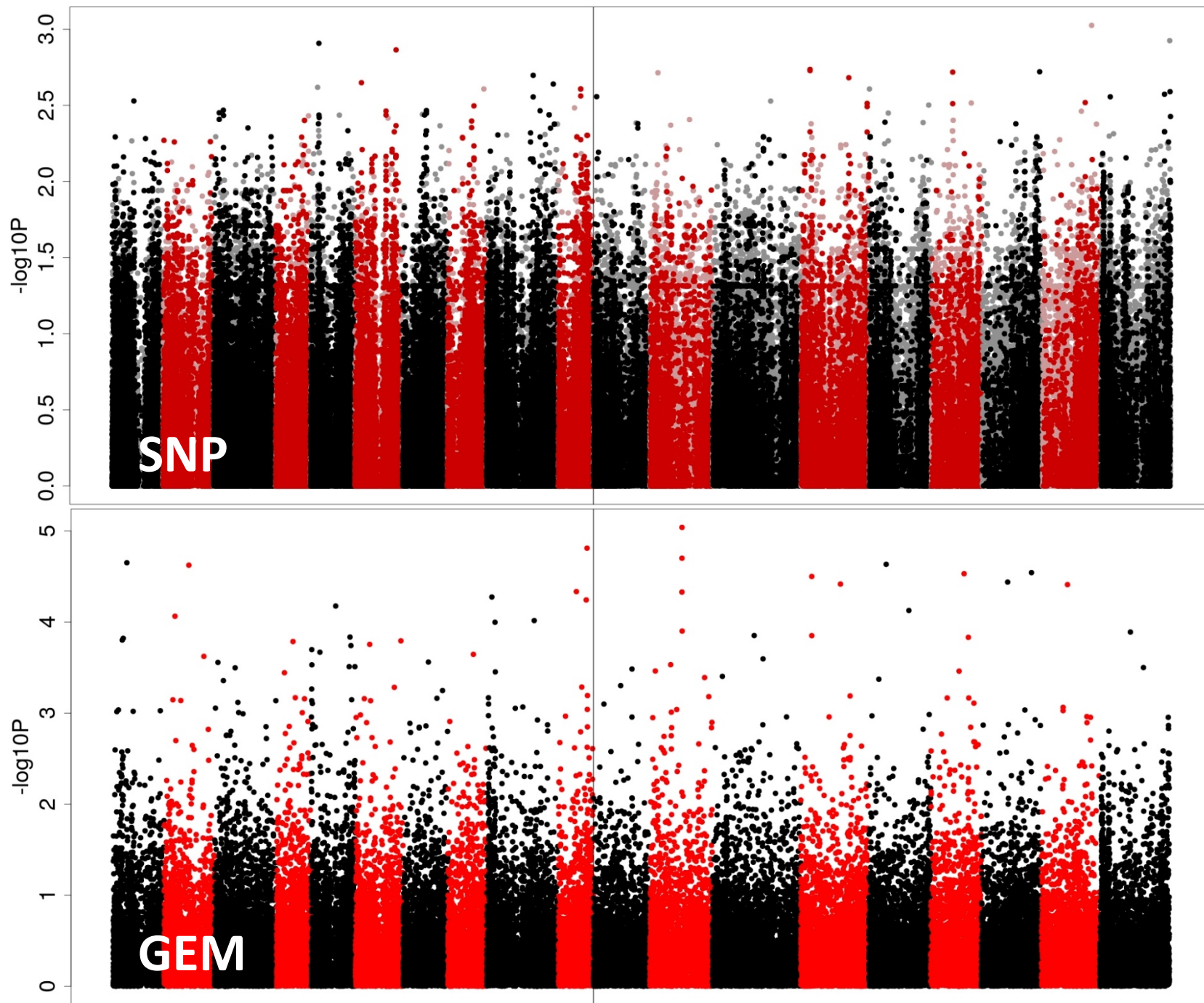
Perc.
oil.cont.
perc.dmb..
L.vs.S.



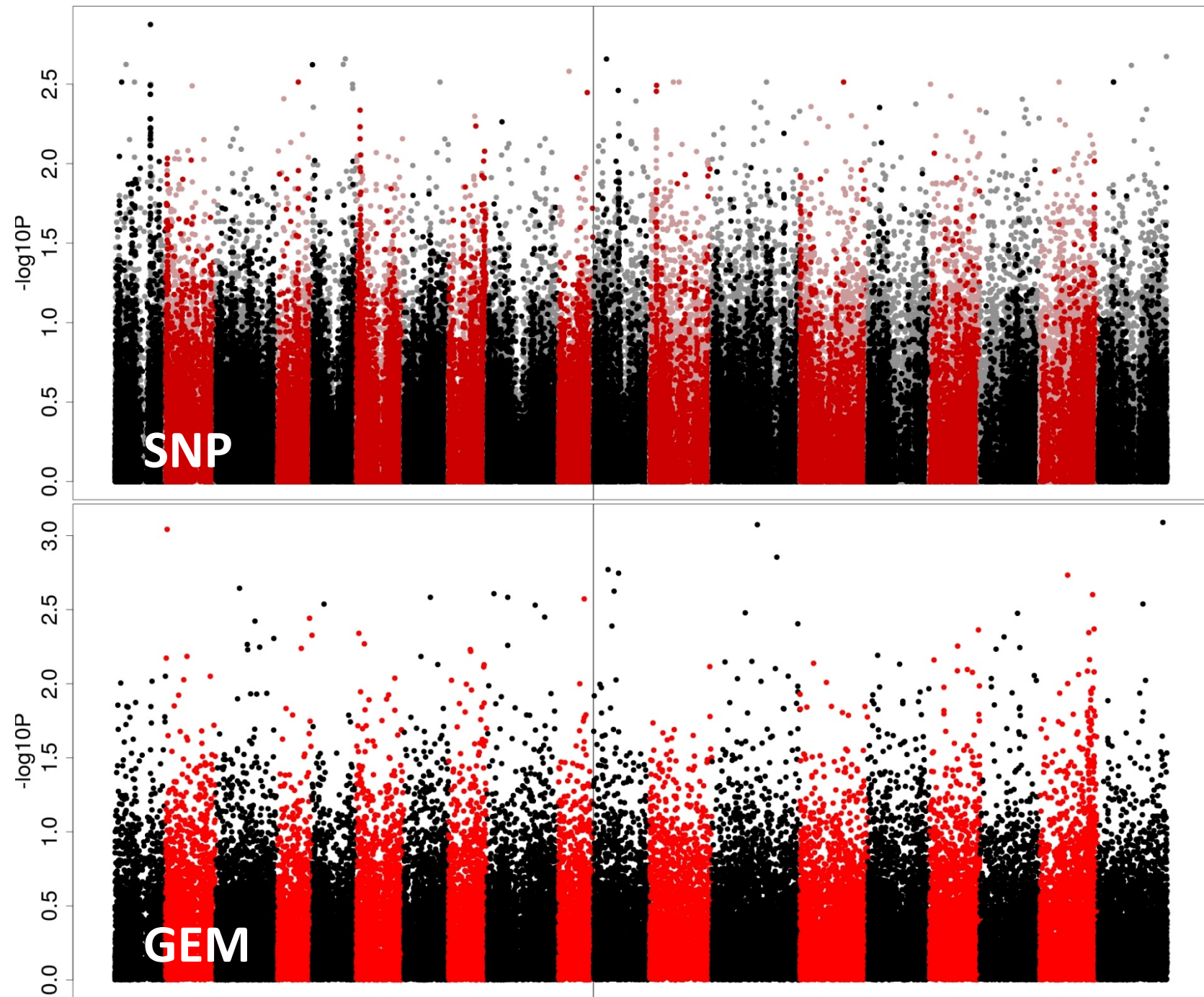
Perc
Dry..
matter..
L..vs..S.



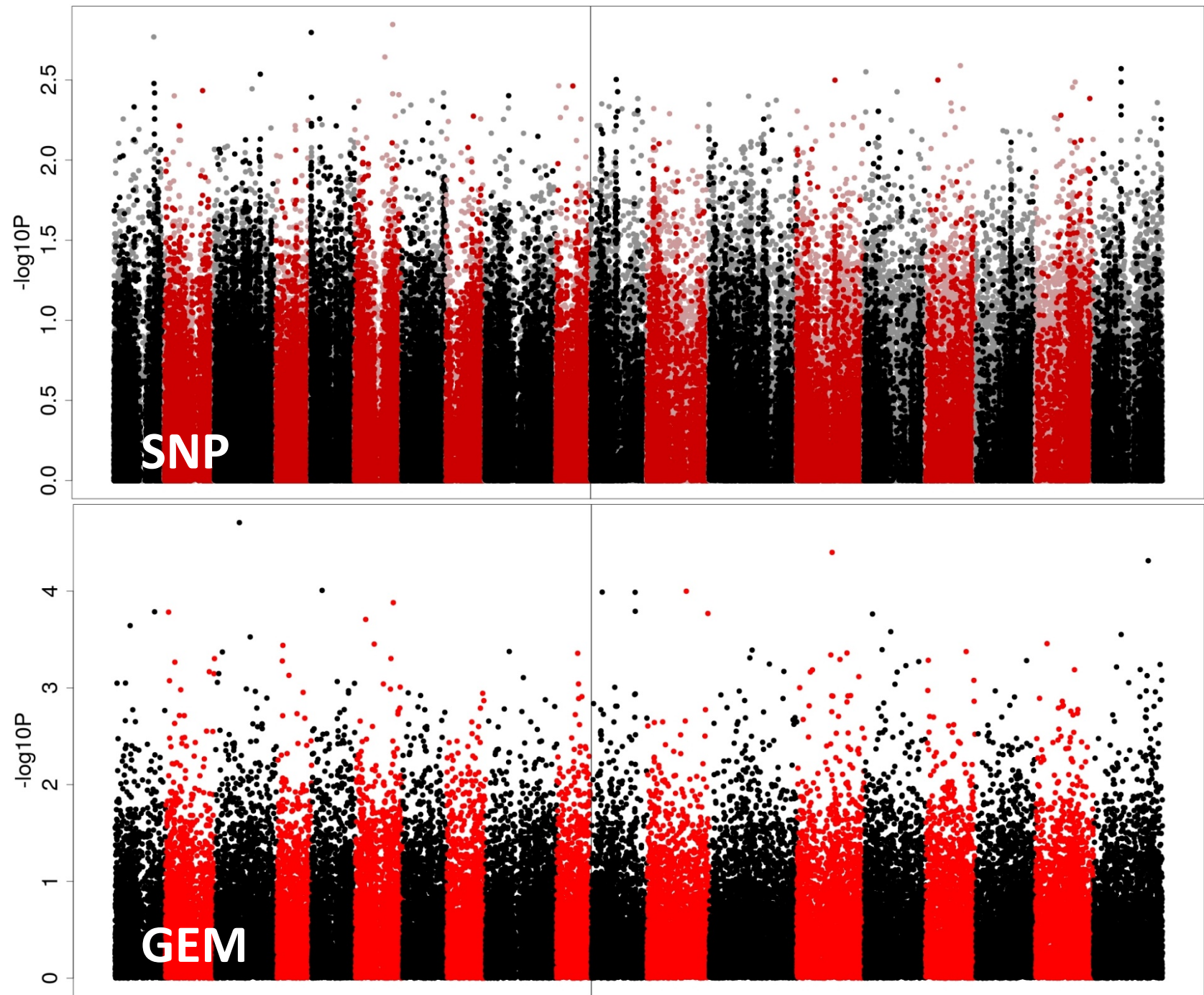
Percent..
yield..
L..Vs..S.



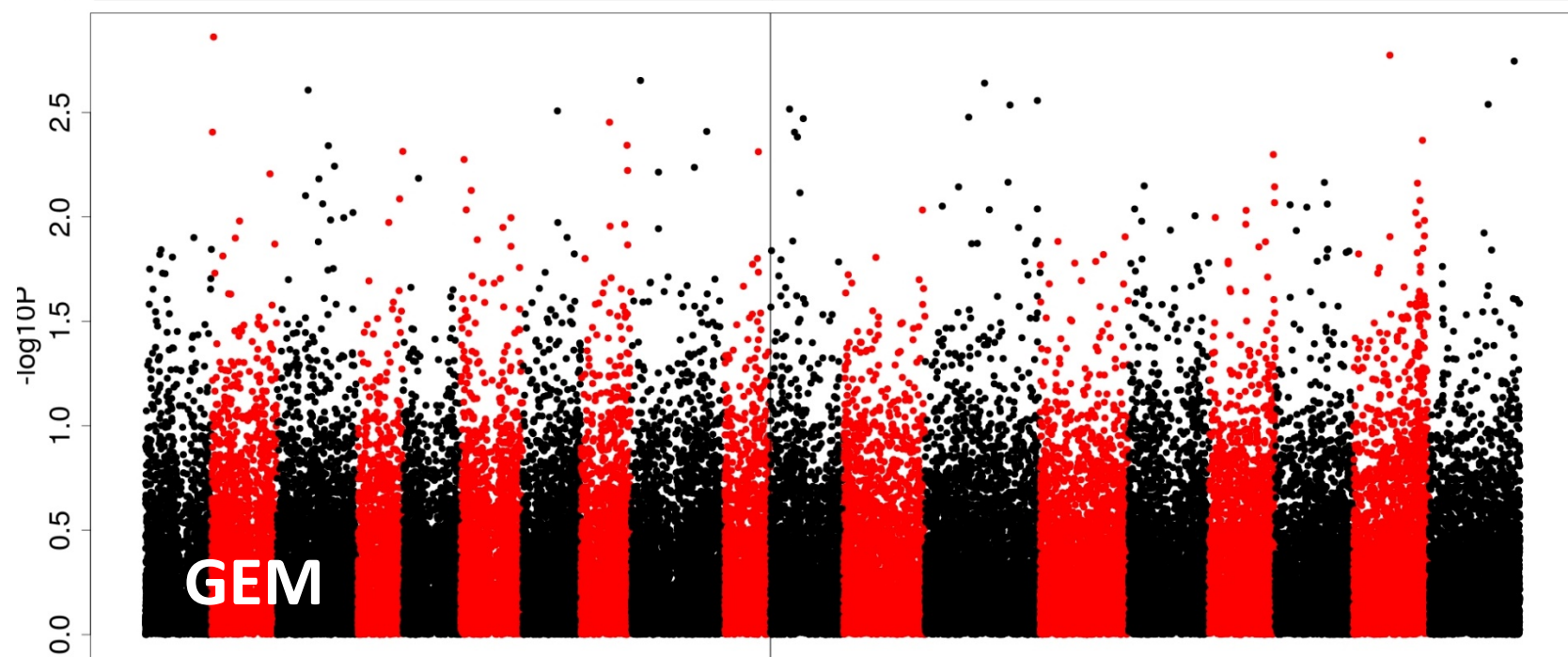
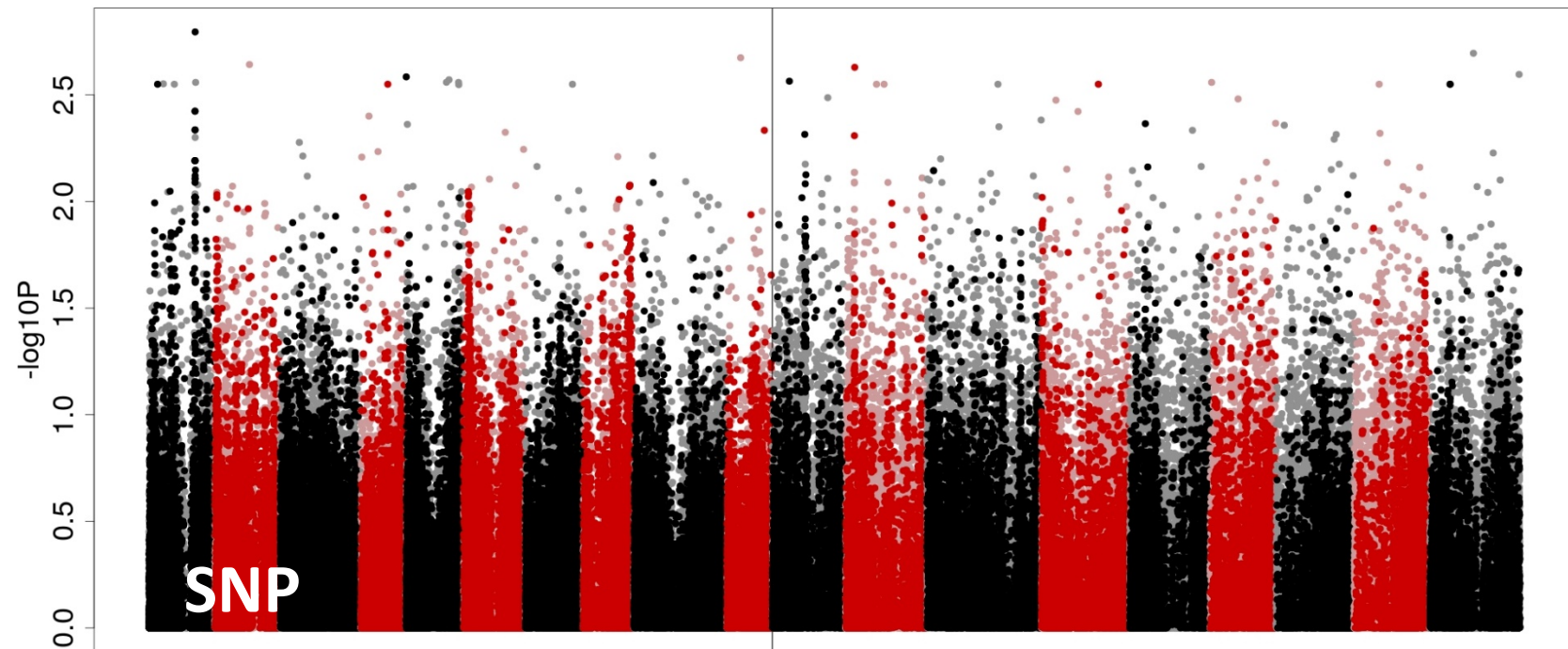
RLD..
cm.root.
per.cm3.soil.



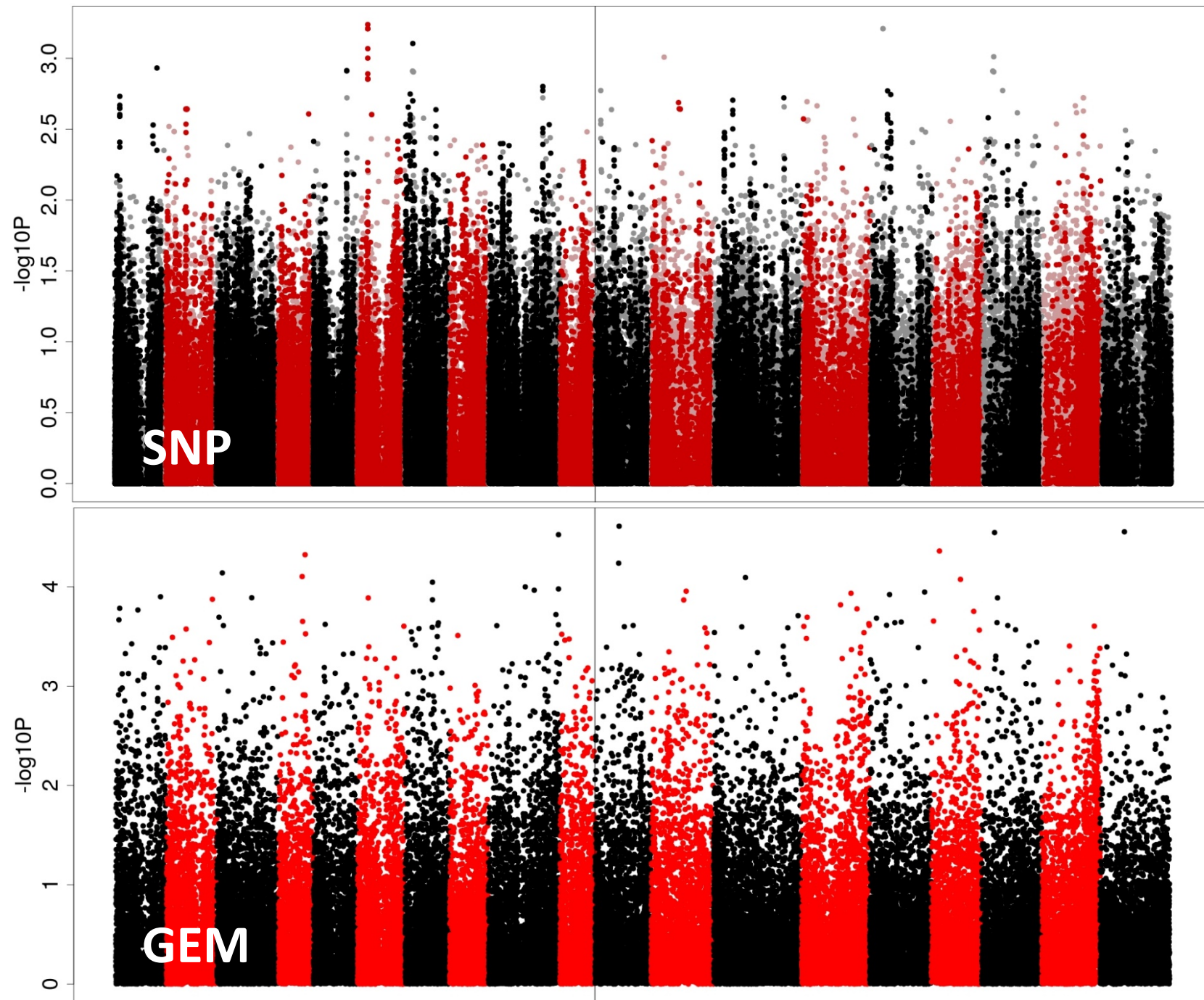
root.
diam.
mm.



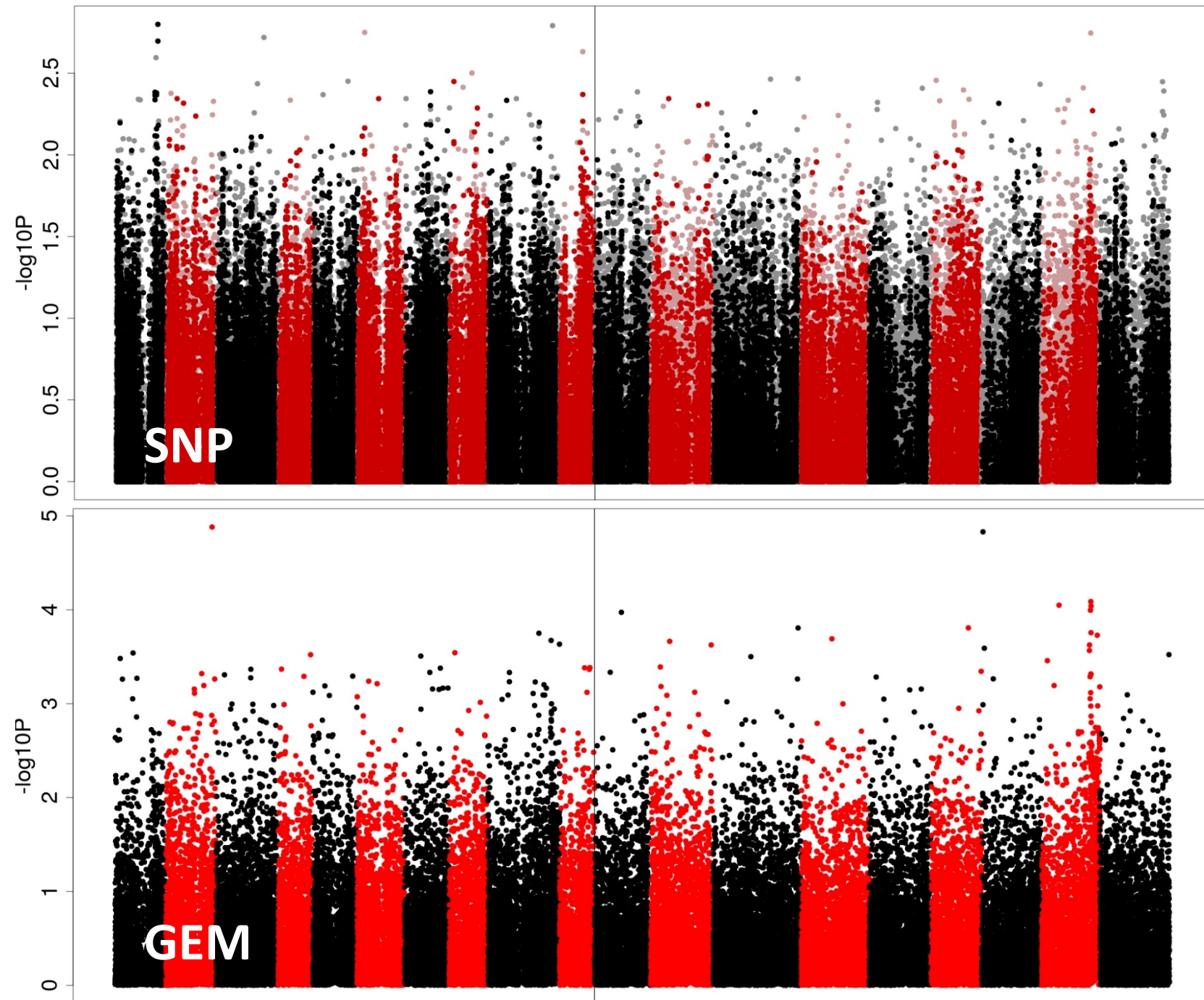
RSA.cm.



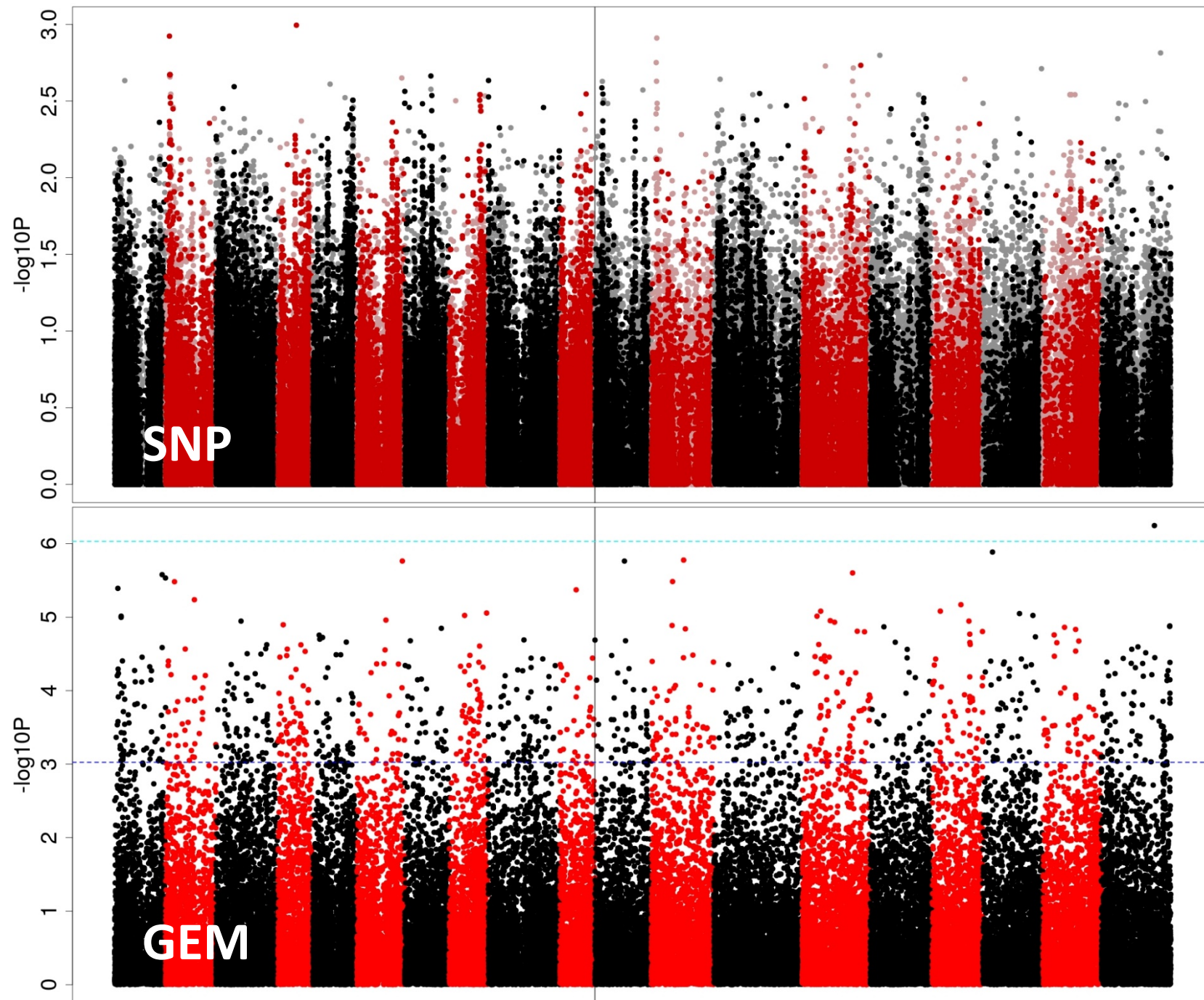
Vigour.
1to9.
1.6to1.7.



Winter.
damage.
1to9.2.



Yield.
LowN.
9.9.8mBy2m.



Yield.
stdN.
9.9.7mBy2m.

