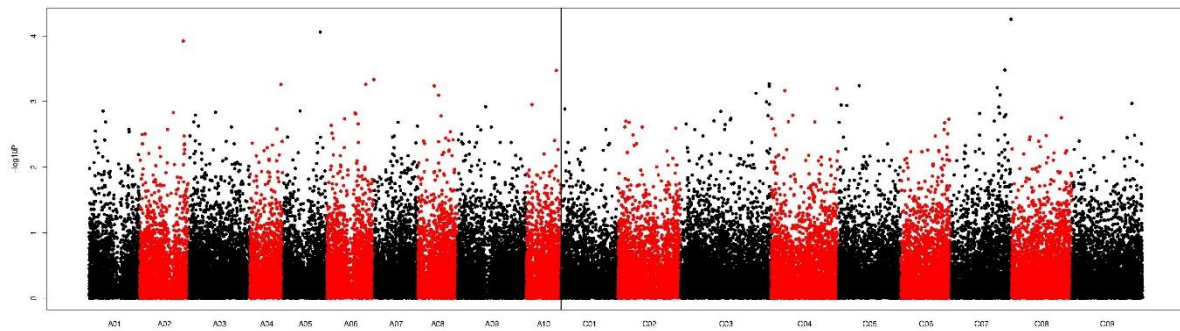
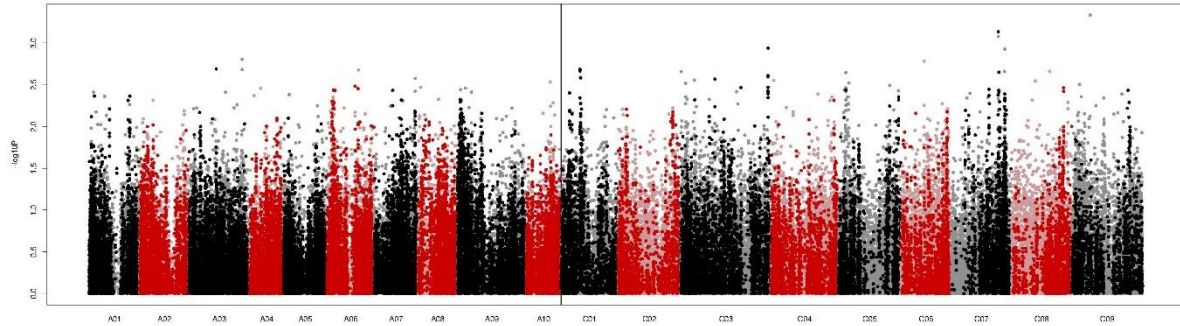


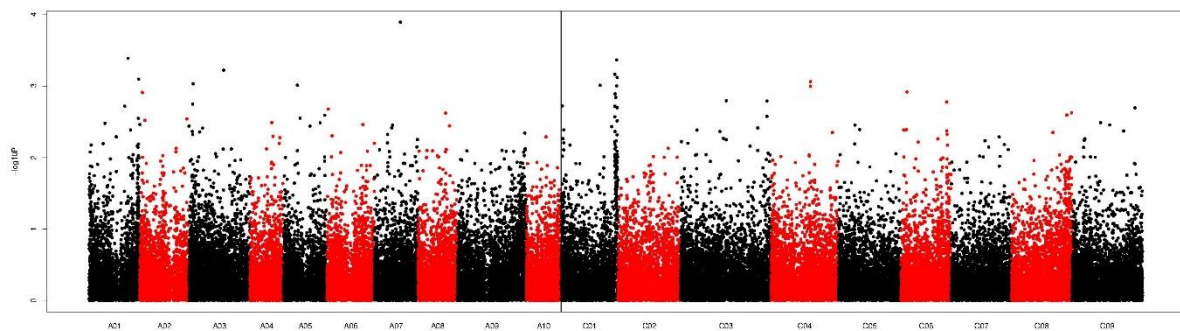
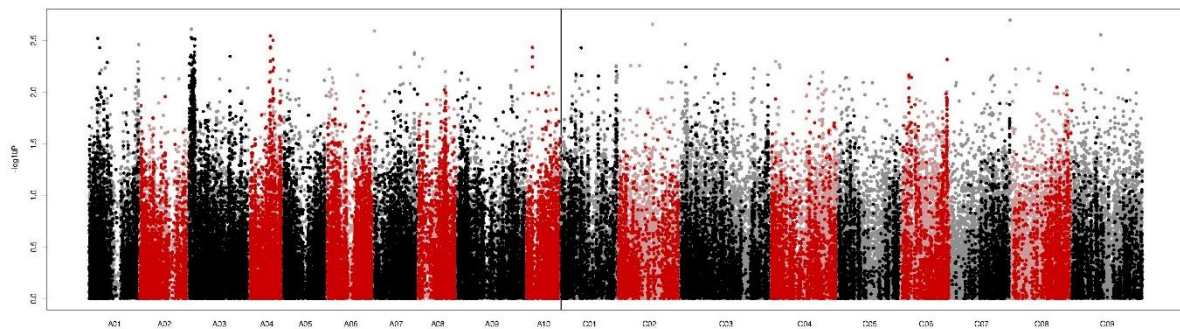
NIAB OREGIN trial data 2021/22

Submitted by: Tom Wood

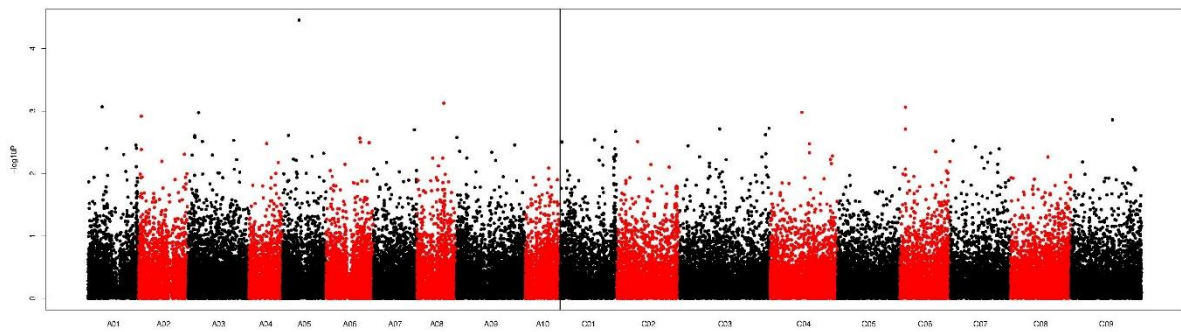
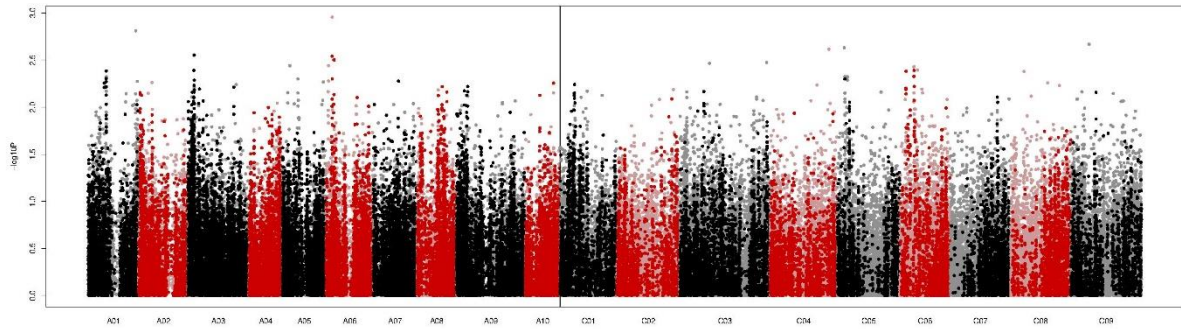
Emergence (1-9), measured 05/10/2021, growth stage: 1.1-1.3



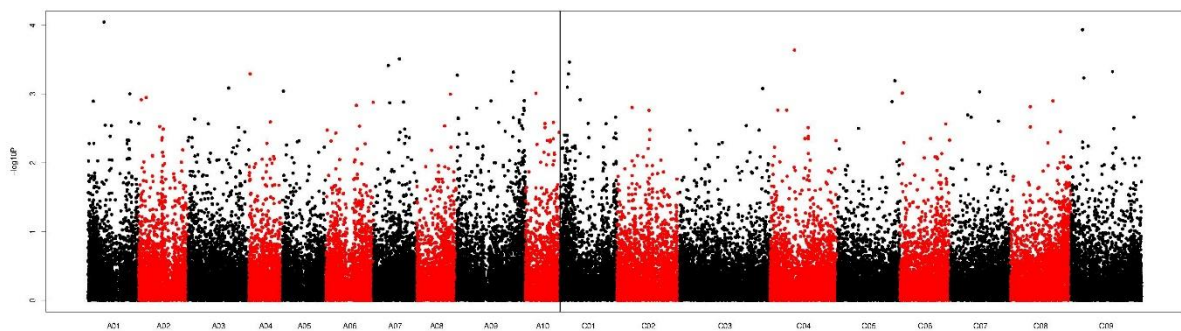
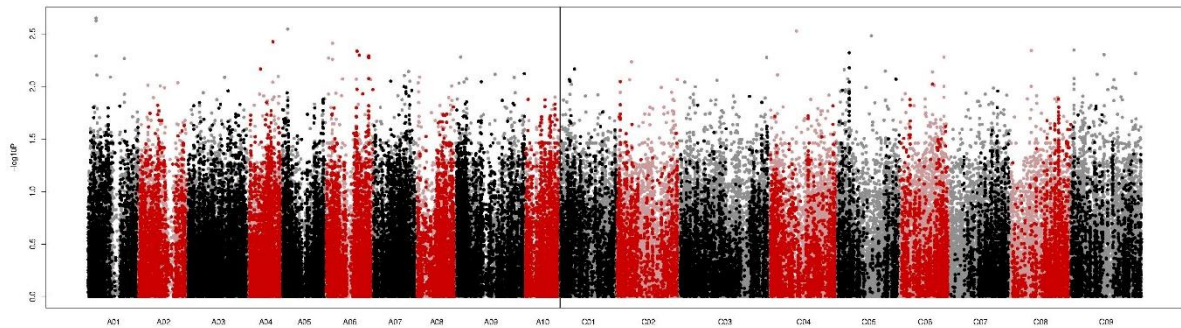
Establishment (1-9) measured 20/10/2021, growth stage: 1.2-1.4



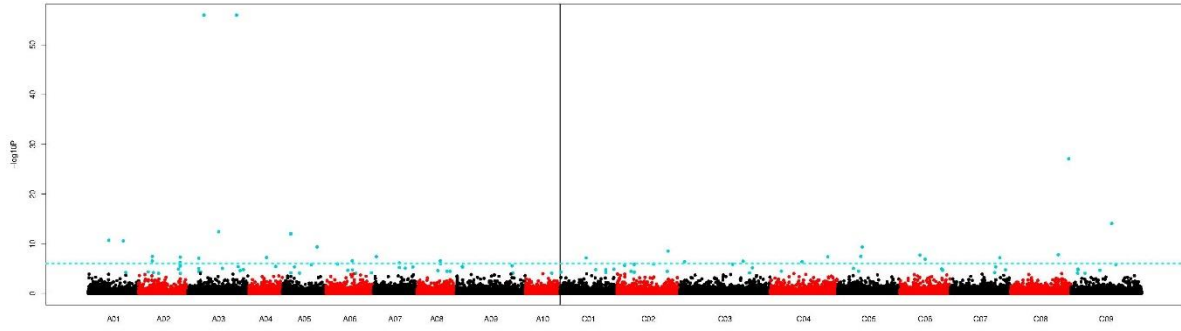
Early vigour (1-9) measured 20/10/2021, growth stage: 1.2-1.4



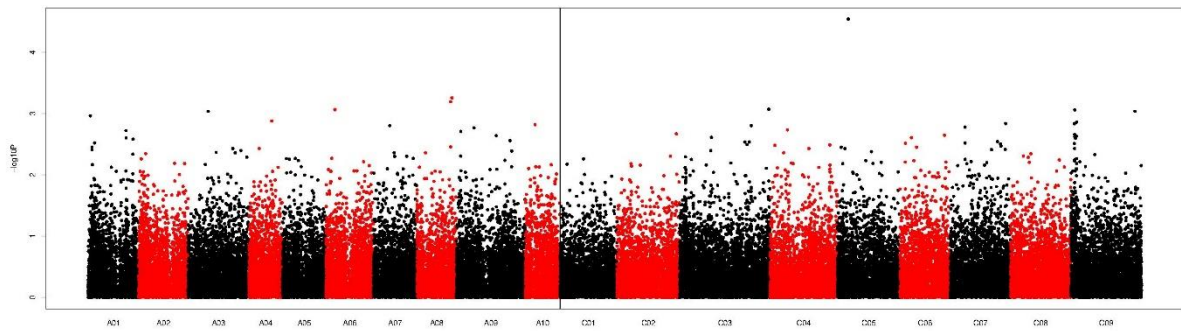
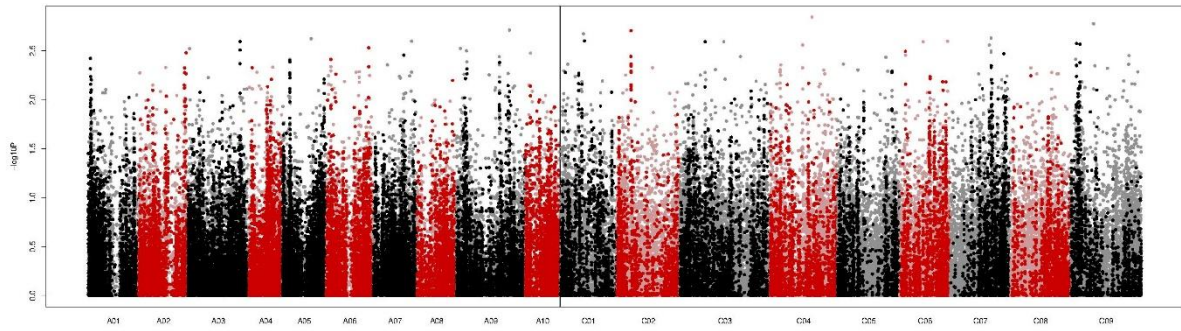
Late vigour (1-9) measured 12/11/2021, growth stage: 1.3-1.5



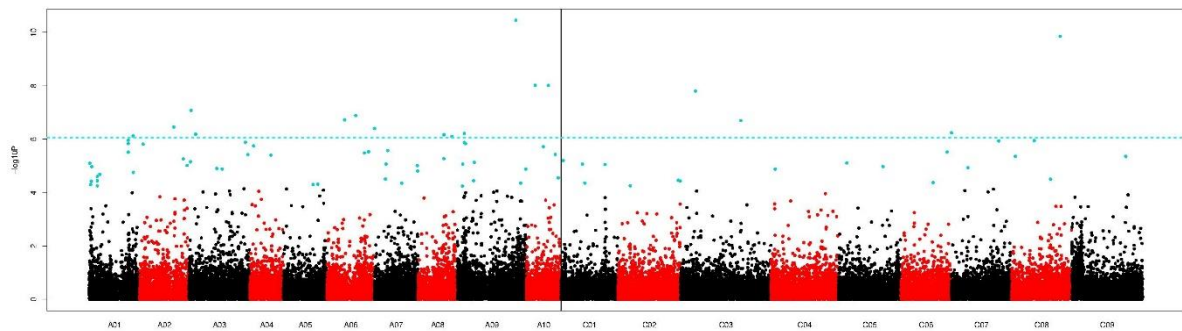
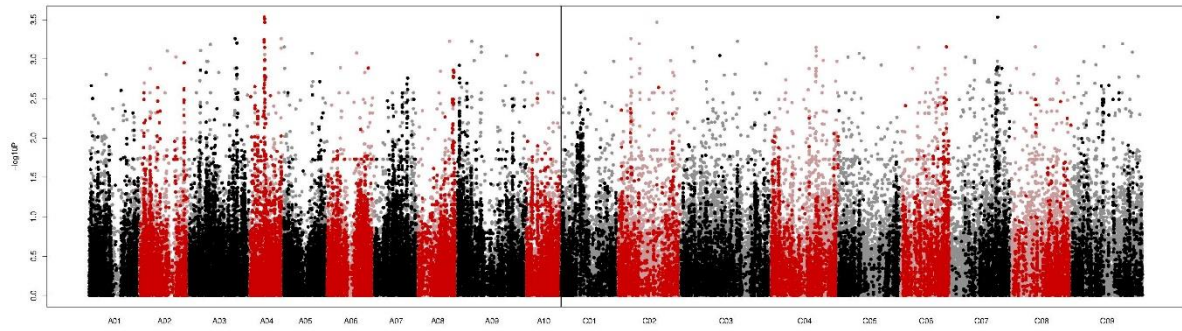
Bird Damage (1-9) measured 02/02/2022, growth stage: 1.5-1.8



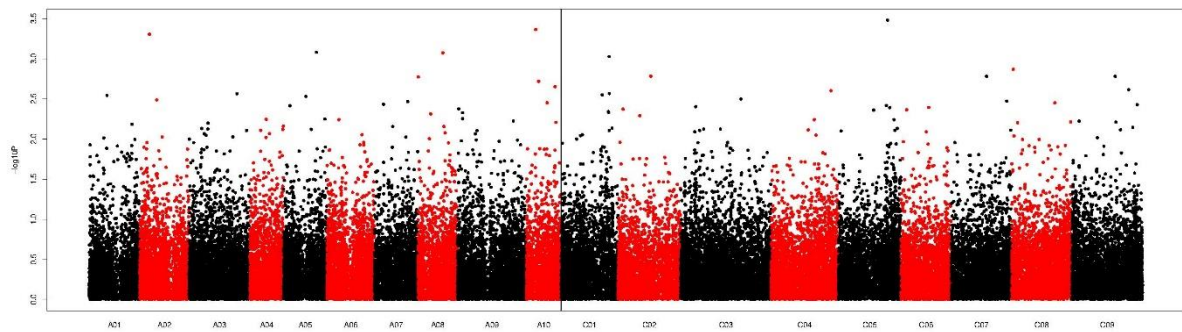
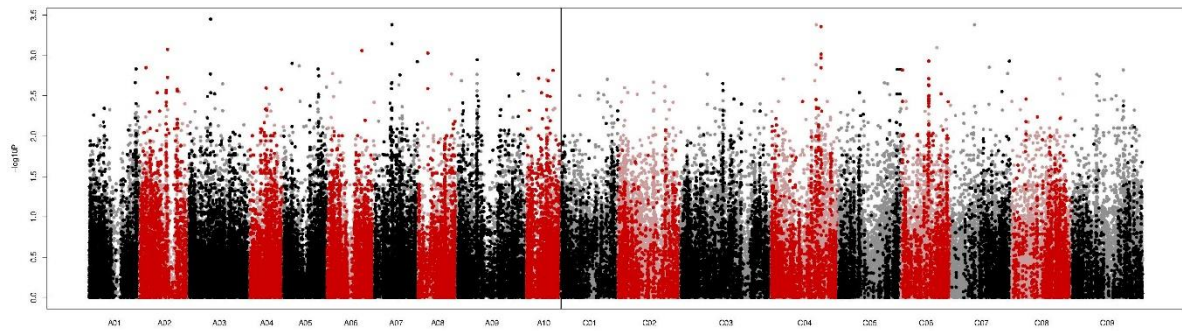
Winter Damage (1-9) measured 02/02/2022, growth stage: 1.5-1.8



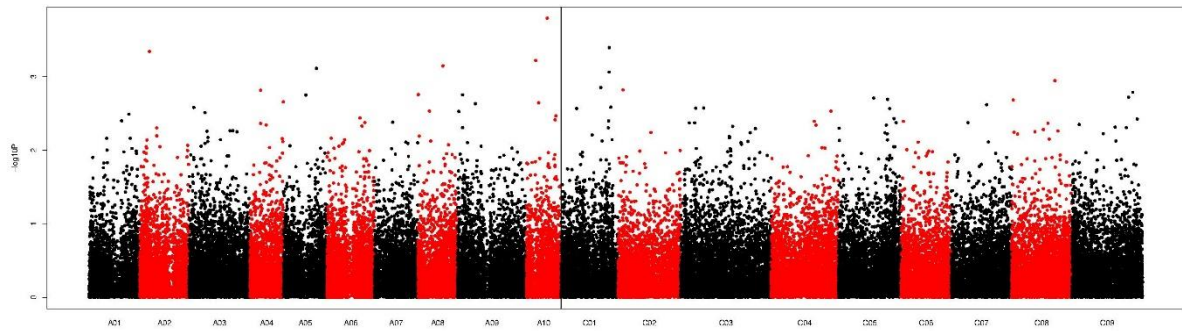
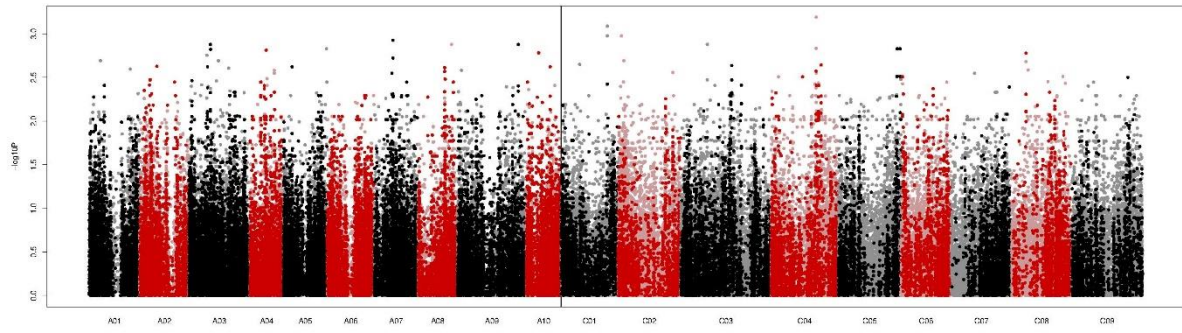
Early Flowering (1-9) measured 24/03/2022, growth stage: 4.0-4.5



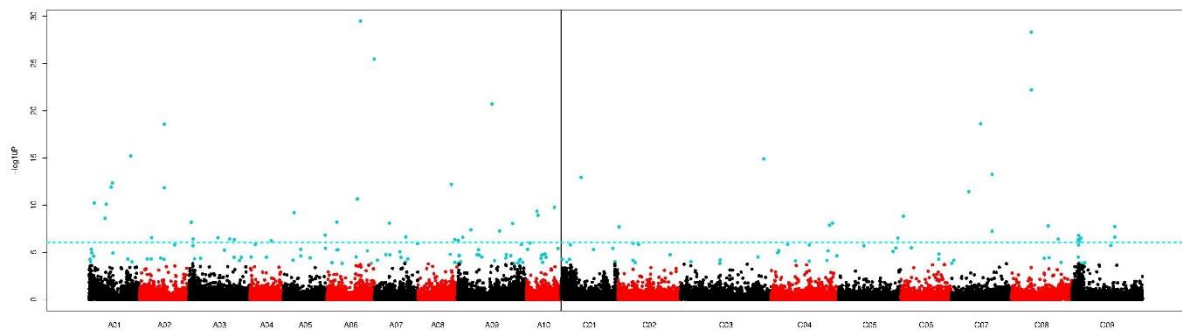
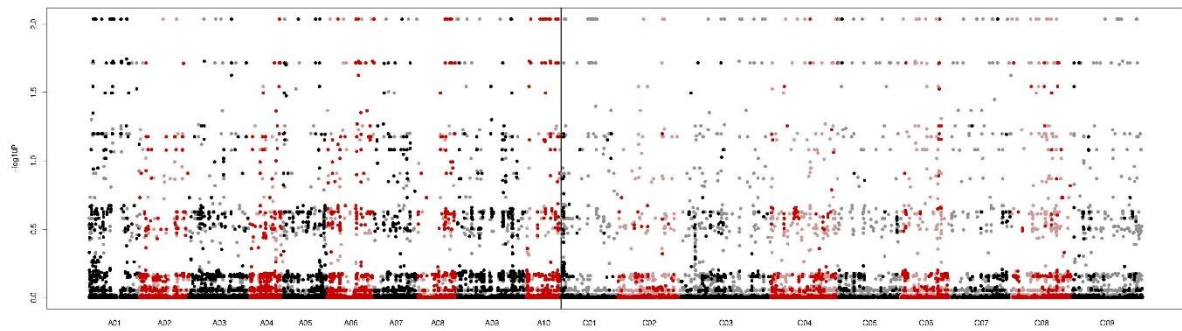
Mid Flowering (1-9) at low N, measured 13/04/2022, growth stage: 4.5-4.9



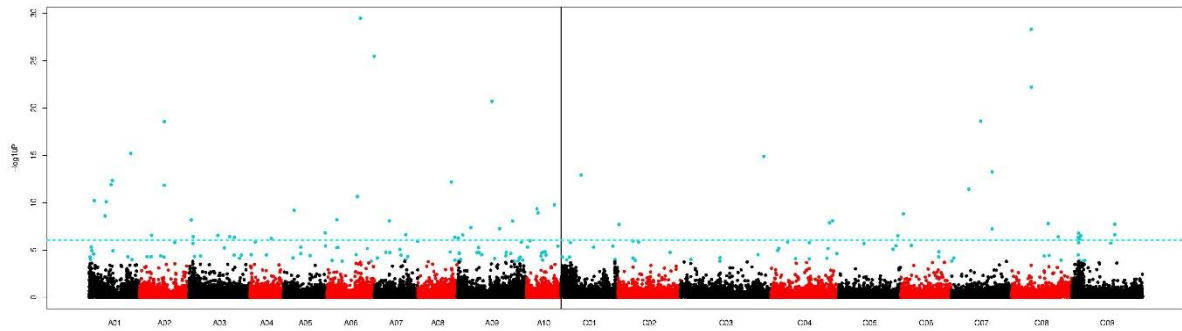
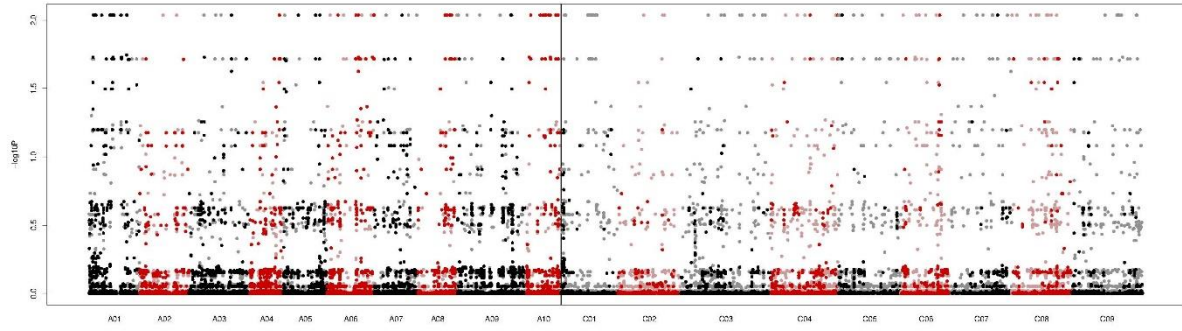
Mid Flowering (1-9) at standard N, measured 13/04/2022, growth stage: 4.5-4.9



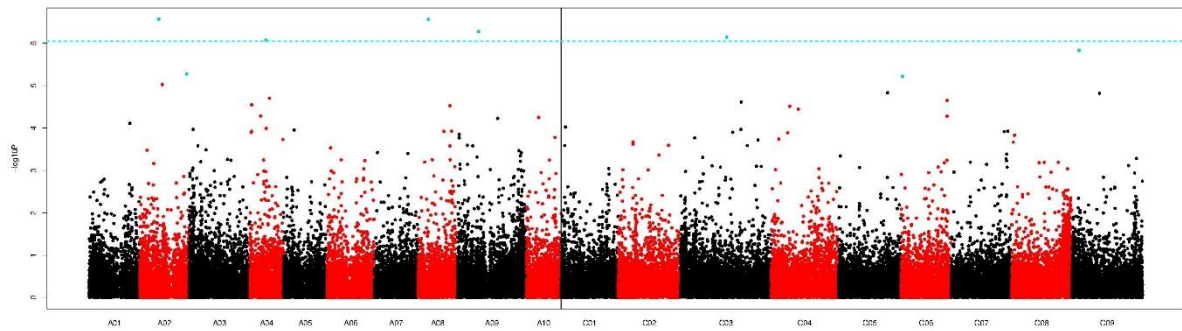
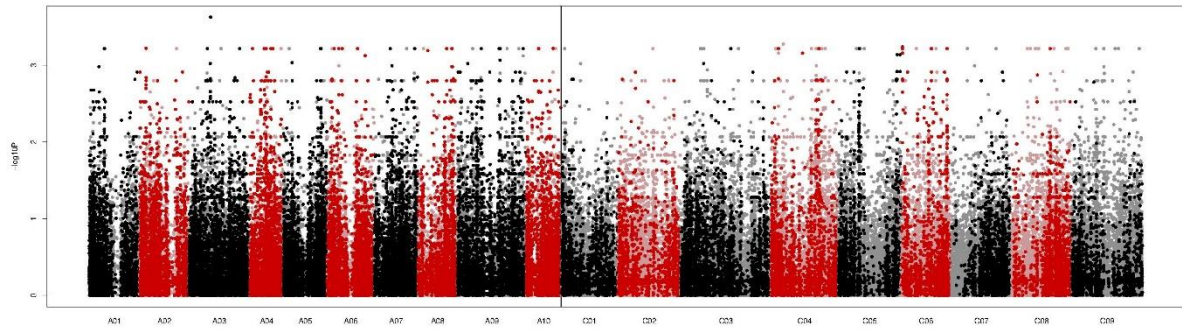
CSFB score (1-9) at low N, measured 13/04/2022, growth stage: 4.5-4.9



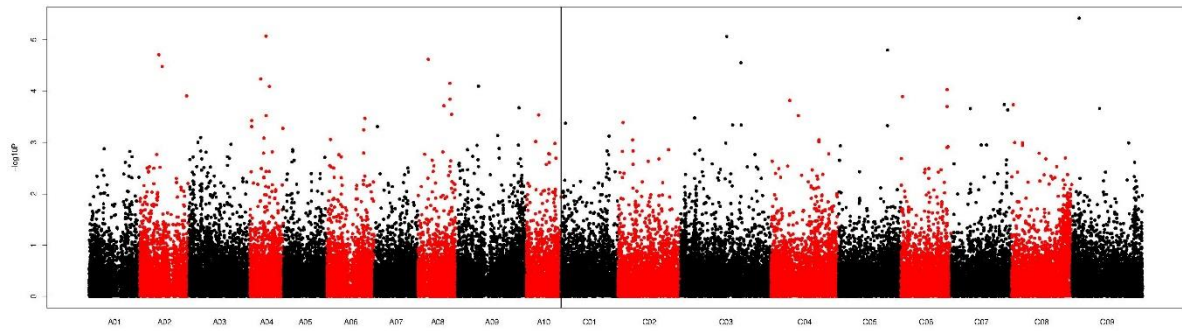
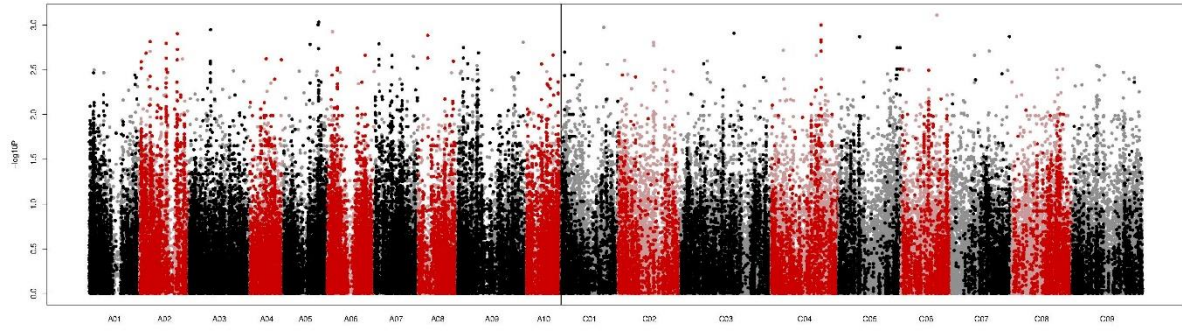
CSFB score (1-9) at standard N, measured 13/04/2022, growth stage: 4.5-4.9



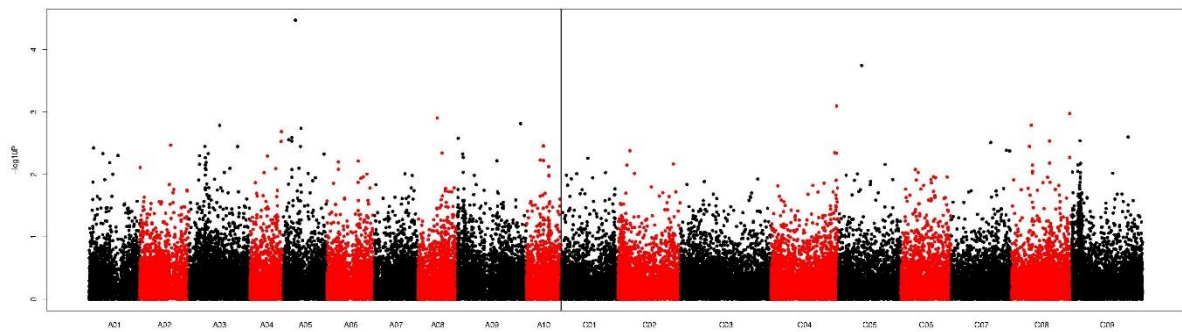
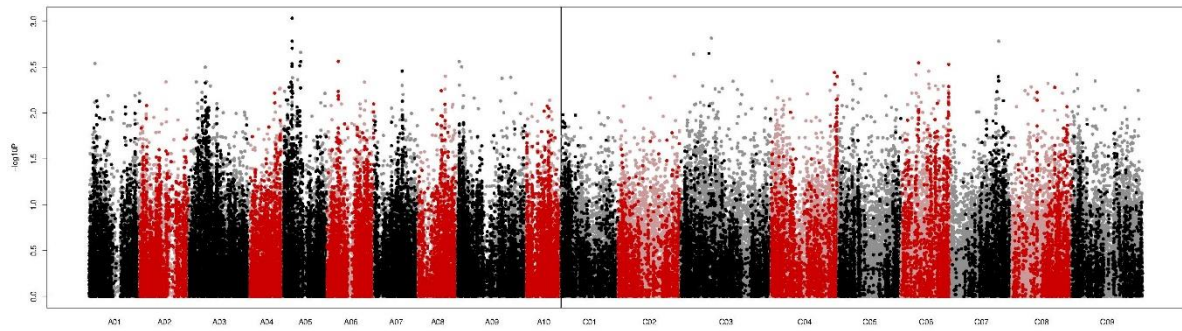
Late Flowering (1-9) at low N, measured 20/04/2022, growth stage: 4.9-5.3



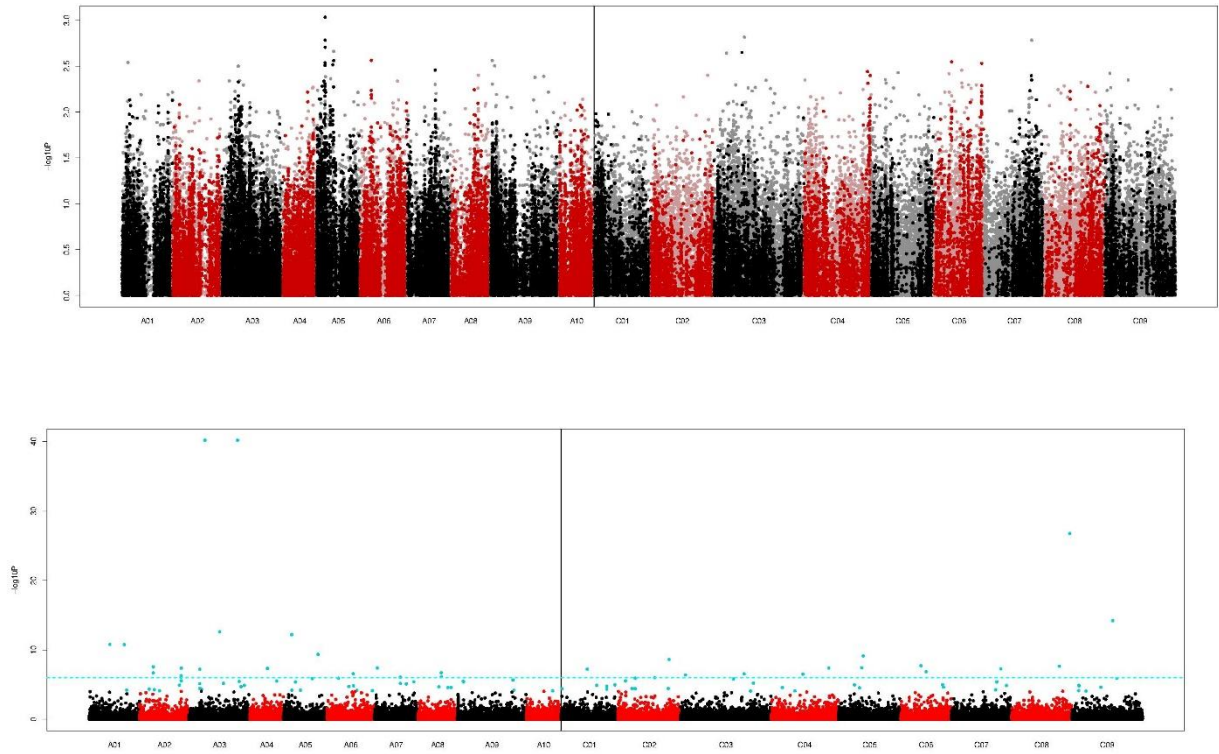
Late Flowering (1-9) at standard N, measured 20/04/2022, growth stage: 4.9-5.3



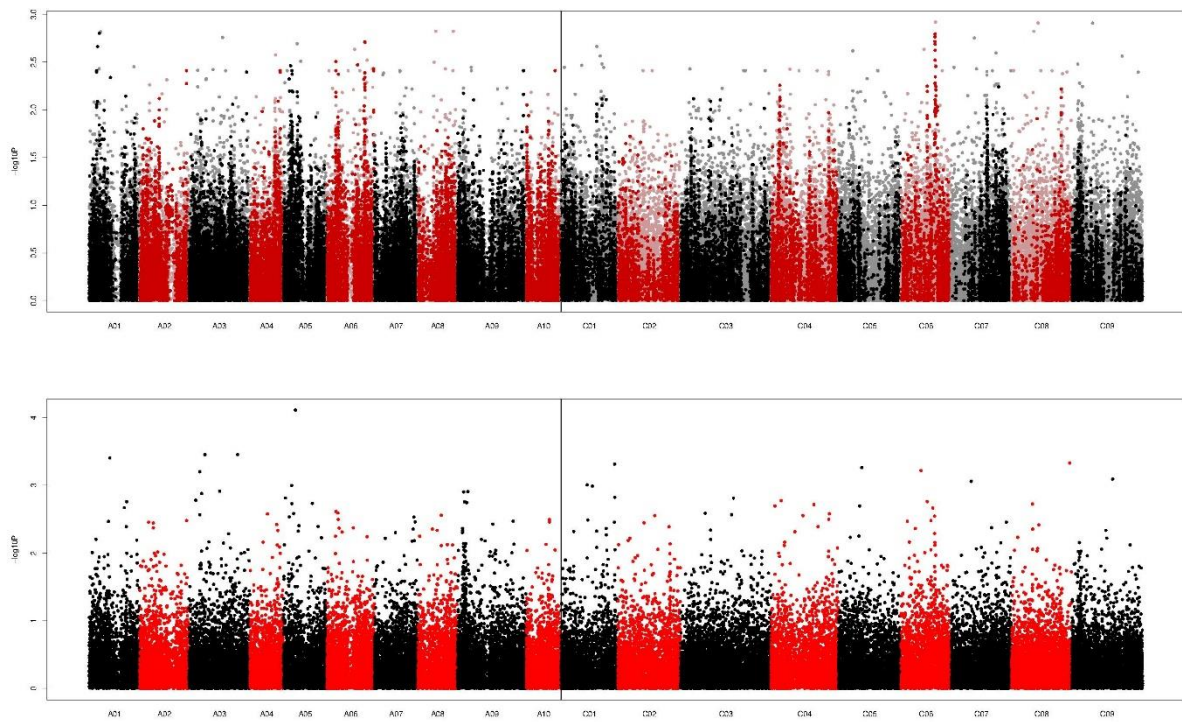
Plot length (m) at low N, measured 20/04/2022, growth stage: 4.9-5.3



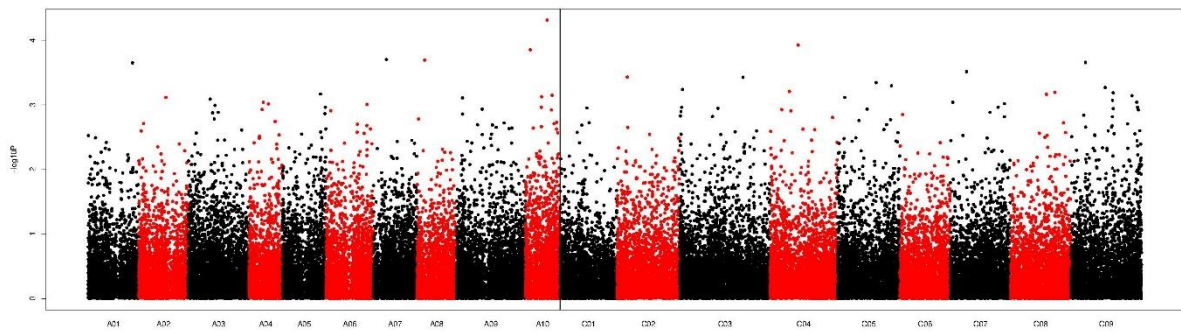
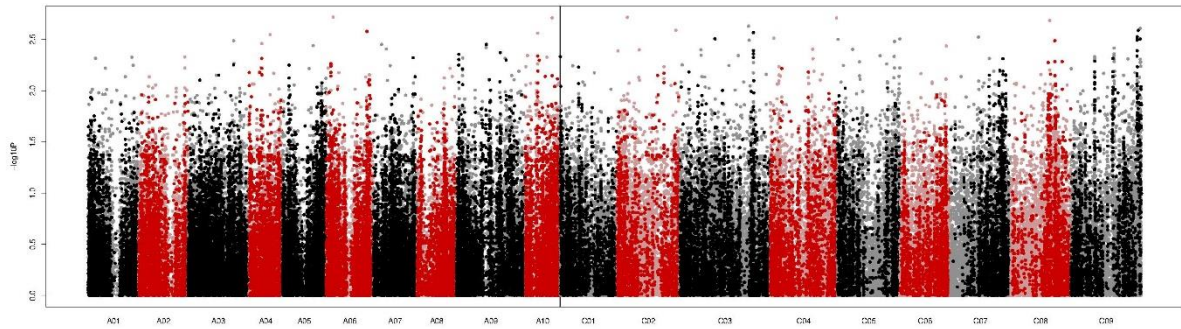
Plot width (m) at low N, measured 20/04/2022, growth stage: 4.9-5.3



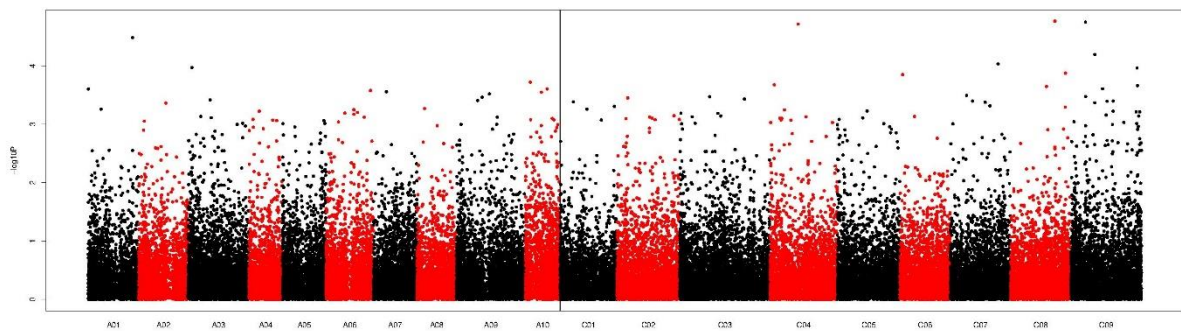
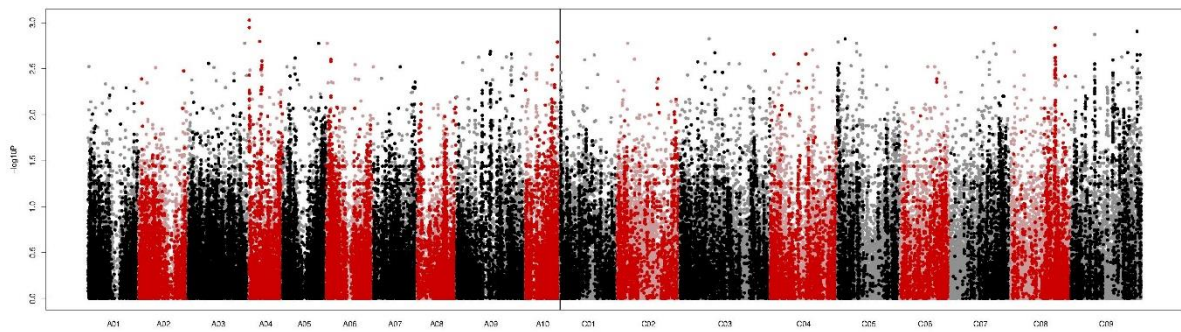
Plot length (m) at standard N, measured 20/04/2022, growth stage: 4.9-5.3



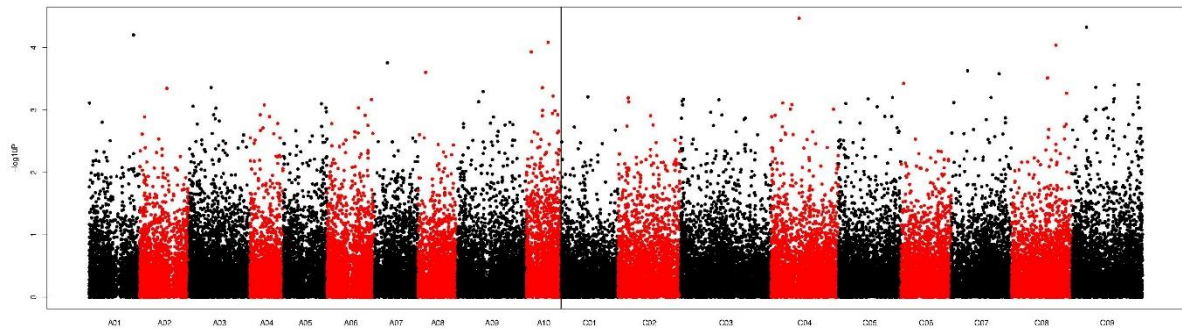
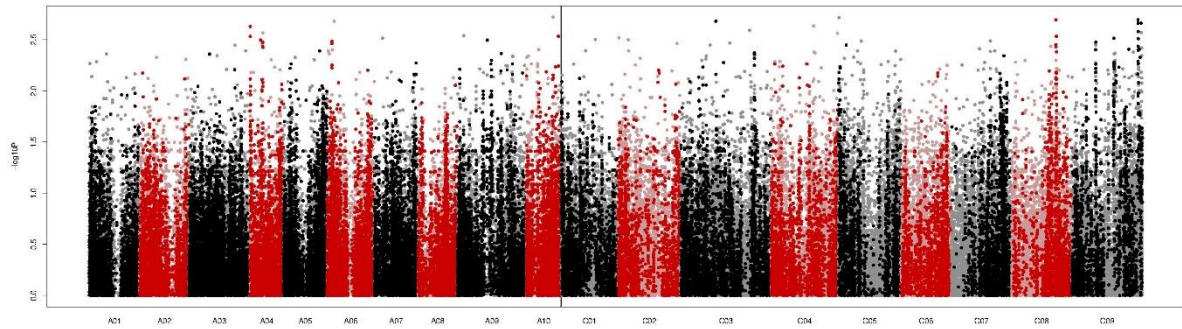
Plant Height1 (cms) at low N, measured 12/05/2022, growth stage: 4.7-5.7



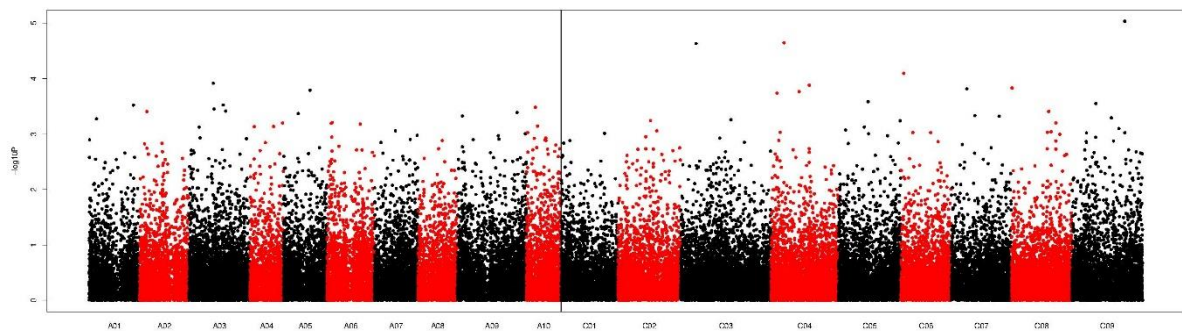
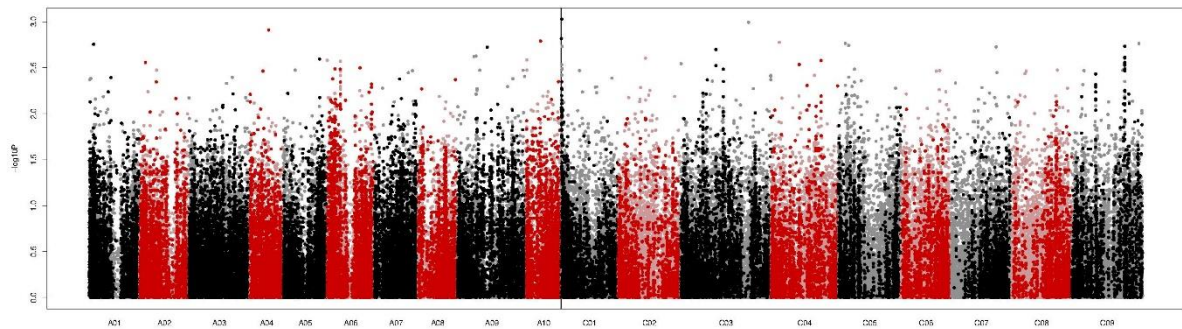
Plant Height2 (cms) at low N, measured 12/05/2022, growth stage: 4.7-5.7



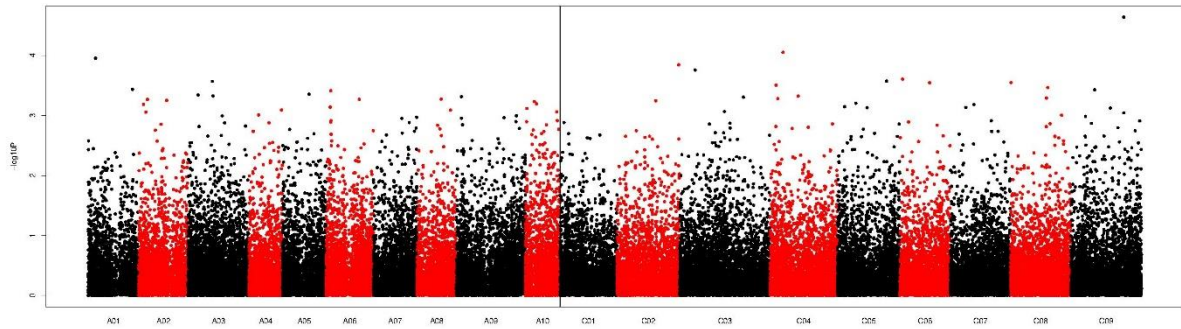
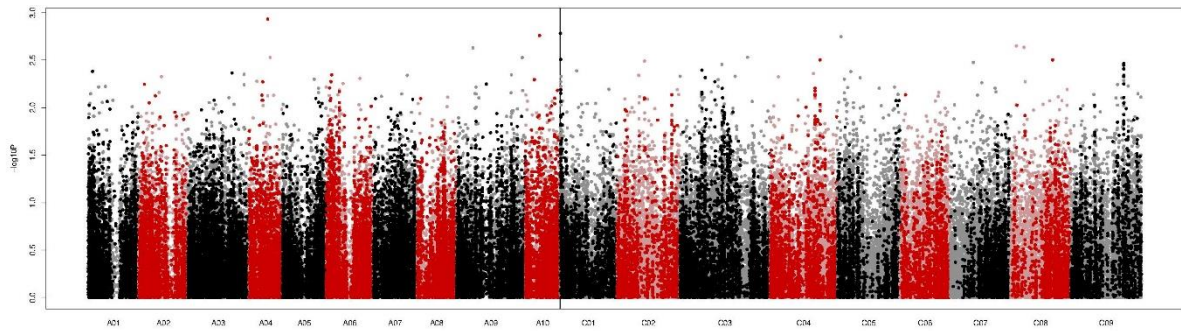
Plant Height average (cms) at low N, measured 12/05/2022, growth stage: 4.7-5.7



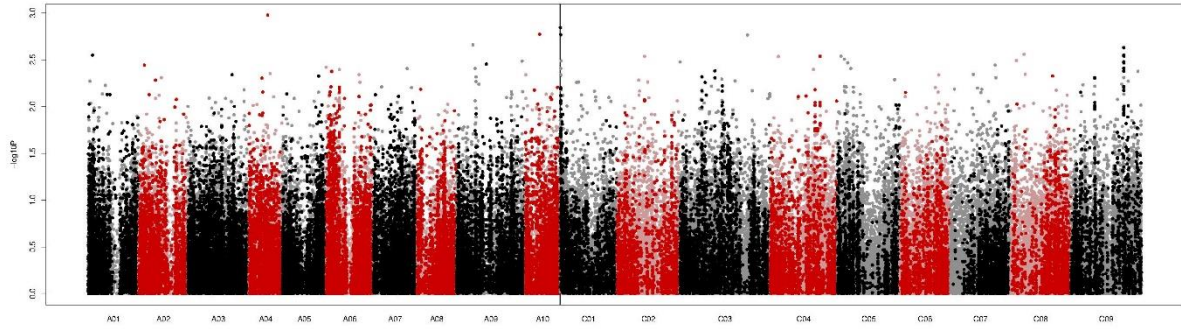
Plant Height1 (cms) at standard N, measured 12/05/2022, growth stage: 4.7-5.7



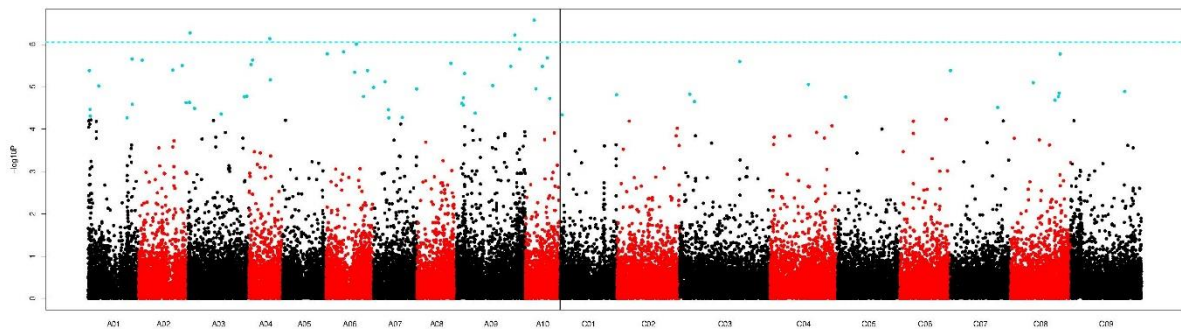
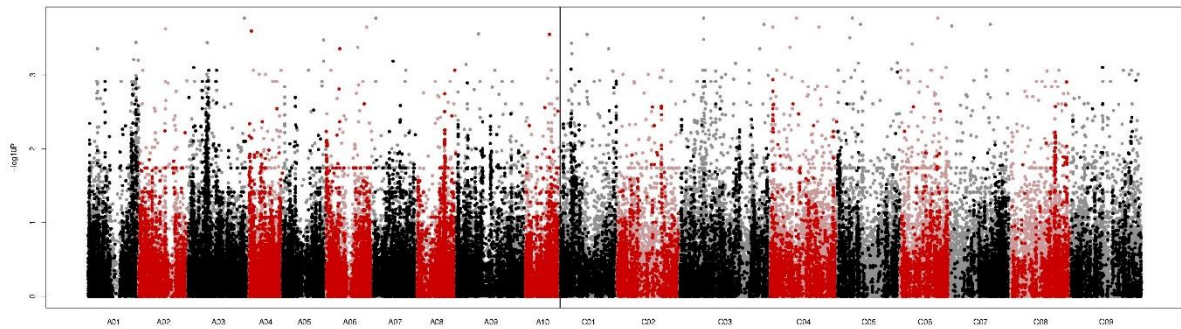
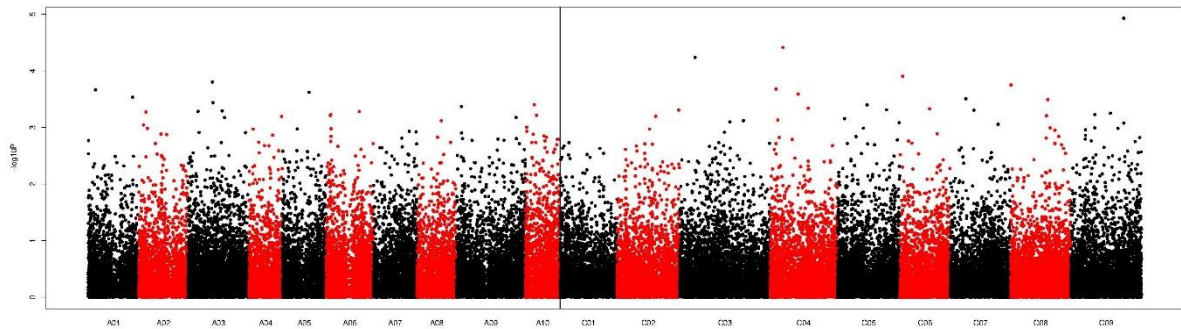
Plant Height2 (cms) at standard N, measured 12/05/2022, growth stage: 4.7-5.7



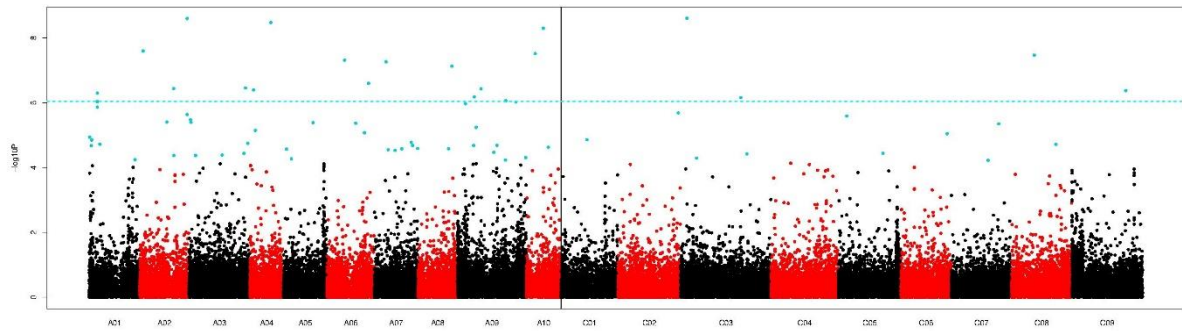
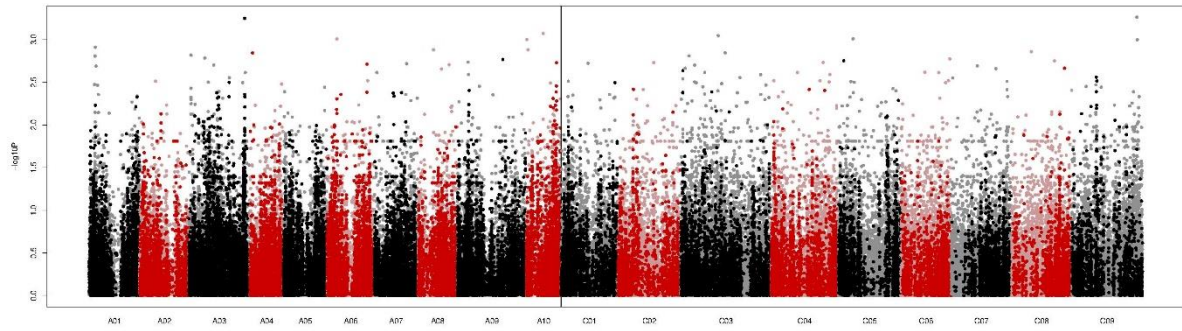
Plant Height average (cms) at standard N, measured 12/05/2022, growth stage: 4.7-5.7



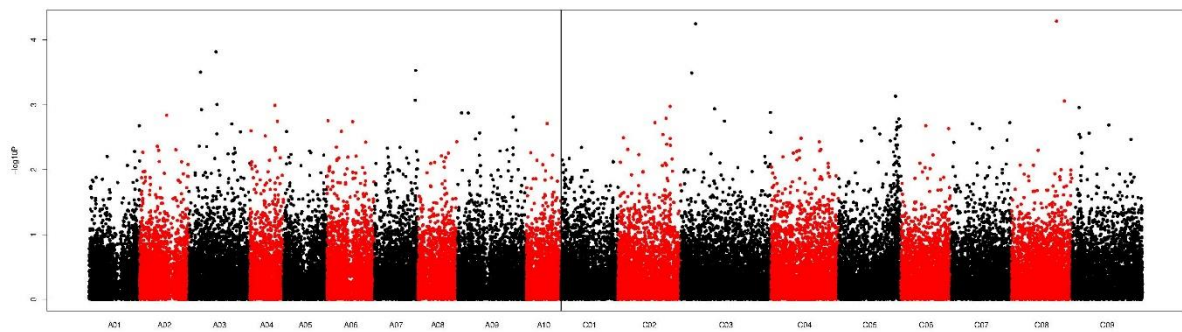
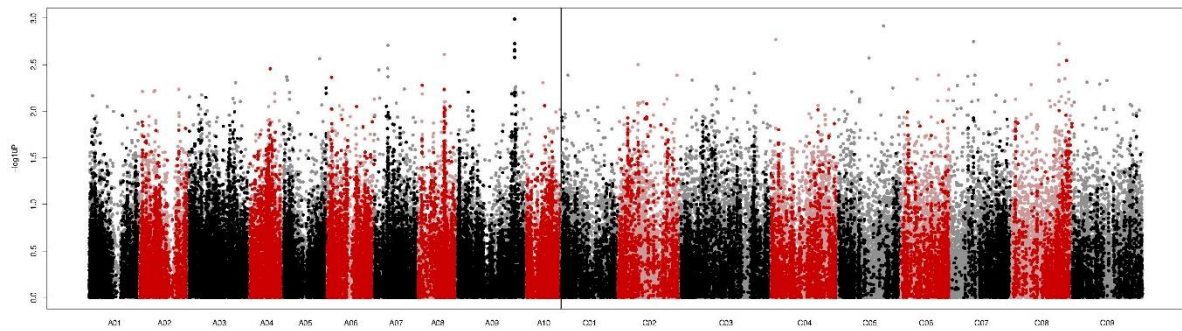
Stem Stiffness (1-9) at low N, measured 30/05/2022, growth stage: 5.7-6.2



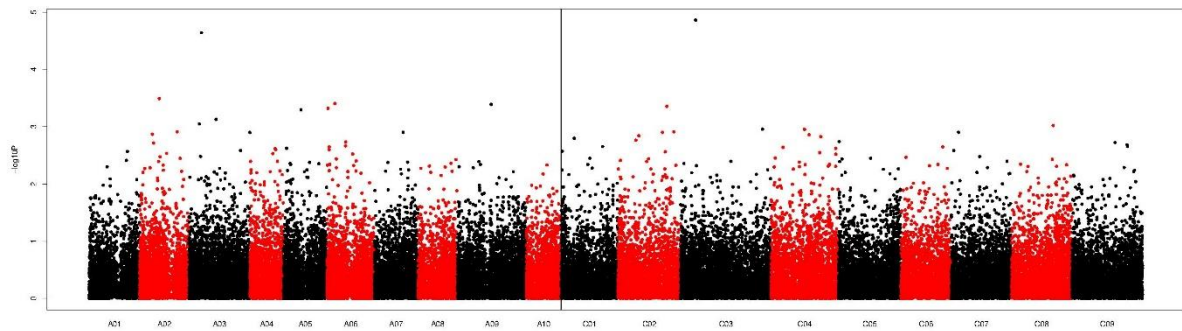
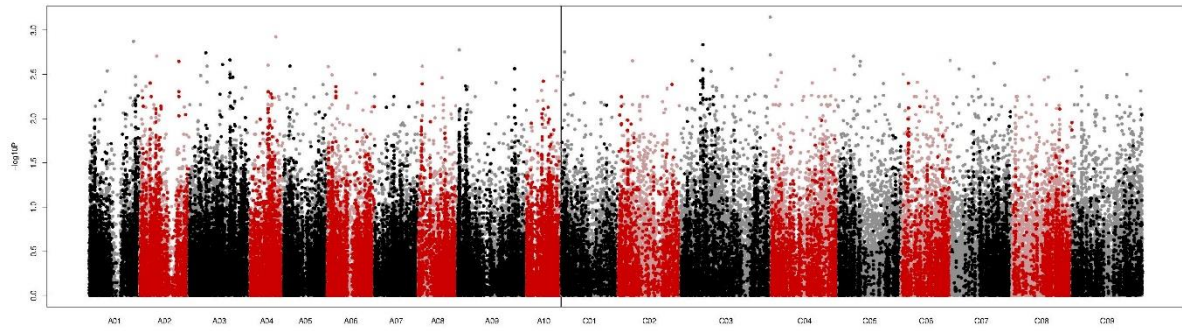
Stem Stiffness (1-9) at standard N, measured 30/05/2022, growth stage: 5.7-6.2



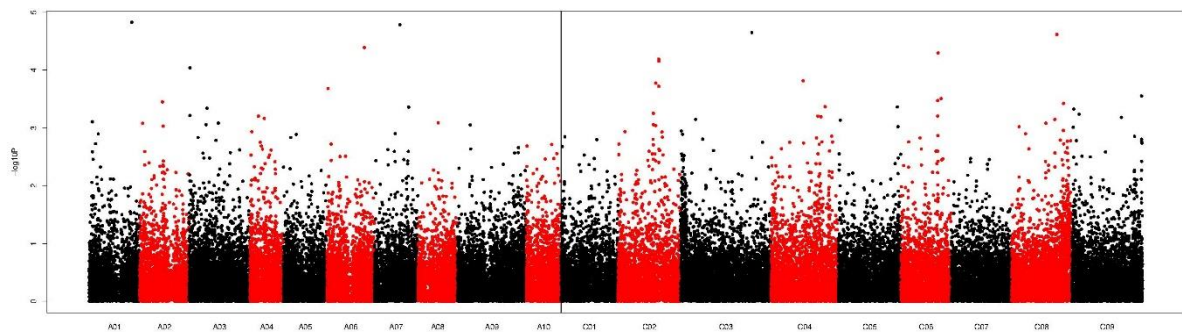
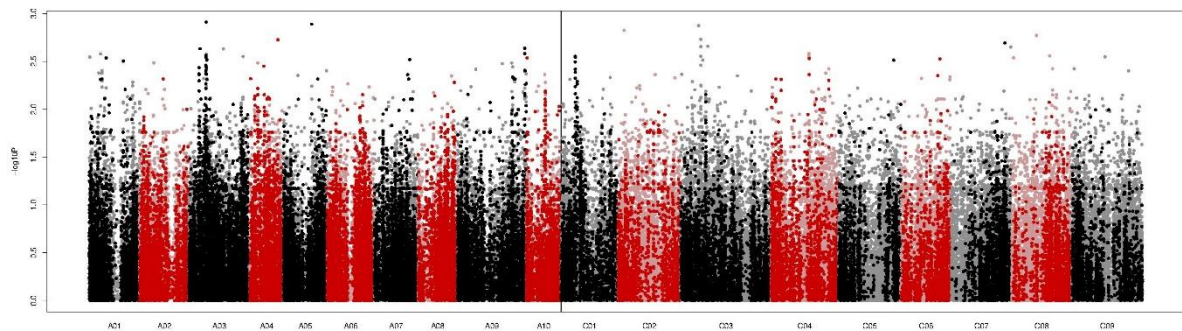
Maturity (1-9) at low N, measured 14/07/2022, growth stage: 9.1-9.6



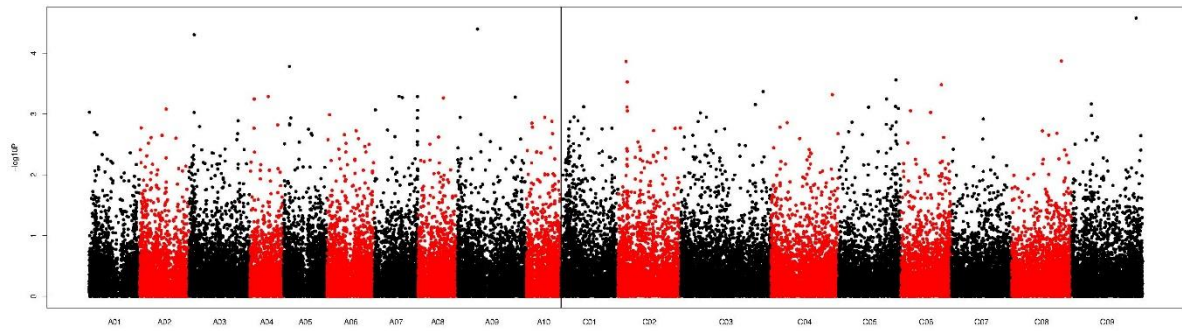
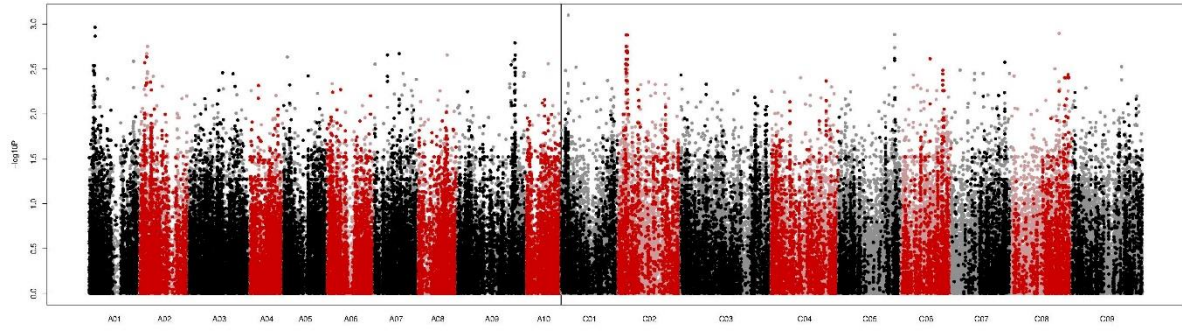
Maturity (1-9) at standard N, measured 14/07/2022, growth stage: 9.1-9.6



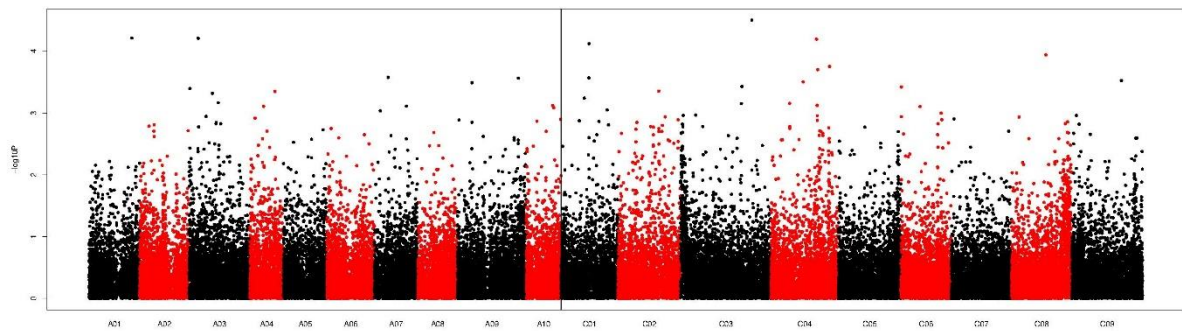
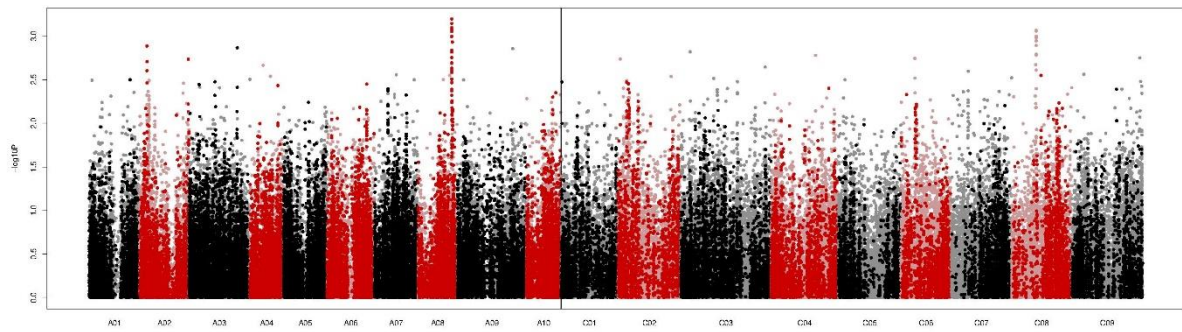
Fresh yield (kgs) at low N, measured 20/07/2022, growth stage: 9.9



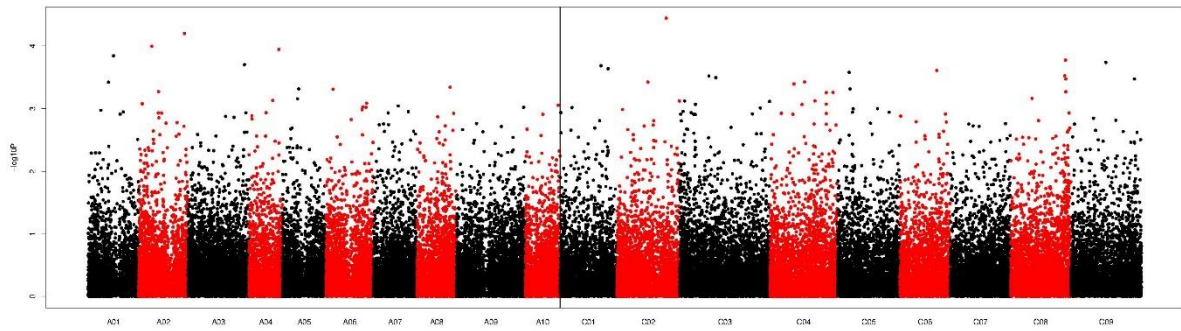
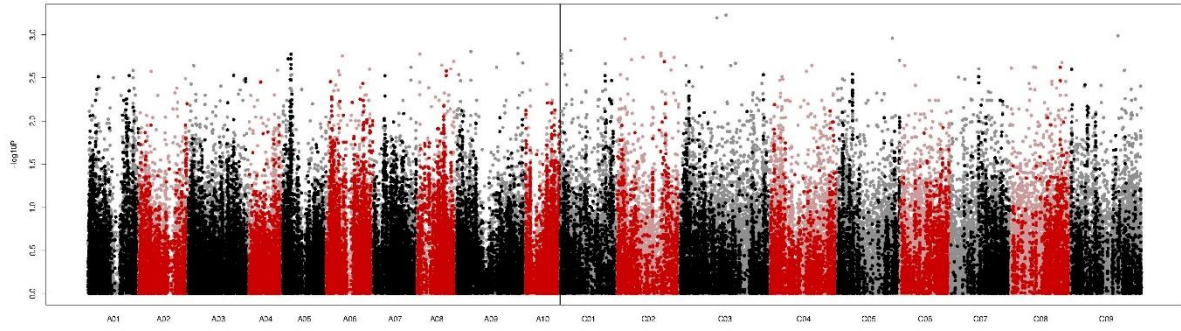
Moisture content% at standard N, measured 20/07/2022, growth stage: 9.9



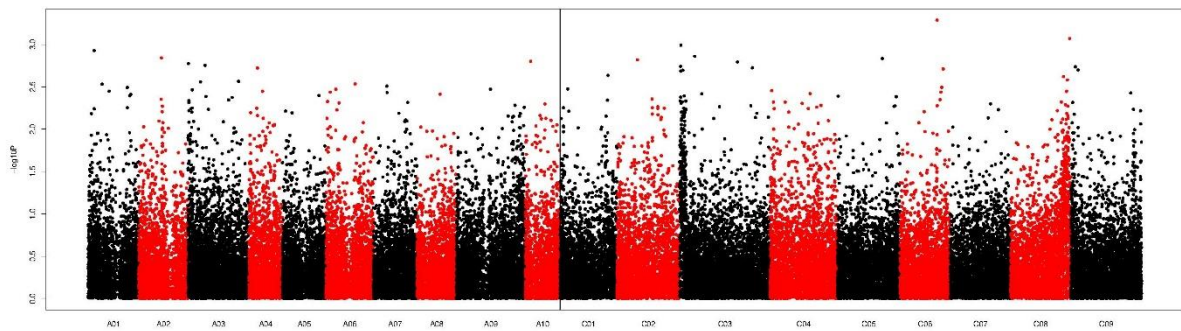
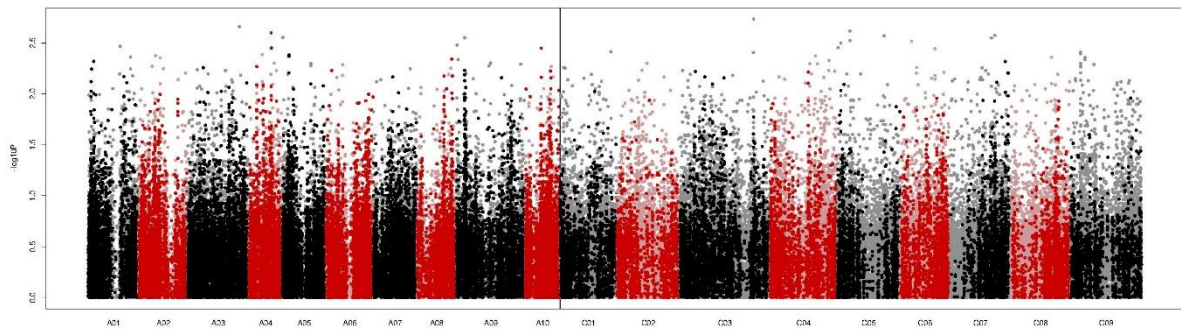
Fresh yield (kgs) at low N, measured 20/07/2022, growth stage: 10.9



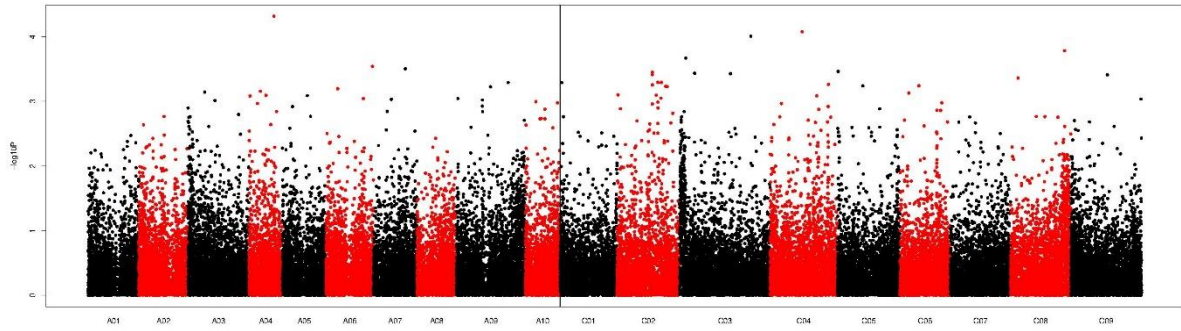
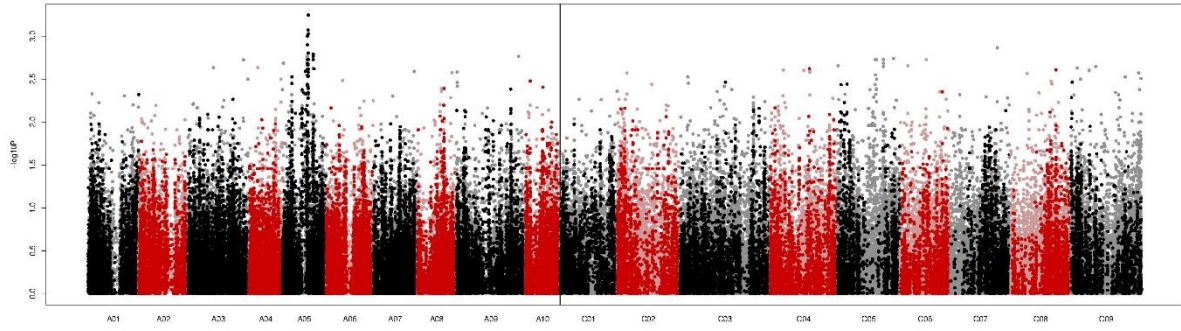
Moisture content% at standard N, measured 20/07/2022, growth stage: 9.10



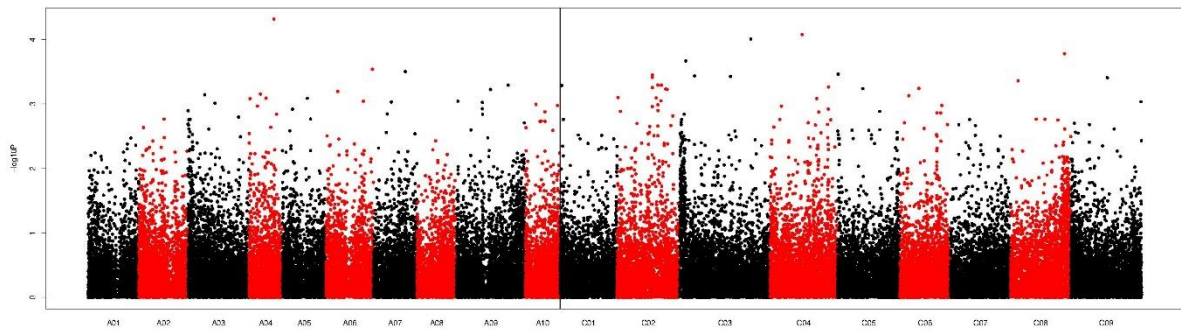
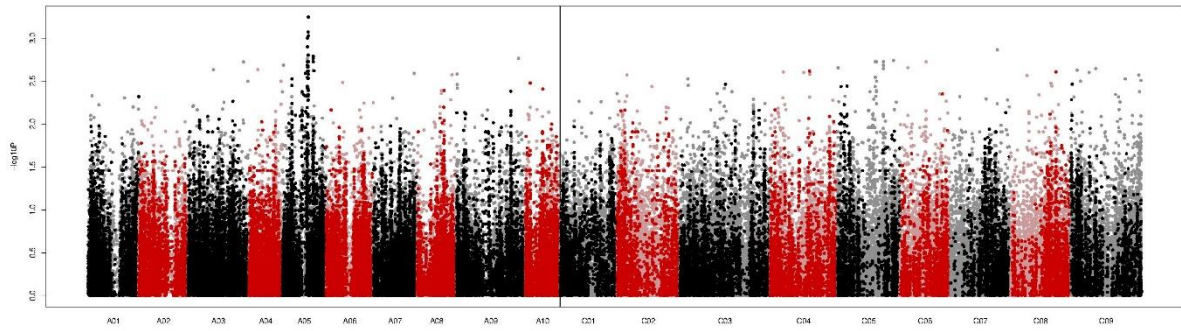
Dry Matter Content (%) at low N



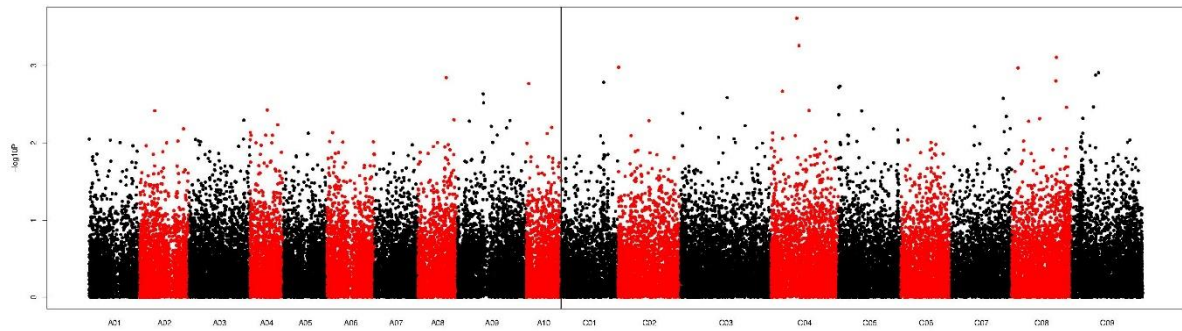
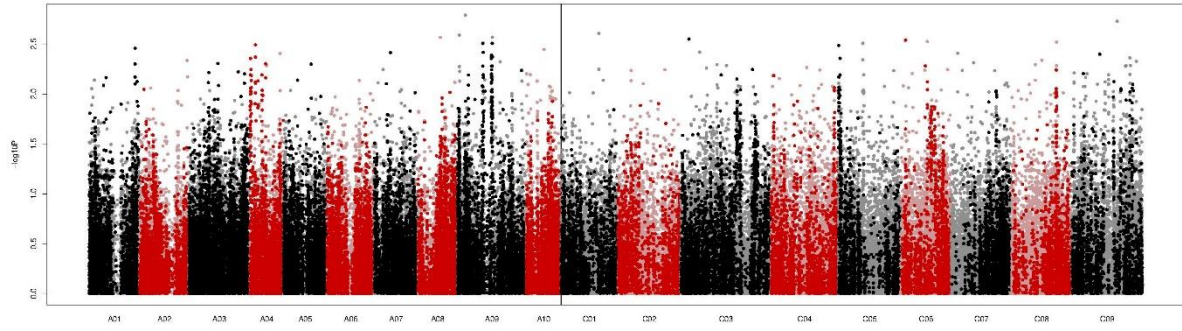
Oil Content (% at 9% moisture) Low N



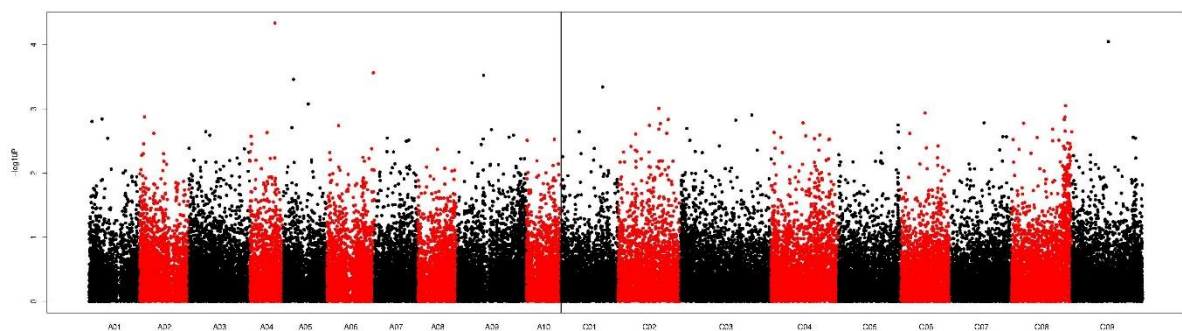
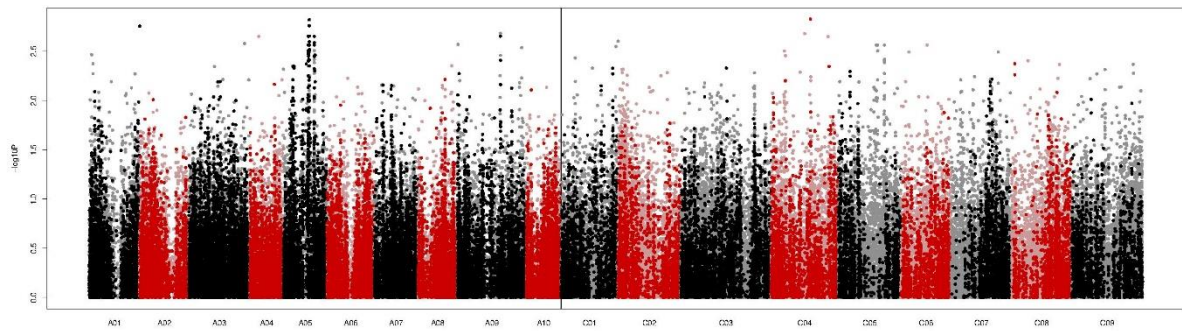
Oil Content (% dmb) Low N



Dry Matter Content (%) Std N



Oil Content (% , at 9% moisture) Std N



Oil Content (% , dmb) Std N

